



Isfahan Doekhie

+40 729 896 897

contact@blissimobiliare.ro
(mailto:contact@blissimobiliare.ro)

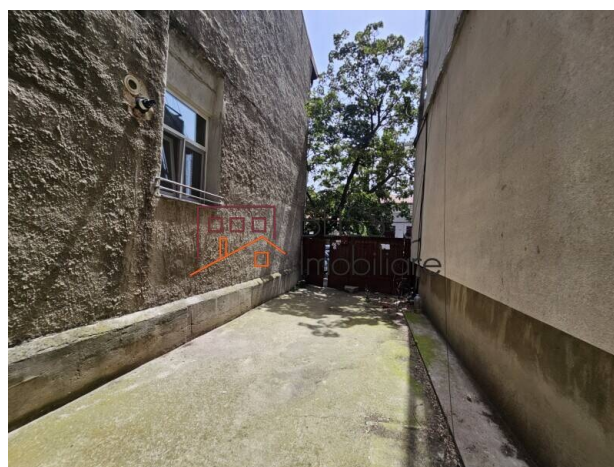
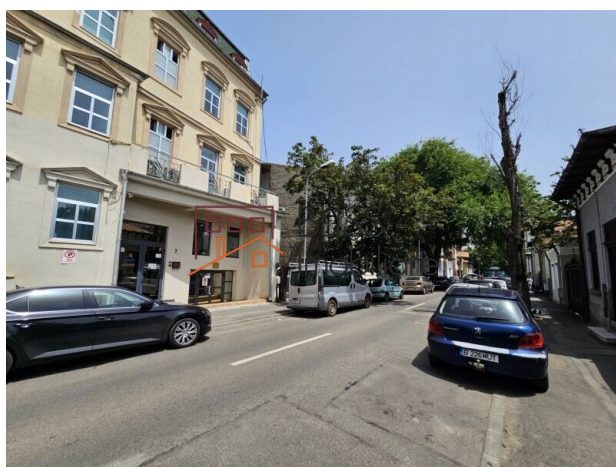
Updated on 14 October 2025

Prime RE Investment Opportunity in the Heart of Bucharest

Polona, Bucharest

850,000 EUR
804 EUR / m²

Web Reference
#906059



<https://www.blissimobiliare.ro/en/land-for-sale-km-0-ultracentral-bucharest-906059>
(<https://www.blissimobiliare.ro/en/land-for-sale-km-0-ultracentral-bucharest-906059>)

Description

Prime Investment Opportunity in the Heart of Bucharest

Secure Your High-End Project in a Premium Bucharest Neighborhood

Discover an unparalleled investment opportunity for boutique real estate development in the prestigious Polona area, Sector 2, Bucharest. This premium and bohemian neighborhood is highly sought after by young urban professionals, creatives, and those seeking a stylish pied-à-terre in the city. The demand for quality rental properties is consistently high, making this an ideal location for lucrative real estate ventures.

If you are looking for a secure investment and are interested in developing a boutique, high-end project, this property is perfect for you. With a total land surface of 1,057 sqm, this hidden gem offers the potential for significant profitability within a maximum of two years after purchase.


At BLISS Imobiliare, we provide comprehensive support throughout the entire process, including purchase, design, authorizations, building permits, construction, and the sale of your units or project. Our expertise ensures that you achieve high returns on your investment.


Seize this excellent opportunity to invest in one of Bucharest's most desirable areas and create a standout development that will attract premium buyers and renters alike.


Land details


Land type	Constructible land
Size	1,057 m²
Land usage coefficient	2
Percentage of occupation	50%
Config	P+2+1R max 13m
Street openings	
Road type	Asphalt
Protected area	Yes


Utilities

 Electricity

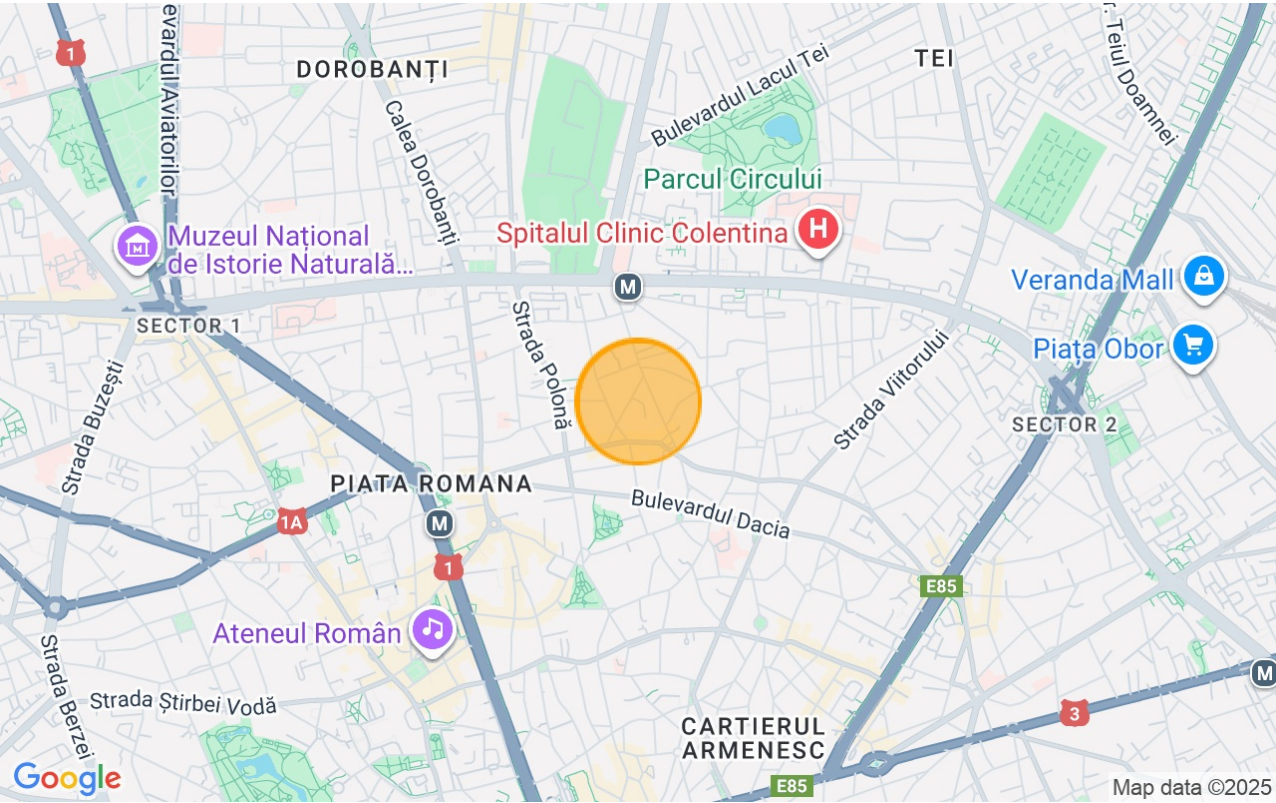
 Water

 Natural gas

 Sewage

 Telecom

Location



Photos

