



Violetta Tudorache

+40 729 005 624

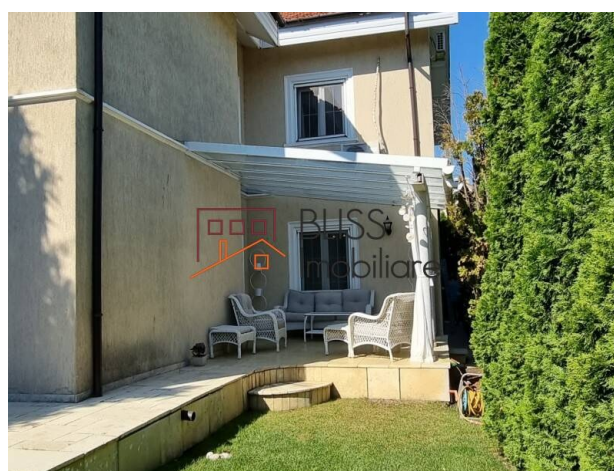
contact@blissimobiliare.ro
(mailto:contact@blissimobiliare.ro)

Updated on 2 April 2026

cozy 4 bedroom duplex villa with landscaped garden of 100 sqm

Web Reference
#98776

📍 Baneasa Residential Park (Butterfly), Iancu
Nicolae, Bucharest / Ilfov



<https://www.blissimobiliare.ro/en/house-4-bedrooms-for-rent-iancu-nicolae-pipera-bucharest-ilfov-98776> (<https://www.blissimobiliare.ro/en/house-4-bedrooms-for-rent-iancu-nicolae-pipera-bucharest-ilfov-98776>)

Description

Cozy 4 bedroom duplex villa, Gf+1F +At height regime, located in the popular Baneasa Residential Park complex. The villa has a generous surface of 250 sqm and the layout is efficient:

Excellent location, just 6 minutes walk from the British School.

- At the entrance we find a generous lobby, a guest toilet, a dressing room, technical room and laundry.
- The living room has a functional wood fireplace, a separate dining area and equipped kitchen.
- The living room has access to the semi-covered terrace where you can relax with a coffee. There is also a separate dining area for days with high temperatures.
- Upstairs there are 3 bedrooms, of which the master bedroom has its own bathroom, and the other two bedrooms share a bathroom in the hallway.
- The attic there is an area with a guest bedroom and a bathroom with sauna. There is also has an area where you can arrange a gym or an office.

The property offers a warm, cozy atmosphere, excellent for a family with children.

The beautiful garden with terrace has an area of approximately 100 square meters, offering privacy to residents due to the landscaped vegetation, becoming an oasis of peace and quiet.

The villa does not have parking, but there are numerous parking spaces near the property and in the immediate vicinity. Facilities include individual central heating system and air conditioning.

The Baneasa Residential Park complex is one of the most popular complexes in the Baneasa area. The complex has access to the Iancu Nicolae Street, as well as Bulevardul Pipera, being close to all international schools in the area.

Moreover, the complex offers 24/7 security, many playgrounds for children inside the complex. This is a very safe residential area, with many green spaces that encourage outdoor activities.

Very close to the complex you can find the largest shopping area in Bucharest - Baneasa Shopping City, Lycée Français Anna de Noailles, the American School, Mark Twain School, Olga Gudynn School and the newest Olga Gudynn campus in Oxford Gardens. Lots of restaurants and entertainment venues such as Cinema City, Zoo, Baneasa Forest, Edenland Adventure Park are located in the neighborhood,.


Property details

Rooms no.	6
Useable surface	250m ²
Constructed surface	300m ²
Bedrooms no.	4
Kitchens no.	1
Bathrooms no.	3
Toilets no.	1
Building type	House
Year built	2005
Year renovated	2018
Balconies no.	1
State	Finished
Total land	250m ²
Print	100m ²
Courtyard	100m ²
Common service charges	300.00 EUR

Amenities

 Equipped kitchen

 Dishwasher

 Furnished (Willing to take out)

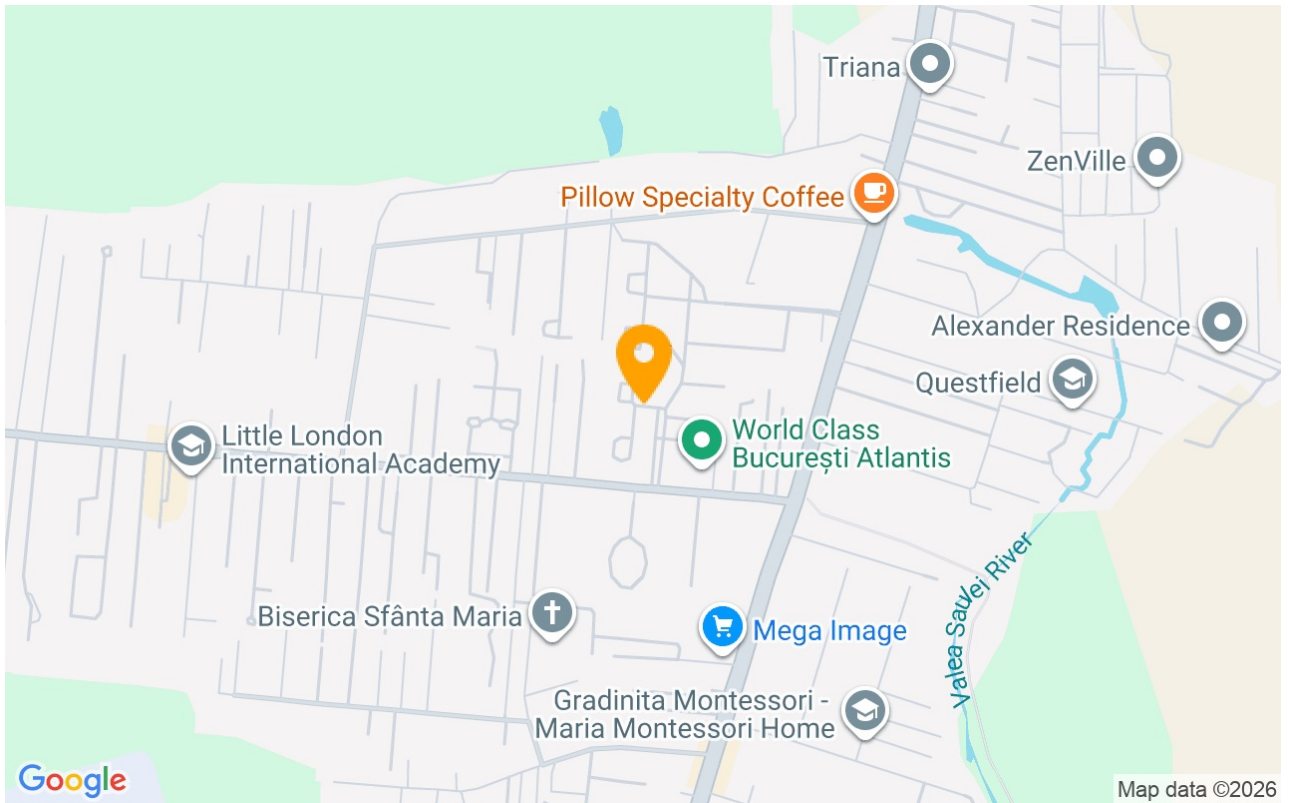
 Private heating

 Air conditioning

 Fireplace

 Sauna

Location



Photos

