

**Violetta Tudorache**

☎ +40 729 005 624

✉ contact@blissimobiliare.ro

(mailto:contact@blissimobiliare.ro)

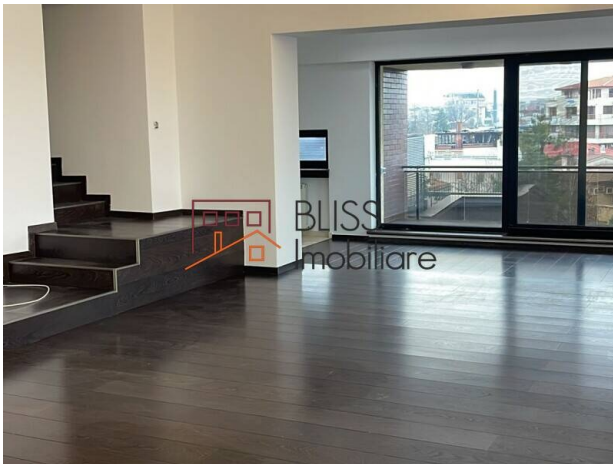
Updated on 14 December 2025

Premium 2-Bedroom Penthouse

📍 Primaverii, Bucharest

2,900 EUR/ month

Web Reference

#88765

<https://www.blissimobiliare.ro/en/apartment-duplex-2-bedrooms-for-rent-dorobanti-primaverii-kiseleff-aviatorilor-bucharest-88765> (<https://www.blissimobiliare.ro/en/apartment-duplex-2-bedrooms-for-rent-dorobanti-primaverii-kiseleff-aviatorilor-bucharest-88765>)

Description

Exclusive Duplex Penthouse in Primaverii - 240 sqm, Unfurnished, Fully Equipped Kitchen, Parking Included

Bright, airy spaces enhanced by natural light

Discover an exceptional duplex penthouse located in the prestigious Primaverii neighborhood — one of the most exclusive, secure and sought-after residential areas in Bucharest. Set on the 4th and 5th floors, this residence offers generous interior space, abundant natural light and a layout designed for comfort and elegance.

With a total built area of 240 sqm, the property is delivered unfurnished, allowing you to tailor every space to your personal style. The kitchen is fully equipped with premium appliances, and the apartment benefits from air conditioning, quality finishes and practical storage areas.

Key Features

- Duplex penthouse – 4th & 5th floor
- Fully equipped kitchen
- Bright living room with access to the balcony
- 2 spacious bedrooms
- 2 modern bathrooms
- Large windows ensuring excellent natural light

Building Features

- Lift
- Underground parking included
- Secure building with controlled access
- Quiet, private residential atmosphere

Location - Primaverii

Positioned in one of Bucharest's most exclusive residential districts, the penthouse offers immediate access to:





- Herastrau Park
- Primaverii Boulevard
- Aviatorilor
- Top restaurants, cafés, schools, diplomatic residences, business hubs

A rare opportunity to enjoy a premium lifestyle, privacy and prestige in one of the most desirable addresses in the city.

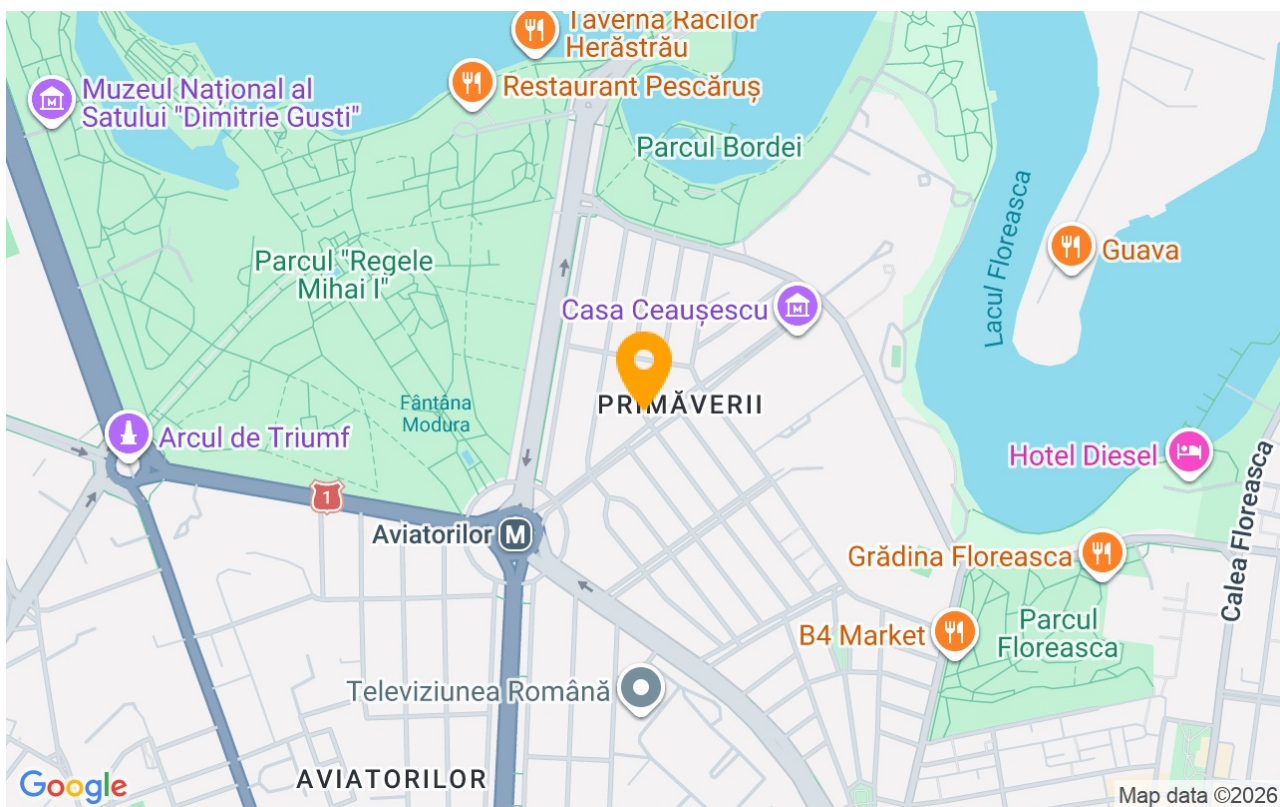
Property details

Rooms no.	3
Constructed surface	240m²
Apartment type	Duplex apartment
Type of rooms	Independent
Bedrooms no.	2
Kitchens no.	1
Bathrooms no.	2
Building type	Block
Year built	2012
Config	1S+P+5
Floor	4
Balconies no.	1
State	Finished
Elevator	Yes
Parking inside	1

Amenities

-  Equipped kitchen
-  Semi furnished
-  Suitable for office
-  Air conditioning

Location



Photos

