



Violetta Tudorache

+40 729 005 624

contact@blissimobiliare.ro
(mailto:contact@blissimobiliare.ro)

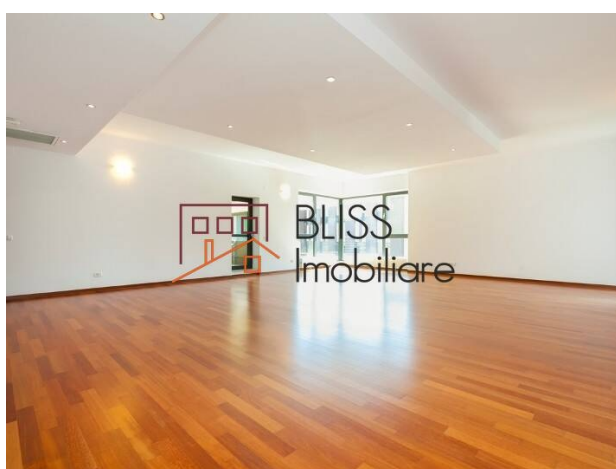
Updated on 22 April 2026

Spacious 3-Room Apartment with Large Terrace & Parking

2,590 EUR/ month

Web Reference
#86946

📍 Herastrau, Bucharest



<https://www.blissimobiliare.ro/en/apartment-3-bedrooms-for-rent-herastrau-nordului-bucharest-86946>
(<https://www.blissimobiliare.ro/en/apartment-3-bedrooms-for-rent-herastrau-nordului-bucharest-86946>)

Description

3-Bedroom Apartment in Herăstrău - 147 sqm, Open Plan, Large Terrace & Underground Parking

Boutique Building 100 Meters from Herăstrău Park Entrance

Boutique 4-storey building, 100 meters from Herăstrău Park entrance

We present an exceptional 3-bedroom apartment located on the 2nd floor of a boutique residential building with just 4 floors, in the Herăstrău - Nordului area. With a usable area of 147 sqm and a fully open-plan layout, the apartment stands out through a smart separation between the day and night zones, a generous terrace, a fully equipped kitchen and an included underground parking space.

The entrance to Herăstrău Park is just 100 meters away, Aurel Vlaicu metro station and Promenada Mall are a 10-minute walk, and a Mega Image supermarket is right around the corner - a truly privileged location for everyday living.

Layout & Interior Spaces

- Generous and bright living room with dining area

- 3 spacious bedrooms
- Fully equipped kitchen
- 2 modern bathrooms + 1 separate guest WC
- Large terrace
- 1 storage room

Amenities & Features

- Fully equipped kitchen
- Air conditioning
- Centralized building heating system
- Dishwasher

Building Facilities

- Boutique building - 1B+G+4F, constructed in 2005
- 1 underground parking space included
- 1 storage room
- Modern elevator
- Small, well-managed building

Location - Herăstrău | Nordului

An exceptional location with immediate access to:


- Herăstrău Park - entrance just 100 meters away
- Aurel Vlaicu metro station - 10-minute walk
- Promenada Mall - 10-minute walk
- Mega Image supermarket - right around the corner
- Aviației-Pipera business hub
- Restaurants, cafés, sports clubs and international schools


Ideal for families with children or for those who enjoy an active social life, while also appreciating the tranquility of a green and well-connected neighborhood.


Property details


| | |
|----------------------------|-------------------|
| Rooms no. | 4 |
| Useable surface | 147m ² |
| Constructed surface | 190m ² |
| Apartment type | Apartment |
| Type of rooms | Independent |
| Type of comfort | Comfort 1 |
| Bedrooms no. | 3 |
| Kitchens no. | 1 |
| Bathrooms no. | 2 |
| Toilets no. | 1 |
| Building type | Block |
| Year built | 2005 |
| Config | 1S+P+4 |
| Floor | 2 |
| Balconies no. | 1 |
| State | Finished |
| Elevator | Yes |
| Parking inside | 1 |
| Storage no. | 1 |

Amenities

 Equipped kitchen

 Dishwasher

 Not furnished (Willing to furnish)

 Building heating

 Air conditioning

Location



Photos

