



Violetta Tudorache

+40 729 005 624

contact@blissimobiliare.ro
(mailto:contact@blissimobiliare.ro)

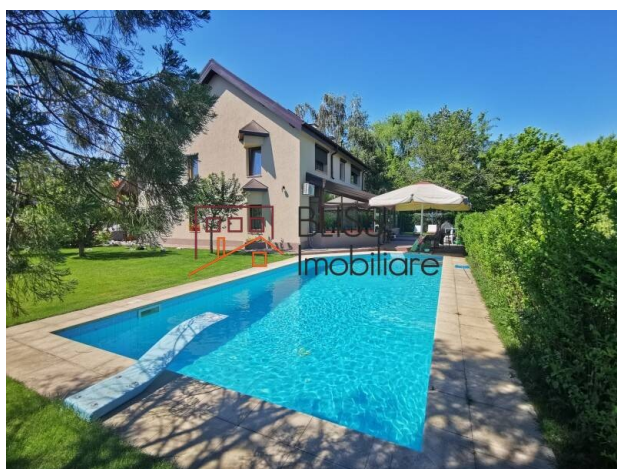
Updated on 31 October 2025

Superb 380sqm 6-bedroom villa on a plot of 1.000sqm with pool

1,100,000 EUR

Web Reference
#79889

Alfa Town (Impact), Iancu Nicolae British School Bucharest, Bucharest / Ilfov



<https://www.blissimobiliare.ro/en/villa-6-bedrooms-for-sale-iancu-nicolae-pipera-bucharest-ilfov-79889>
(<https://www.blissimobiliare.ro/en/villa-6-bedrooms-for-sale-iancu-nicolae-pipera-bucharest-ilfov-79889>)

Description

Superb and spacious 6-bedroom villa located in the Alfa Town Residential Complex, on Erou Iancu Nicolae, Pipera.

Villa with lots of green space close to international schools

This wonderful house is surrounded by many trees and greenery, giving it privacy, and consists of 6 bedrooms, a gorgeous living room, an equipped kitchen (including dishwasher) and 4 bathrooms.

The house benefits from a built area of 380 square meters, of which a usable area of 300 square meters. Its height regime is Gf+1+At and is divided as follows:

- Ground floor: living room with high ceiling, spacious fully furnished kitchen, office/bedroom, bathroom;
- Floor: 3 bedrooms, one of which has its own bathroom, a bathroom in the hallway;
- Attic: 2 bedrooms, 1 bathroom.

The house was built in 2000 and renovated in 2019, being positioned on a plot of land with a total area of 1,000 sqm.

The villa is unfurnished, but has an individual heating system, air conditioning and high-quality facilities such as: swimming pool, sauna and a superb 800 sqm garden, where you can relax with family and friends.

The property has a technical room, a garage for 2 cars and another 2 parking spaces outside.

The Alfa Residential Complex is located on Iancu Nicolae Street, at the intersection of Pipera Tunari Road and Erou Iancu Nicolae Road.

The construction of the complex was started in 1995 and completed in 2001. It includes 40 luxury villas, with a height regime of Gf+1, Gf+1+At, with its own garage and yard and permanent security.

Alfa was one of the first real estate projects built in Pipera by the company Impact.

The area is served by numerous facilities and services, with quick access to the Băneasa commercial area.


The villas in the complex are connected to the public sewage system, potable water, electricity and gas, cable TV, fixed telephone and internet.


Property details


Rooms no.	7
Useable surface	313m²
Constructed surface	408m²
Bedrooms no.	6
Kitchens no.	1
Bathrooms no.	4
Building type	Villa
Year built	2000
Year renovated	2019
Balconies no.	1
State	Finished
Total land	1000m²
Print	150m²
Courtyard	800m²
Parking inside	2
Parking outside	2
Storage no.	1

Amenities


 Equipped kitchen

 Private heating

 Swimming pool

 Dishwasher

 Air conditioning

 Not furnished

 Sauna

Location



Photos

