

**Violetta Tudorache**

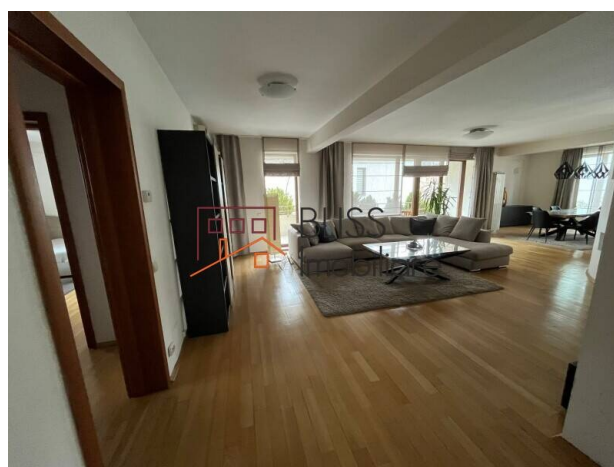
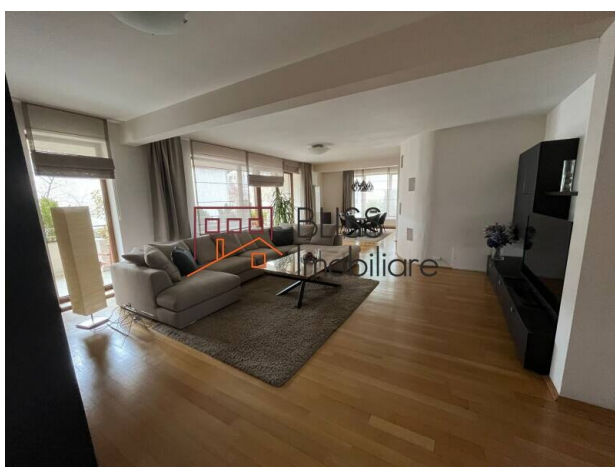
☎ +40 729 005 624

✉ contact@blissimobiliare.ro
(mailto:contact@blissimobiliare.ro)

Updated on 26 January 2026

3-Bedroom Spacious Apartment- Herăstrău Area

📍 Herastrau, Bucharest

2,900 EUR/ monthWeb Reference
#7923

<https://www.blissimobiliare.ro/en/apartment-3-bedrooms-for-rent-herastrau-nordului-bucharest-7923>
(<https://www.blissimobiliare.ro/en/apartment-3-bedrooms-for-rent-herastrau-nordului-bucharest-7923>)

Description

3-Bedroom Apartment, 200 sqm + 2 Balconies, 2 Parking Spaces - Herăstrău Area

Exclusive living near Herăstrău Park

BLISS Imobiliare presents a spacious 3-bedroom apartment, located on the 1st floor of an exclusive boutique building with only 3 floors, completed in 2005, in one of the most prestigious residential areas of Bucharest - Herăstrău. With a usable area of 200 sqm (240 sqm built), this property impresses through its generous layout, natural light and high-quality finishes.

Layout and Features

- Bright and spacious living room, perfect for relaxation or open-space office setup
- 3 comfortable bedrooms, well-proportioned
- Closed kitchen, fully furnished and equipped
- 2 elegant bathrooms with modern finishes
- 2 balconies with open view
- Fully furnished and equipped with quality furniture and appliances
- Individual heating system and air conditioning in all rooms
- 2 outdoor parking spaces included

Premium Location - Herăstrău / Nordului






Located in a refined and exclusive residential neighborhood, the apartment offers quick access to:

- Herăstrău Park – ideal for walks, sports and leisure
- Renowned restaurants and cafés, social and leisure clubs
- Promenada Mall, Romexpo, Piața Domenii and Floreasca – shopping & entertainment
- Top international schools and kindergartens, private clinics, fitness and sports clubs
- Public transport – bus, tram and Aurel Vlaicu metro station (approx. 15 min walk)

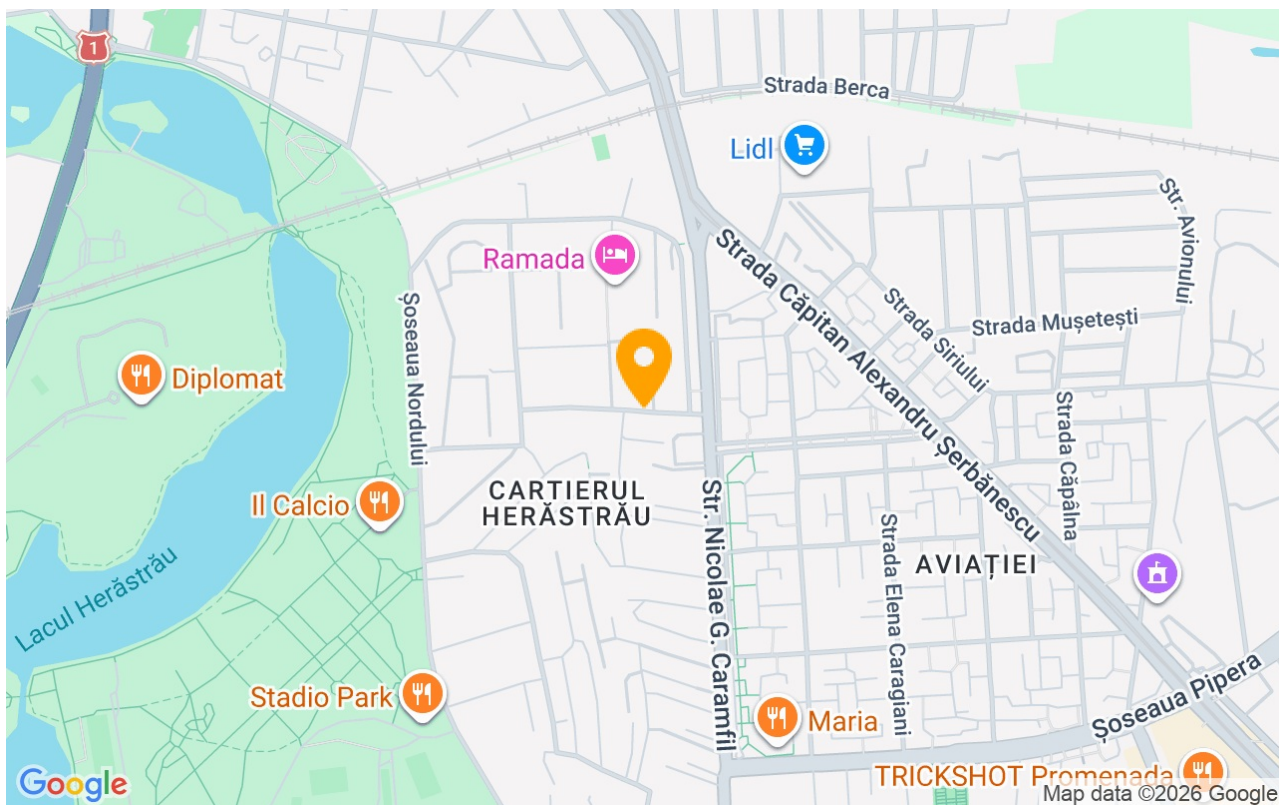
Property details

Rooms no.	4
Useable surface	200m²
Constructed surface	240m²
Apartment type	Apartment
Type of rooms	Semi-independent
Type of comfort	Comfort 1
Bedrooms no.	3
Kitchens no.	1
Bathrooms no.	2
Building type	Block
Year built	2005
Config	P+3
Floor	1
Balconies no.	2
State	Finished
Elevator	Yes
Parking outside	2
Earthquake risk class	Unclassified

Amenities

-  Equipped kitchen
-  Dishwasher
-  Furnished
-  Private heating
-  Air conditioning

Location



Photos

