



Violetta Tudorache

+40 729 005 624

contact@blissimobiliare.ro
(mailto:contact@blissimobiliare.ro)

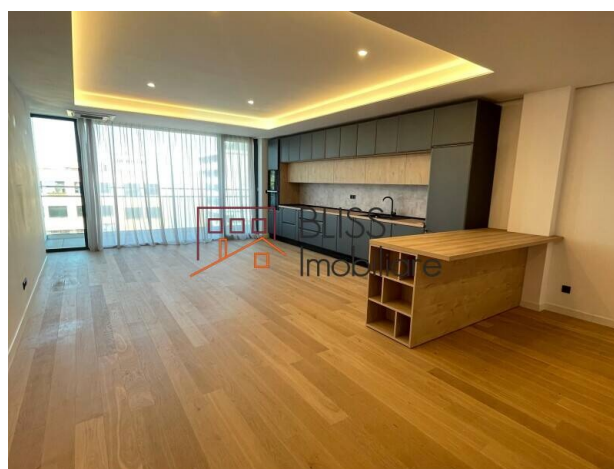
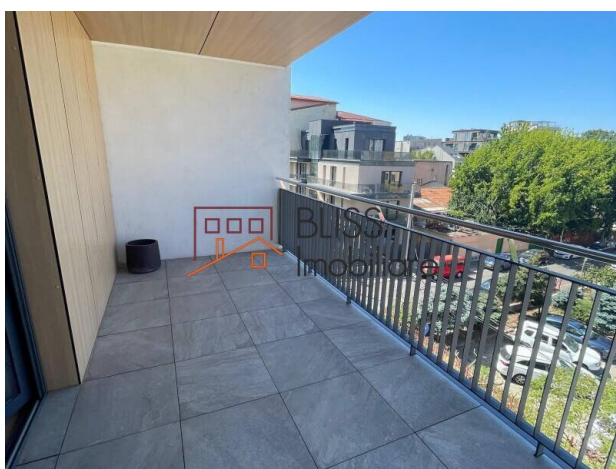
Updated on 3 October 2025

2-Bedroom Luxury Apartment in Floreasca

2,200 EUR/ month

Web Reference
#64637

📍 Rahmaninov 38, Floreasca, Bucharest



<https://www.blissimobiliare.ro/en/apartment-2-bedrooms-for-rent-floreasca-barbu-vacarescu-bucharest-64637> (<https://www.blissimobiliare.ro/en/apartment-2-bedrooms-for-rent-floreasca-barbu-vacarescu-bucharest-64637>)

Description

2-Bedroom Apartment in Floreasca - 135 sqm + 22 sqm Terraces, Premium Finishes

Spacious interiors and bright terraces in Floreasca's exclusive area

Discover urban refinement in this spectacular 2-bedroom apartment, located in an exclusive residential complex in Floreasca – one of the most sought-after neighborhoods in Bucharest. With 135 sqm of interior space and 22 sqm of terraces, this property stands out through its modern architecture, smart layout, and attention to detail.

Generous Space and Modern Design

- Spacious and bright living area, with large windows offering open views and abundant natural light
- Kitchen fully furnished and equipped with premium appliances
- Master bedroom with en-suite bathroom and direct terrace access
- Second comfortable bedroom, ideal for family or home office
- 2 modern bathrooms + guest toilet, finished with high-quality materials
- 22 sqm of terraces

Premium Features

- Elegant and contemporary finishes
- Individual central heating system and air conditioning
- Large glazed surfaces for comfort and natural light
- 1 underground parking space included

Prime Location - Floreasca

The apartment is part of a boutique residential complex where modern architecture meets the tranquility and sophistication of the Floreasca area. You'll be just steps away from:

- Floreasca Park and Floreasca Lake
- Fine dining restaurants, chic cafés, and wine bars
- Promenada Mall and the Barbu Văcărescu – Pipera business district
- International schools, private clinics, and wellness centers

This apartment is the perfect choice for those seeking a sophisticated lifestyle in one of Bucharest's most exclusive locations.

Property details

Rooms no.	3
Useable surface	135m²
Constructed surface	157m²
Apartment type	Apartment
Type of rooms	Independent
Type of comfort	Comfort 1
Bedrooms no.	2
Kitchens no.	1
Bathrooms no.	2
Toilets no.	1
Building type	Block
Year built	2021
Config	1S+P+8
Floor	2
Balconies no.	2
State	Finished
Elevator	Yes
Parking inside	1
From developer	Yes

Amenities



Equipped kitchen



Dishwasher



Not furnished



Building heating

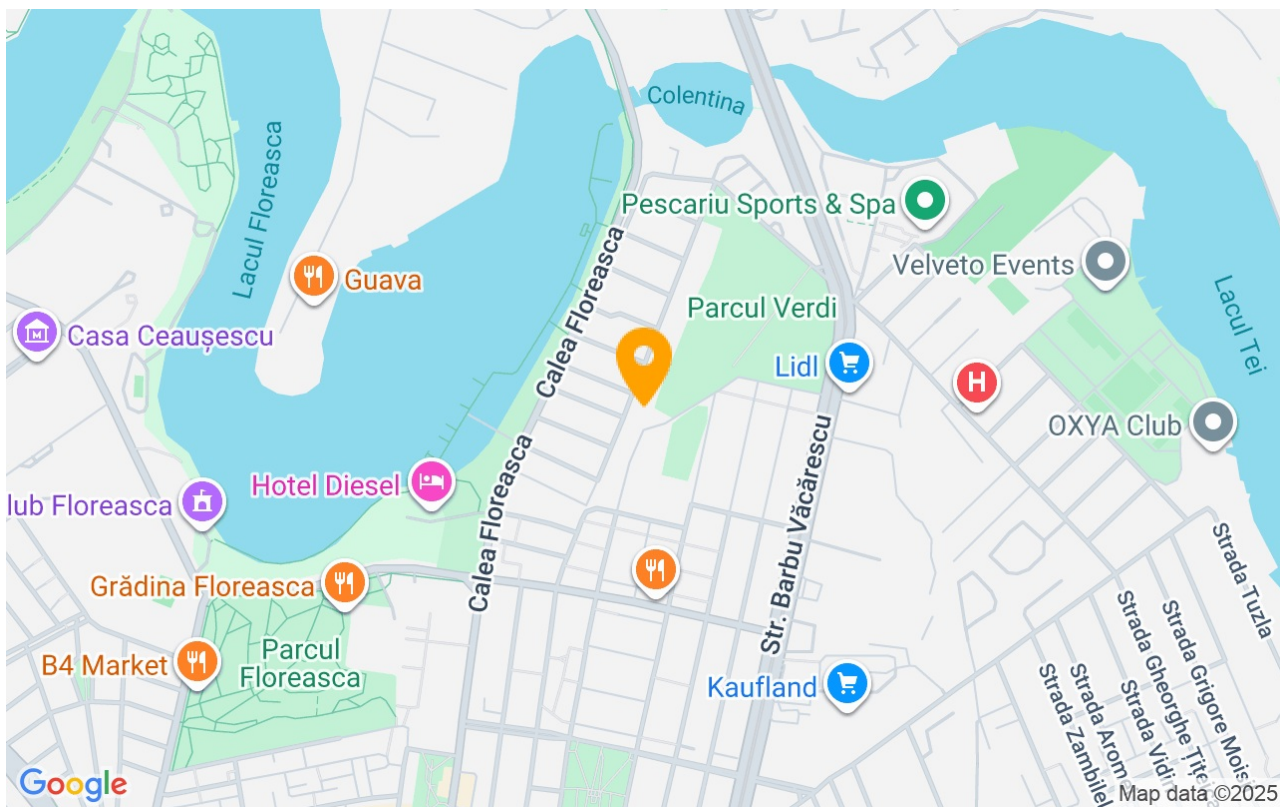


Suitable for office



Air conditioning

Location



Photos

