



Violetta Tudorache

+40 729 005 624

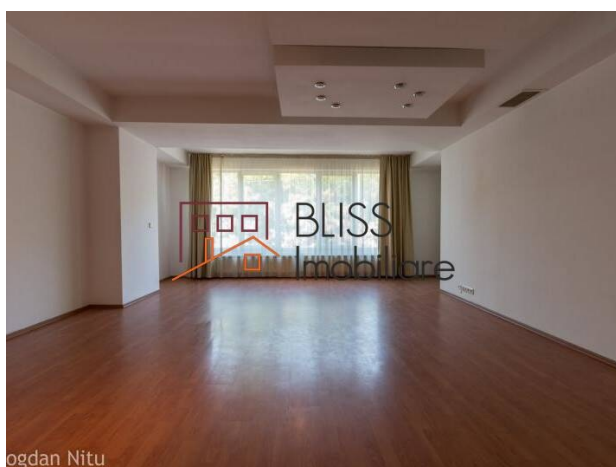
contact@blissimobiliare.ro
(mailto:contact@blissimobiliare.ro)

Updated on 11 June 2025

Luxury Apartment with Herăstrău Park View

📍 Nordului, Bucharest

Web Reference
#6105



<https://www.blissimobiliare.ro/en/apartment-2-bedrooms-for-rent-herastrau-nordului-bucharest-6105>
(<https://www.blissimobiliare.ro/en/apartment-2-bedrooms-for-rent-herastrau-nordului-bucharest-6105>)

Description

Luxury Apartment on Șoseaua Nordului - **Elegance, Comfort & Stunning Herăstrău Park Views**

Complete Facilities for Your Comfort

If you dream of an exclusive lifestyle, surrounded by nature, with breathtaking views over Herăstrău Park, this apartment is the perfect choice. Located at Șoseaua Nordului 110, directly facing the park, this home invites you to enjoy tranquility, comfort, and sophistication. It's the ideal place for those who appreciate quality living, proximity to green spaces, and the best restaurants and cafés in town.

A Bright, Warm & Welcoming Home:

- **Total usable area:** 120 sqm – spacious and thoughtfully designed for comfort
- **Open terrace with direct park views** – enjoy peaceful mornings and breathtaking sunsets
- **Spacious and inviting living room** – perfect for unwinding after a long day
- **Fully furnished and equipped kitchen** – ideal for family dinners or entertaining friends
- **Two elegant and modern bathrooms** – featuring high-quality finishes

A Premium Location for an Active & Sophisticated Lifestyle

- Șoseaua Nordului – one of the most exclusive areas in Bucharest
- Herăstrău Park at your doorstep – for morning strolls, relaxing walks, and outdoor workouts
- Fine dining restaurants & stylish cafés – perfect for elegant outings and social gatherings

- Gyms & wellness centers nearby – to maintain an active and healthy lifestyle
- Quick access to business districts and shopping centers

Premium Amenities for Maximum Comfort

- Underground parking space – your car will always be safe
- Storage unit – extra space for your personal belongings
- Easy access to public transport – for seamless city connectivity

The Perfect Choice for a Balanced & Elegant Lifestyle




This apartment is ideal for professionals, expats, or families looking for a sophisticated home in a peaceful yet central location.

Contact me for more details or to schedule a viewing!

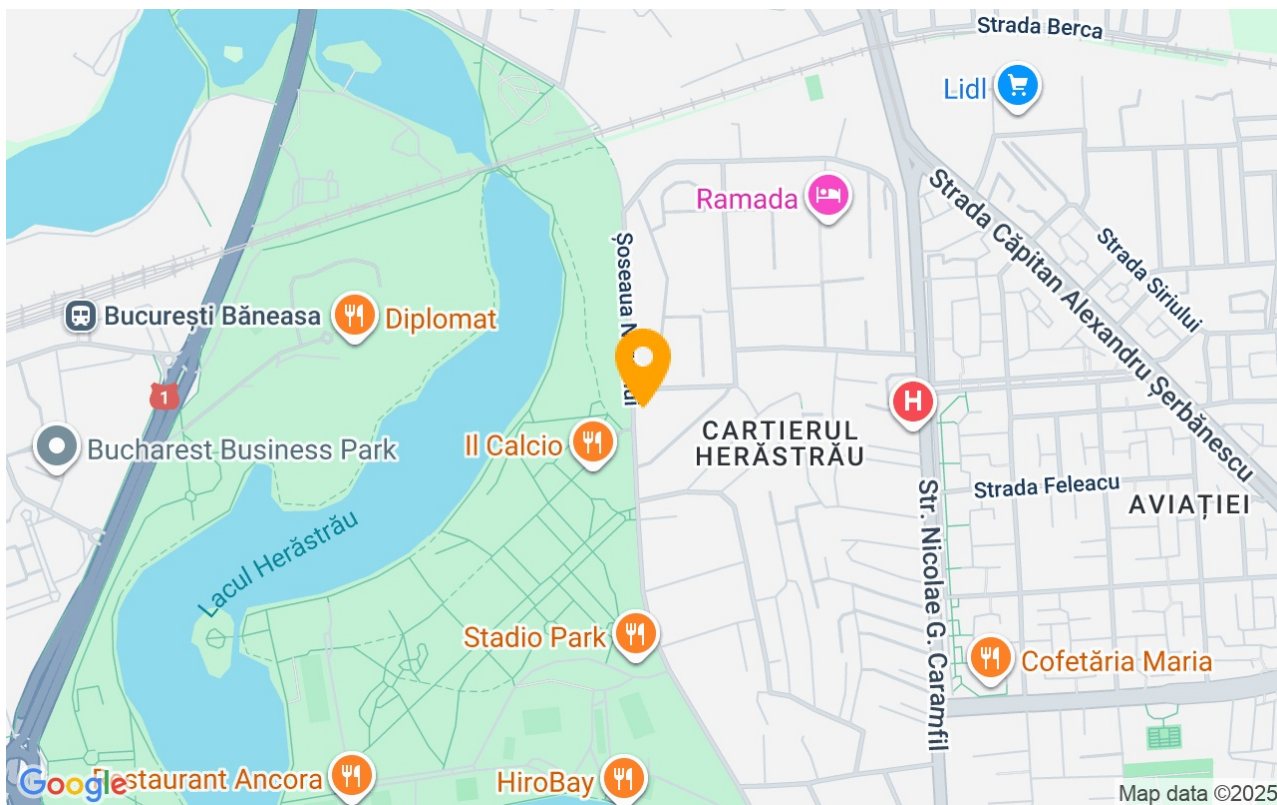
Property details

| | |
|---------------------|-------------|
| Rooms no. | 3 |
| Useable surface | 108m² |
| Constructed surface | 119m² |
| Apartment type | Apartment |
| Type of rooms | Independent |
| Type of comfort | Deluxe |
| Bedrooms no. | 2 |
| Kitchens no. | 1 |
| Bathrooms no. | 2 |
| Building type | Block |
| Year built | 2004 |
| Config | 1S+P+5 |
| Floor | 1 |
| Balconies no. | 1 |
| State | Finished |
| Elevator | Yes |
| Parking inside | 1 |
| Storage no. | 1 |

Amenities

-  Equipped kitchen
-  Semi furnished
-  Private heating

Location



Photos

