



**Violetta Tudorache**

+40 729 005 624

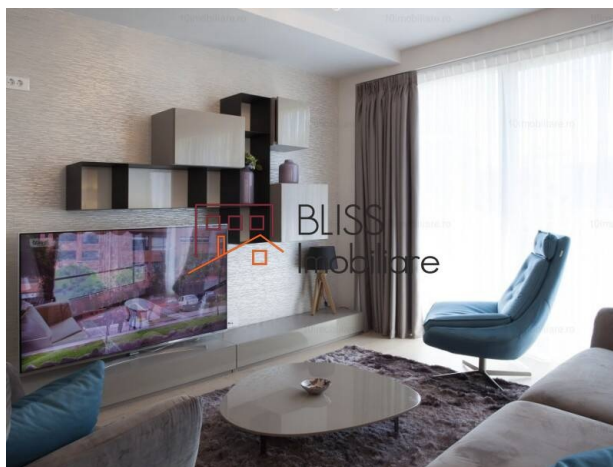
contact@blissimobiliare.ro  
(mailto:contact@blissimobiliare.ro)

Updated on 16 March 2019

## 2 bedroom apartment

Eclipse Residence, Dorobanti Capitale,  
Bucharest

Web Reference  
**#58369**



<https://www.blissimobiliare.ro/en/apartment-2-bedrooms-for-rent-dorobanti-primaverii-kiseleff-aviatorilor-bucharest-58369> (<https://www.blissimobiliare.ro/en/apartment-2-bedrooms-for-rent-dorobanti-primaverii-kiseleff-aviatorilor-bucharest-58369>)

### Description

Superb apartment 136 sqm (108 useful) in the Dorobanti Capitale area.

Located on the 3rd floor and with extremely generous windows the apartment is very bright and offers a great view.

It has 2 bedrooms, 42 sqm living room, 3 bathrooms with a shower and separate bathtub in the master bedroom and a terrace of 9 sqm.

The apartment is fully furnished and equipped to the last detail. Everything is absolutely new.

Comfortable living with a smart-house system with lighting scenarios and temperature control over the Internet or from the central control panel.

The apartment benefits from 2 underground parking spaces. The elevator offers direct access in the apartment.






Live a high end live in a high end apartment in a high end area!



Property details

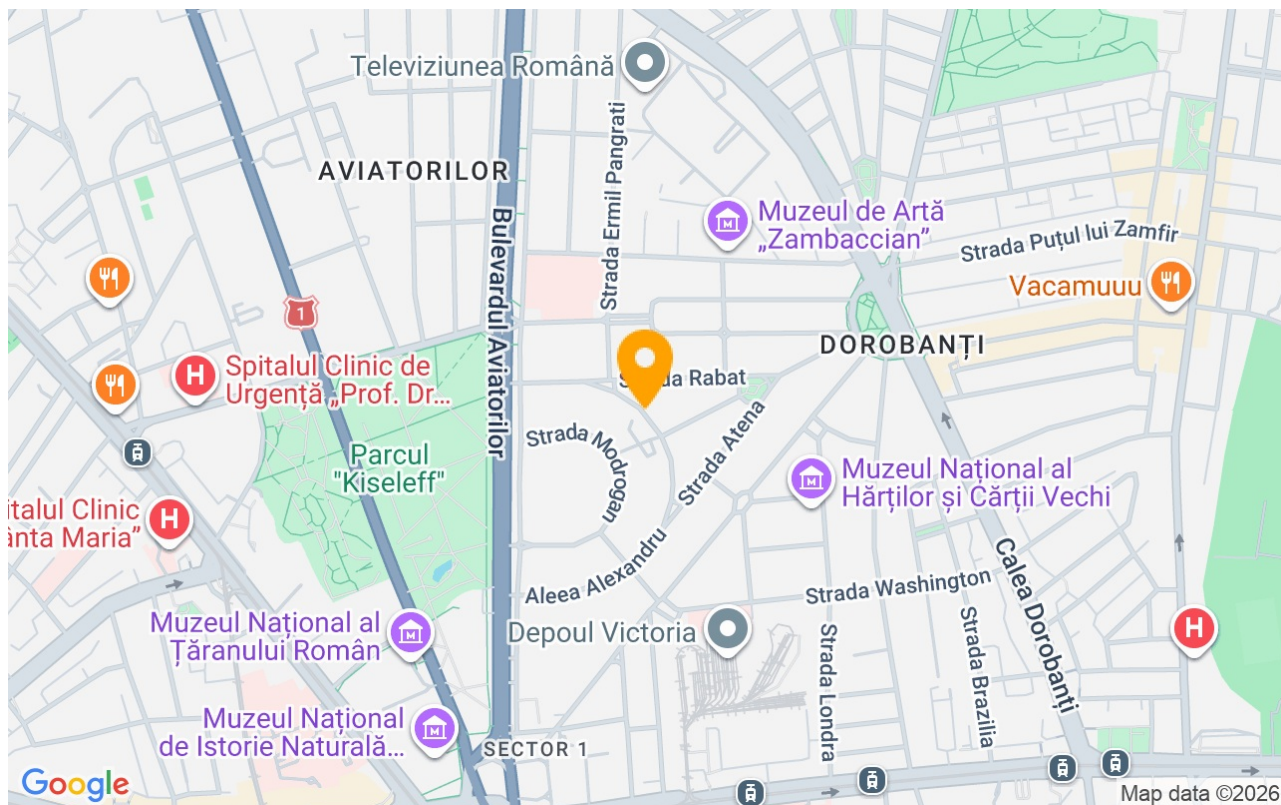
Rooms no.	3
Useable surface	108m²
Constructed surface	136m²
Apartment type	Apartment
Type of rooms	Independent
Type of comfort	Deluxe
Bedrooms no.	2
Kitchens no.	1
Bathrooms no.	3
Building type	Block
Year built	2016
Config	1S+P+4
Floor	3
Balconies no.	1
State	Finished
Elevator	Yes
Parking inside	2
Common service charges	300.00 EUR

Amenities

-  Equipped kitchen
-  Dishwasher
-  Furnished
-  Private heating
-  Air conditioning



## Location



## Photos

