



Violetta Tudorache

+40 729 005 624

contact@blissimobiliare.ro
(mailto:contact@blissimobiliare.ro)

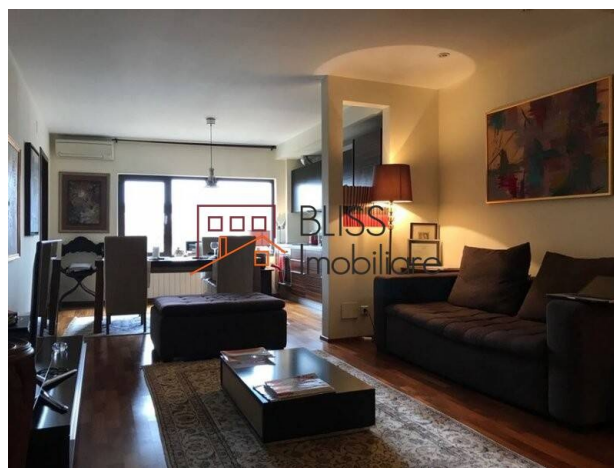
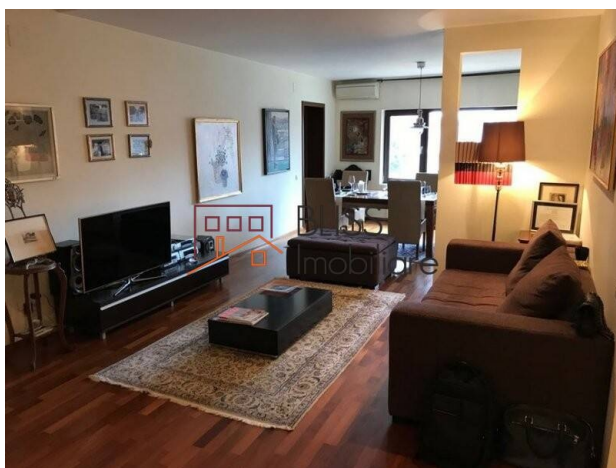
Updated on 23 July 2025

2-Bedroom Apartment in Herăstrău Area - Parking Included

Nordului, Bucharest

1,250 EUR/ month

Web Reference
#49468



<https://www.blissimobiliare.ro/en/apartment-2-bedrooms-for-rent-herastrau-nordului-bucharest-49468>
(<https://www.blissimobiliare.ro/en/apartment-2-bedrooms-for-rent-herastrau-nordului-bucharest-49468>)

Description

2-Bedroom Apartment in Herăstrău Area - 105 sqm Usable, Premium Finishes, Underground Parking

Exclusive Community, Secured Access & Refined Comfort

Located in one of Bucharest's most exclusive residential areas, just behind Șoseaua Nordului, this elegant 2-bedroom apartment offers privacy, tranquility, and quick access to Herăstrău Park. Positioned on the 2nd floor of a low-rise boutique building (P+3), the apartment stands out through its generous layout, high-end finishes, and refined neighborhood atmosphere.

Layout and Premium Features:

- 105 sqm usable area, efficiently divided
- Spacious living room, modernly decorated, with integrated dining area
- Two large bedrooms, tastefully furnished
- Two elegant bathrooms with premium finishes
- Kitchen fully furnished and equipped
- Fully furnished and decorated in contemporary style
- High-quality finishes, air conditioning, included appliances

- Underground parking space included

Building Features:

- Landmark building with low height regime (P+3)
- Concierge service and 24/7 security with controlled access
- Located in a diplomatic residential area with additional surveillance
- Well-maintained and spacious common areas





Excellent Location - Herăstrău / Șoseaua Nordului Area

- Immediate access to Herăstrău Park and nearby leisure facilities
- Close to upscale restaurants, cafés, and Promenada Mall
- Easy connections to Aurel Vlaicu metro station and DN1 – Otopeni Airport

Property details

Rooms no.	3
Useable surface	105m²
Apartment type	Apartment
Type of rooms	Independent
Type of comfort	Deluxe
Bedrooms no.	2
Kitchens no.	1
Bathrooms no.	2
Building type	Block
Year built	2016
Config	1S+P+4
Floor	2
State	Finished
Elevator	Yes
Parking inside	1

Amenities

-  Equipped kitchen
-  Furnished
-  Private heating
-  Air conditioning

Location



Photos

