



**Violetta Tudorache**

+40 729 005 624

contact@blissimobiliare.ro  
(mailto:contact@blissimobiliare.ro)

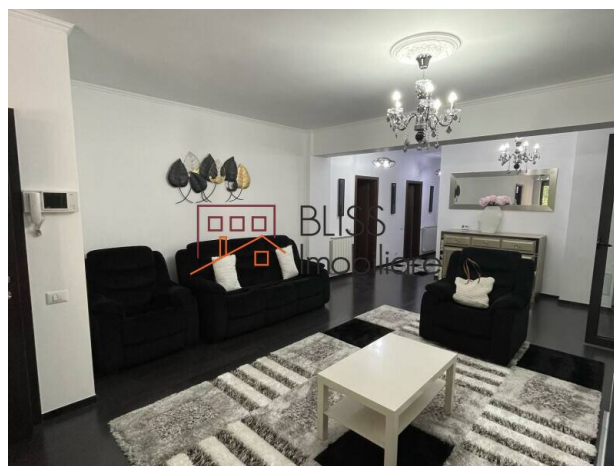
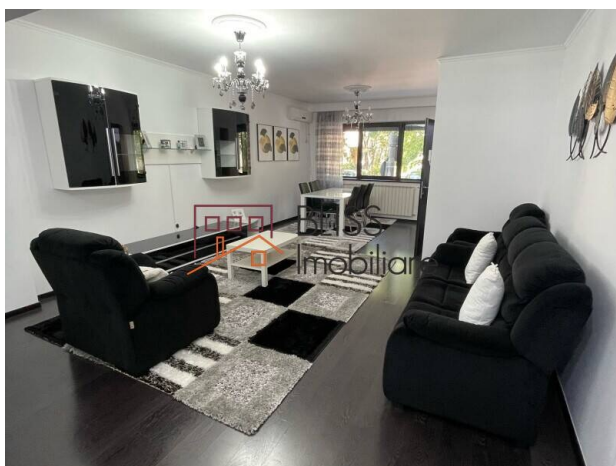
Updated on 27 January 2026

## Luxury 3-Bedroom Apartment with Private Garden - Herăstrău / Aviației

**2,500 EUR/ month**

Web Reference  
**#45118**

Aviației, Bucharest



<https://www.blissimobiliare.ro/en/apartment-3-bedrooms-for-rent-aviatiei-promenada-mall-metro-pipera-bucharest-45118> (<https://www.blissimobiliare.ro/en/apartment-3-bedrooms-for-rent-aviatiei-promenada-mall-metro-pipera-bucharest-45118>)

### Description

**Luxury 3-Bedroom Apartment with 70 sqm Private Garden - Herăstrău / Aviației Area**

## Near Herăstrău Park, Promenada Mall & Aurel Vlaicu Metro

Experience refined urban living in this spacious 3-bedroom apartment, located in a newly built residential building in one of the most desirable areas in northern Bucharest – just steps away from Herăstrău Park, Promenada Mall, and Aurel Vlaicu metro station.

With a **usable area of 140 sqm and a private garden of 70 sqm**, this exceptional property offers generous space, abundant natural light, and privacy – all in an elegant and highly functional layout.

### Layout and Premium Features:

- Expansive living room with dedicated dining area
- 3 bright, well-proportioned bedrooms
- Separate dressing room – ideal for efficient storage and organization
- 3 modern bathrooms, finished with high-quality materials
- Fully equipped closed kitchen with direct access to the garden
- 2 enclosed balconies + one terrace with access from the kitchen

- Elegant, custom-made furniture and high-end appliances
- Air conditioning, individual central heating, and luxurious finishes

**Private Garden & Additional Benefits:**

- 70 sqm private garden – green area perfect for outdoor breakfast, lounging, or children's play
- Underground parking space included, with easy access
- Modern low-rise building (P+4), well-maintained common areas

**Premium Location – Herăstrău / Aviației:**





- Just a 10-minute walk to Herăstrău Park and Promenada Mall
- Quick access to Aurel Vlaicu metro station
- Close to international schools, kindergartens, private clinics, top restaurants, and fitness centers
- Easy connectivity to DN1 and Otopeni Airport



Property details

Rooms no.	4
Useable surface	140m²
Apartment type	Apartment
Type of rooms	Independent
Type of comfort	Deluxe
Bedrooms no.	3
Kitchens no.	1
Bathrooms no.	3
Building type	Block
Year built	2010
Config	1S+P+4
Floor	Groundfloor
Balconies no.	2
State	Finished
Elevator	Yes
Parking inside	1

Amenities

-  Equipped kitchen
-  Furnished
-  Private heating
-  Air conditioning



## Location



## Photos

