



Violetta Tudorache

+40 729 005 624

contact@blissimobiliare.ro
(mailto:contact@blissimobiliare.ro)

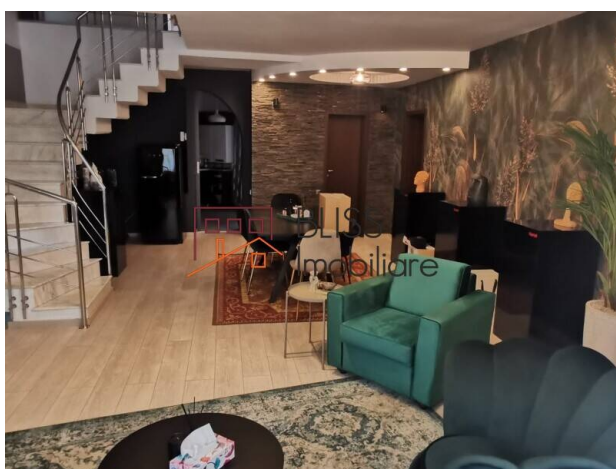
Updated on 12 June 2026

4-bedroom duplex with 30 sqm terrace

2,500 EUR/ month

Web Reference
#30979

Herastrau, Bucharest



<https://www.blissimobiliare.ro/en/apartment-duplex-4-bedrooms-for-rent-herastrau-nordului-bucharest-30979> (<https://www.blissimobiliare.ro/en/apartment-duplex-4-bedrooms-for-rent-herastrau-nordului-bucharest-30979>)

Description

BLISS Imobiliare presents a 4-bedroom duplex, located on the ground floor and the 1st floor of a building with only 2 apartments, located in the Herastrau area.

The property also includes 2 parking spaces.

It has a separate entrance from the other apartment, its entrance being from the street and the other apartment through a side of the house.

The duplex has an area of 200 square meters and is composed of 4 bedrooms, a living room with an area of 60 square meters, 3 balconies, 3 bathrooms, 2 hallways, a fully equipped kitchen, a garage and a 30 square meter terrace with a barbecue area.

It benefits from air conditioning in each room, its own central heating system, alarm, video surveillance, natural wooden parquet flooring, granite stairs, separate utility metering.

The area is secure and very quiet, there is no construction site or the possibility of building nearby and it benefits from easy access to all means of public transport, around it we find all the points of interest of the city, being one of the most exclusive and safe areas from the northern part of Bucharest.

It is surrounded by Lacul si Parcul Herastrau, the largest park in the capital, restaurants and cafes, top educational institutions and shopping centers. The area facilitates and encourages outdoor sports and relaxation activities.


Last but not least, it benefits from easy access to important roads that cross the city such as Calea Floreasca, Aviatorilor Boulevard, Kiseleff Boulevard, public transport and especially the Aurel Vlaicu metro station, crossed by the M2 highway.


Property details


Rooms no.	5
Useable surface	160m ²
Constructed surface	200m ²
Apartment type	Duplex apartment
Type of rooms	Independent
Type of comfort	Comfort 1
Bedrooms no.	4
Kitchens no.	1
Bathrooms no.	3
Building type	Villa
Year built	2000
Year renovated	2016
Config	DS+HP+2+M
Floor	Groundfloor
Balconies no.	3
State	Finished
Parking inside	1
Parking outside	1
Storage no.	1


Amenities


 Equipped kitchen

 Dishwasher

 Not furnished (Willing to furnish)

 Private heating

 Suitable for office

 Air conditioning

Location



Photos

