



Violetta Tudorache

+40 729 005 624

contact@blissimobiliare.ro
(mailto:contact@blissimobiliare.ro)

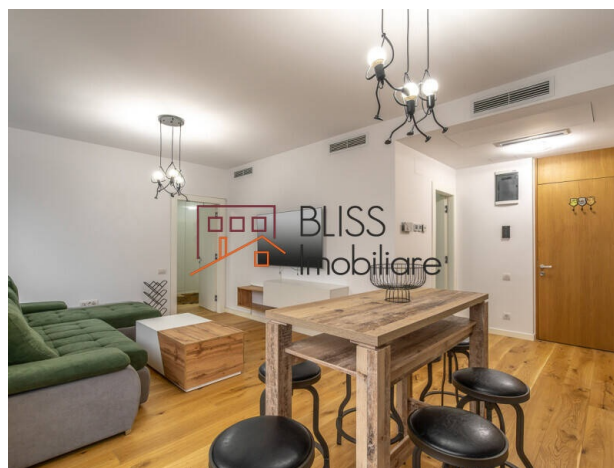
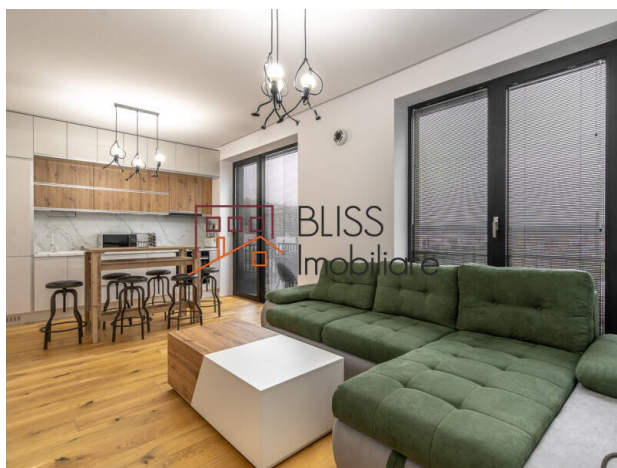
Updated on 13 May 2026

Premium Furnished 1-Bedroom Apartment with Balcony and Forest View

164,000 EUR

Web Reference
#145577

Amber Forest, Comuna Tunari, Bucharest /
Ilfov



<https://www.blissimobiliare.ro/en/apartment-1-bedroom-for-sale-otopeni-tunari-bucharest-ilfov-145577>
(<https://www.blissimobiliare.ro/en/apartment-1-bedroom-for-sale-otopeni-tunari-bucharest-ilfov-145577>)

Description

This premium 1-bedroom apartment offers a modern, peaceful and well-balanced living experience in a green, secure and carefully planned environment. With a total usable area of 54.50 sqm, the home is fully furnished and equipped, featuring South-West orientation and a direct view toward the forest.

Fully Furnished Home in a Sustainable Residential Community

The interior is efficiently and elegantly arranged, including an entrance hallway, an 18 sqm bright living area, a 5 sqm open kitchen, a 16.50 sqm master bedroom, a 5.60 sqm bathroom and a 4.60 sqm open balcony. The kitchen is fully furnished and fitted with premium appliances, while the custom-made furniture supports both modern design and everyday functionality.

The apartment benefits from premium finishes and features, including Reynaers PVC-Aluminium joinery with triple glazing, Pinum interior doors with magnetic closing, secured entrance door, underfloor heating, triple-layer parquet, centralized ventilation system, Roca sanitary ware, smart home system and multiple storage spaces.

The building is completed, has a low-rise P+3E layout, elevator, heat pump and access to an outdoor parking space equipped with an electric charging station. The residential community offers controlled access, permanent security, green areas, parks, a sports center, educational facilities, commercial area, medical services, pedestrian zones, recreation spaces and bicycle lanes.

The location in the Pipera-Tunari area provides a strong balance between natural surroundings and quick access to Bucharest, DN1, A3 and the ring road. It is a suitable home for those looking for comfort, efficiency, safety and a lifestyle connected to nature.

For further details and viewings, the BLISS Imobiliare team is ready to offer dedicated guidance and professional real estate support.

Property details

Rooms no.	2
Useable surface	50m ²
Constructed surface	55m ²
Apartment type	Apartment
Type of rooms	Semi-independent
Type of comfort	Deluxe
Bedrooms no.	1
Kitchens no.	1
Bathrooms no.	1
Building type	Block
Year built	2023
Config	P+3
Floor	2
Balconies no.	1
State	Finished
Elevator	Yes
Parking outside	1

Amenities

 Equipped kitchen

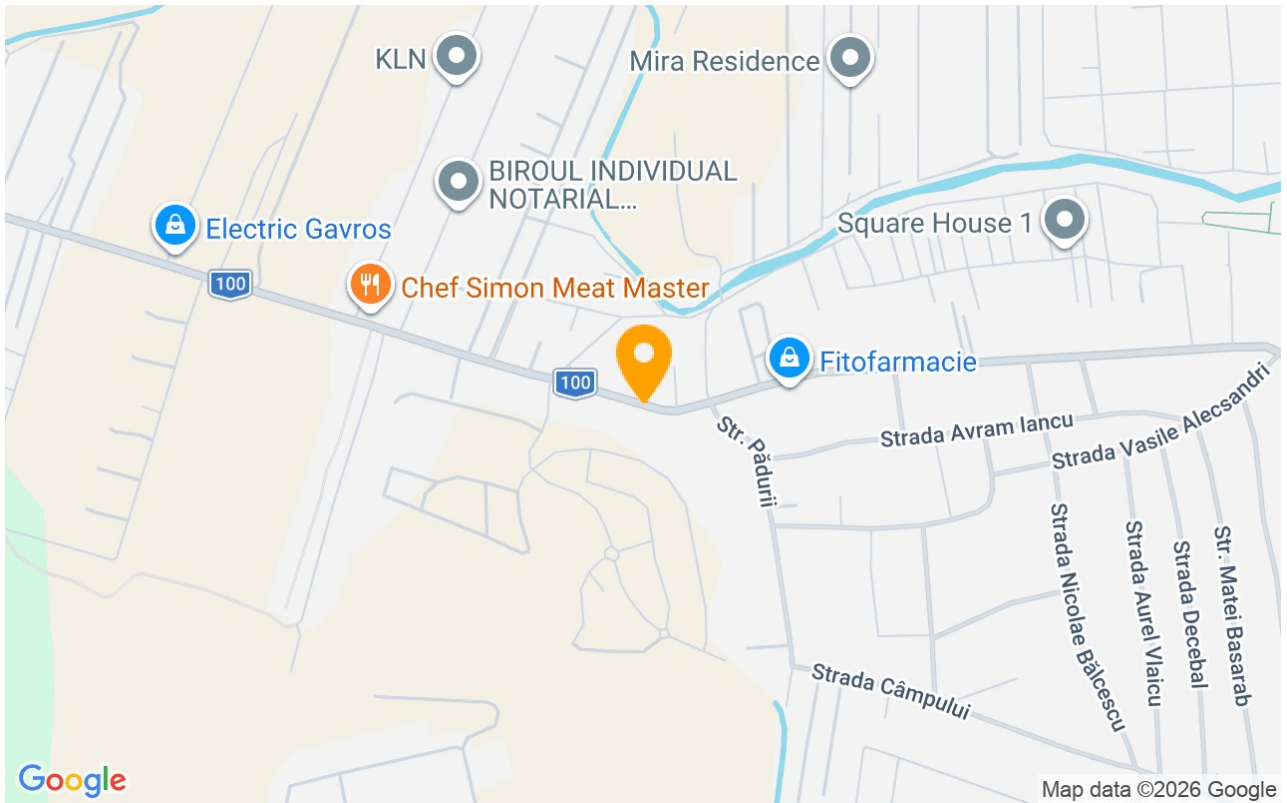
 Dishwasher

 Furnished

 Building heating

 Air conditioning

Location



Photos

