



Violetta Tudorache

+40 729 005 624

contact@blissimobiliare.ro
(mailto:contact@blissimobiliare.ro)

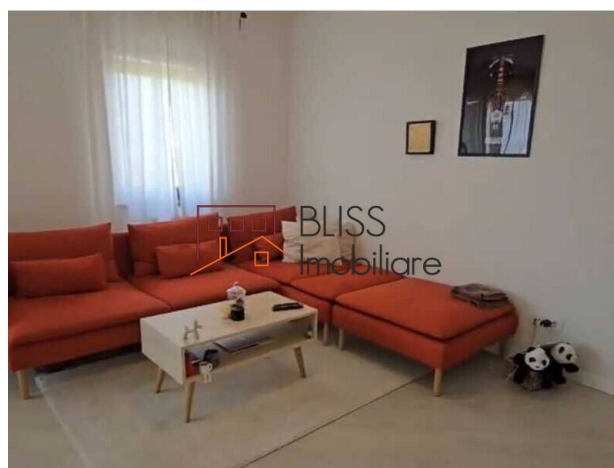
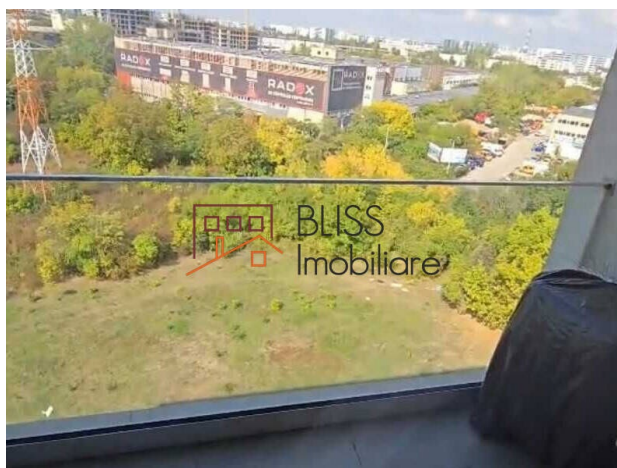
Updated on 4 April 2026

1-bedroom apartment, 8th floor, fully furnished and equipped

550 EUR/ month

Web Reference
#145359

📍 Triplea Residence, Drumul Taberei Constantin Brancusi, Bucharest



<https://www.blissimobiliare.ro/en/apartment-1-bedroom-for-rent-drumul-taberei-bucharest-145359>
(<https://www.blissimobiliare.ro/en/apartment-1-bedroom-for-rent-drumul-taberei-bucharest-145359>)

Description

A well-configured 1-bedroom apartment in a 2019-built block within Triplea Residence, Drumul Taberei. Fully furnished, equipped with new-generation appliances, and refreshed in 2025 — ready for immediate occupancy.

5 minutes from Plaza Mall and public transport, Sector 6

Property details:

- Usable area: 64 sqm
- Built area: 79 sqm
- Bedrooms: 1 (separate layout)
- Year of construction: 2019
- Renovation: 2025
- Floor: 8 of 9
- Building height: B+G+9
- Bathrooms: 1
- Balconies: 1
- Structure: reinforced concrete

- Property type: apartment block

Interior and functionality:

Separate layout with a spacious living area open to the kitchen, a private bedroom, and a fully fitted bathroom with bathtub, vessel sink, and integrated washing machine. The kitchen features dark-tone cabinetry with a wood worktop and direct balcony access. The bedroom receives strong natural light with open views over the surrounding green area. Flooring is parquet in living spaces and ceramic tile in wet areas.

Amenities:

- Own gas boiler (individual central heating)
- Air conditioning
- Washing machine (Electrolux)
- Dishwasher
- Fridge, gas hob, oven and extractor hood
- Coffee machine
- Television
- Full modern furniture package
- Intercom and video intercom
- CCTV on premises
- Lift
- Parking available optionally at additional cost

Location:

Triplea Residence is located on Bulevardul Timișoara, approximately 5 minutes from Plaza Mall, AFI Cotroceni, and the main western arterials of Bucharest. The area is well-connected by bus, tram, and metro, with Parcul Constantin Brâncuși and Parcul Drumul Taberei both within easy reach.

A fully equipped, move-in ready apartment in a quality residential complex — an efficient base in western Bucharest.

FAQ

Is the apartment available for immediate move-in?

Yes. The apartment is fully furnished and equipped with new-generation appliances, renovated in 2025. No additional works or setup are required — ready for immediate occupancy.

Is parking included in the rent?

No. Parking is not included in the base rent. An underground or above-ground parking space is available at an additional monthly cost, subject to availability.

What heating system does the apartment use?

The apartment has its own individual gas boiler, allowing full independent control over heating and energy costs — with no reliance on the building's central heating system.

Is air conditioning installed?

Yes. The apartment is fitted with an air conditioning unit, operational for cooling in summer and supplementary heating in winter.

What public transport options are available in the area?


Drumul Taberei is well-served by bus, tram, and metro lines. Stops are within close proximity to the complex, providing direct connections to central Bucharest and key transport hubs across the city.

Property details

Rooms no.	2
Useable surface	64m ²
Constructed surface	79m ²
Apartment type	Apartment
Type of rooms	Semi-independent
Bedrooms no.	1
Kitchens no.	1
Bathrooms no.	1
Building type	Block
Year built	2019
Config	1S+DS+HP+9
Floor	All
Balconies no.	1
State	Finished
Elevator	Yes
Earthquake risk class	Unclassified

Amenities

 Equipped kitchen

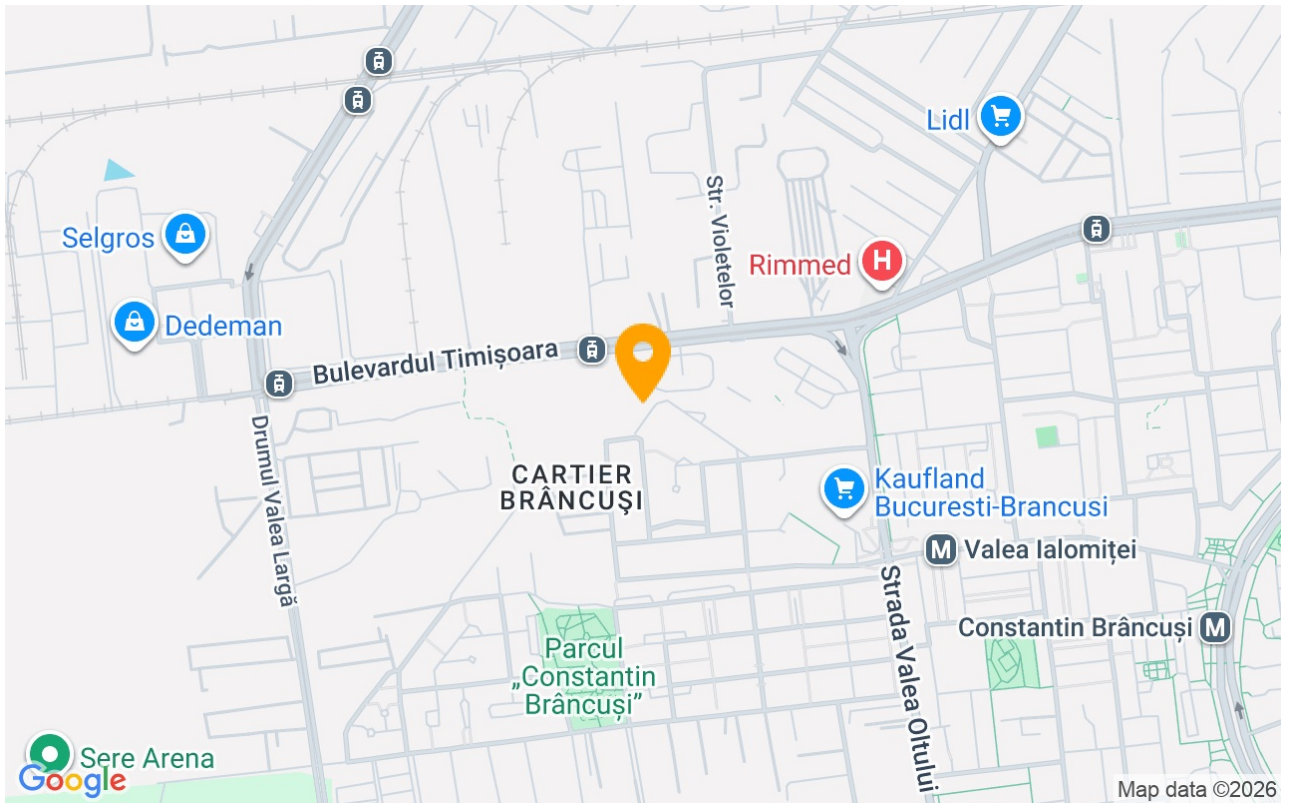
 Dishwasher

 Furnished

 Private heating

 Air conditioning

Location



Photos

