

**Violetta Tudorache**

☎ +40 729 005 624

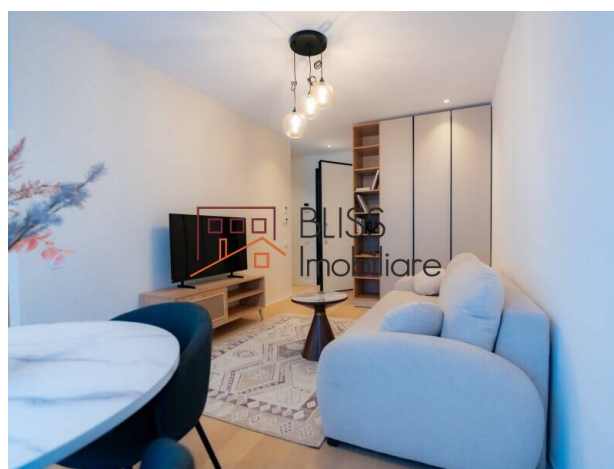
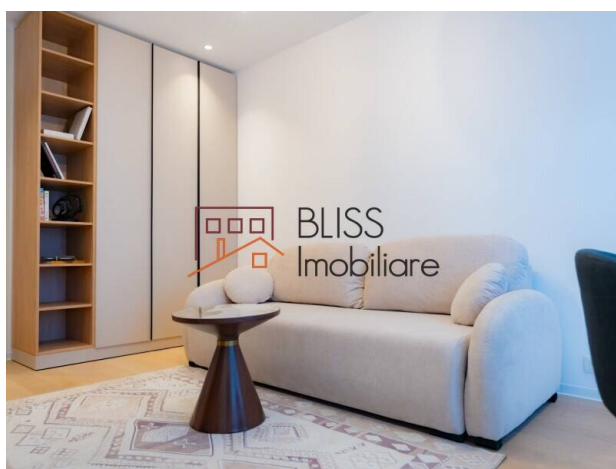
✉ contact@blissimobiliare.ro
(mailto:contact@blissimobiliare.ro)

Updated on 18 March 2026

Modern Studio near Pipera Metro

725 EUR +VAT / monthWeb Reference
#145292

📍 One Lake Club, Fabrica de Glucoza, Bucharest



<https://www.blissimobiliare.ro/en/studio-apartment-for-rent-aviatiei-promenada-mall-metro-pipera-bucharest-145292> (<https://www.blissimobiliare.ro/en/studio-apartment-for-rent-aviatiei-promenada-mall-metro-pipera-bucharest-145292>)

Description

Modern Urban Studio - Fabrica de Glucoză, Promenada Mall & Business District

Smart Living in The Heart of North Bucharest

We present a modern studio, defined by efficiency and style, strategically located in Bucharest's most dynamic business area. If time is your most precious resource, this property situated between Aviației and Pipera is the perfect choice, offering the comfort of a "turn-key" home right next to your office.

Contemporary Design and Optimized Space

The interior has been designed to maximize every square meter without compromising on aesthetics:

- Layout: Airy open space with well-defined areas for rest and relaxation.
- Finishes: Modern materials in neutral tones, allowing for quick personalization of the space.
- Kitchen: Fully furnished and equipped, discreetly integrated to maintain the studio's tidy appearance.
- Amenities: Air conditioning system, large windows for abundant natural light, and smart storage solutions.

Location: The Heart of Business and Lifestyle

The main competitive advantage of this studio is its unbeatable positioning:

- Business Hub: Within walking distance of the major office buildings in Pipera-Aviației
- Transportation: Instant access to the Pipera Metro station, facilitating easy connection to the rest of the city.
- Leisure: Promenada Mall, top-tier restaurants in the North, and Herăstrău Park are your immediate neighbors.

At BLISS Imobiliare, we ensure a seamless experience through professionalism and market expertise. BLISS Imobiliare guides you with clarity and structure.


Property details


Rooms no.	2
Useable surface	40m ²
Apartment type	Studio apartment
Type of rooms	Semi-independent
Bedrooms no.	1
Kitchens no.	1
Bathrooms no.	1
Building type	Block
Year built	2025
Config	1S+P+10
Floor	7
State	Finished
Elevator	Yes
From developer	No

Amenities

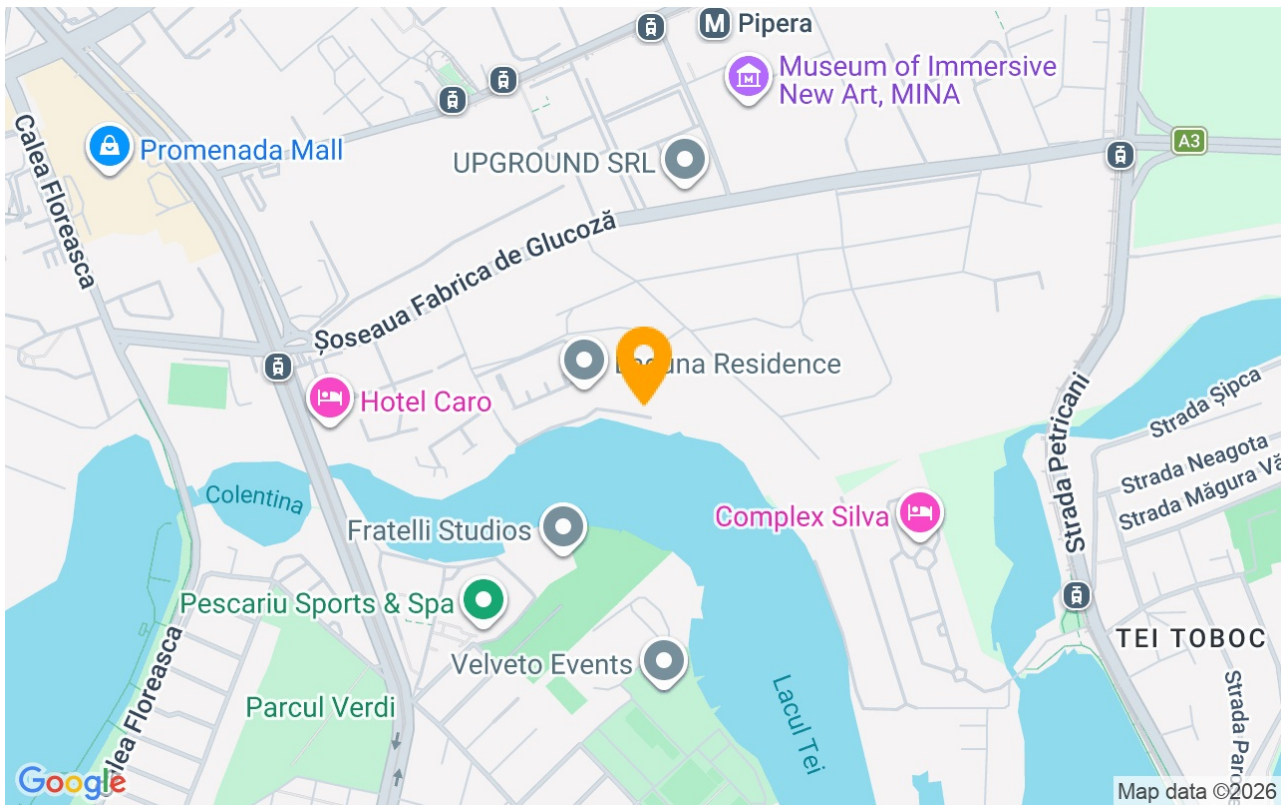
 Equipped kitchen

 Furnished

 Building heating

 Air conditioning

Location



Photos

