

**Violetta Tudorache**

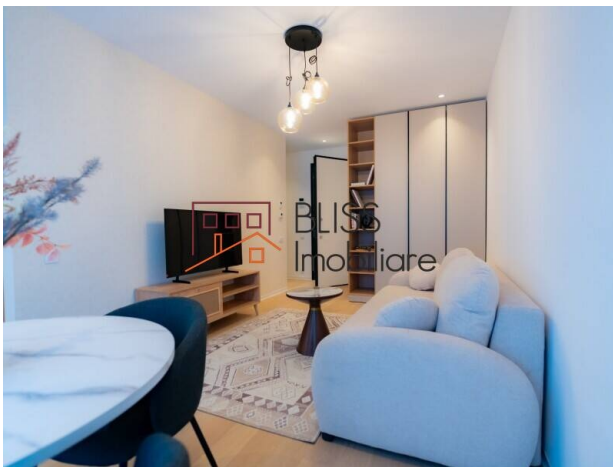
☎ +40 729 005 624

✉ contact@blissimobiliare.ro
(mailto:contact@blissimobiliare.ro)

Updated on 17 March 2026

Modern Studio Within Walking Distance of Pipera Metro

📍 One Lake Club, Fabrica de Glucoza, Bucharest

725 EUR +VAT / monthWeb Reference
#145291

<https://www.blissimobiliare.ro/en/studio-apartment-for-rent-aviatiei-promenada-mall-metro-pipera-bucharest-145291> (<https://www.blissimobiliare.ro/en/studio-apartment-for-rent-aviatiei-promenada-mall-metro-pipera-bucharest-145291>)

Description

Modern and Efficient Studio - Fabrica de Glucoză, Promenada Mall & Metro Pipera

Maximum Connectivity and Urban Comfort

We present a modern studio, strategically located in the heart of Bucharest's business district, at the junction of Aviației and Pipera neighborhoods. This property is the ideal solution for those who want to live just minutes away from the office in an optimized, tastefully furnished, and fully equipped space.

Intelligent Design and Urban Comfort

The studio has been designed to provide maximum functionality in a contemporary setting:

- Living/Sleeping Area: A bright, open space cleverly arranged to separate the relaxation area from the sleeping zone, offering an airy atmosphere.
- Kitchen: Fully furnished and equipped with modern appliances, ready for immediate use.
- Bathroom: High-quality finishes and modern fixtures, maintaining the aesthetic line of the entire home.
- Status: The property is offered fully furnished and equipped, benefiting from recent finishes and impeccable maintenance.

Amenities and Features

To ensure a worry-free lifestyle, the studio features:

- **Climate Control:** Air conditioning system for optimal thermal comfort.
- **Comfort:** Large windows allowing natural light to flow in throughout the day.
- **Security:** Located in a safe building within a premium residential area.

Location: The Business Hub at Your Doorstep

The location is the main asset of this studio, being situated within walking distance of:

- **Transportation:** Pipera station and multiple surface transport lines.
- **Shopping:** Promenada Mall, top-tier restaurants, specialty coffee shops, and premium fitness centers (World Class).
- **Business Hub:** Immediate proximity to the most important office buildings in Pipera-Aviației
- **Nature:** Quick access to Herăstrău Park for sports and relaxation.

Property details


Rooms no.	2
Useable surface	40m ²
Apartment type	Studio apartment
Type of rooms	Semi-independent
Bedrooms no.	1
Bathrooms no.	1
Building type	Block
Year built	2025
Config	1S+P+10
Floor	7
State	Finished
Elevator	Yes
From developer	No

Amenities

 Equipped kitchen

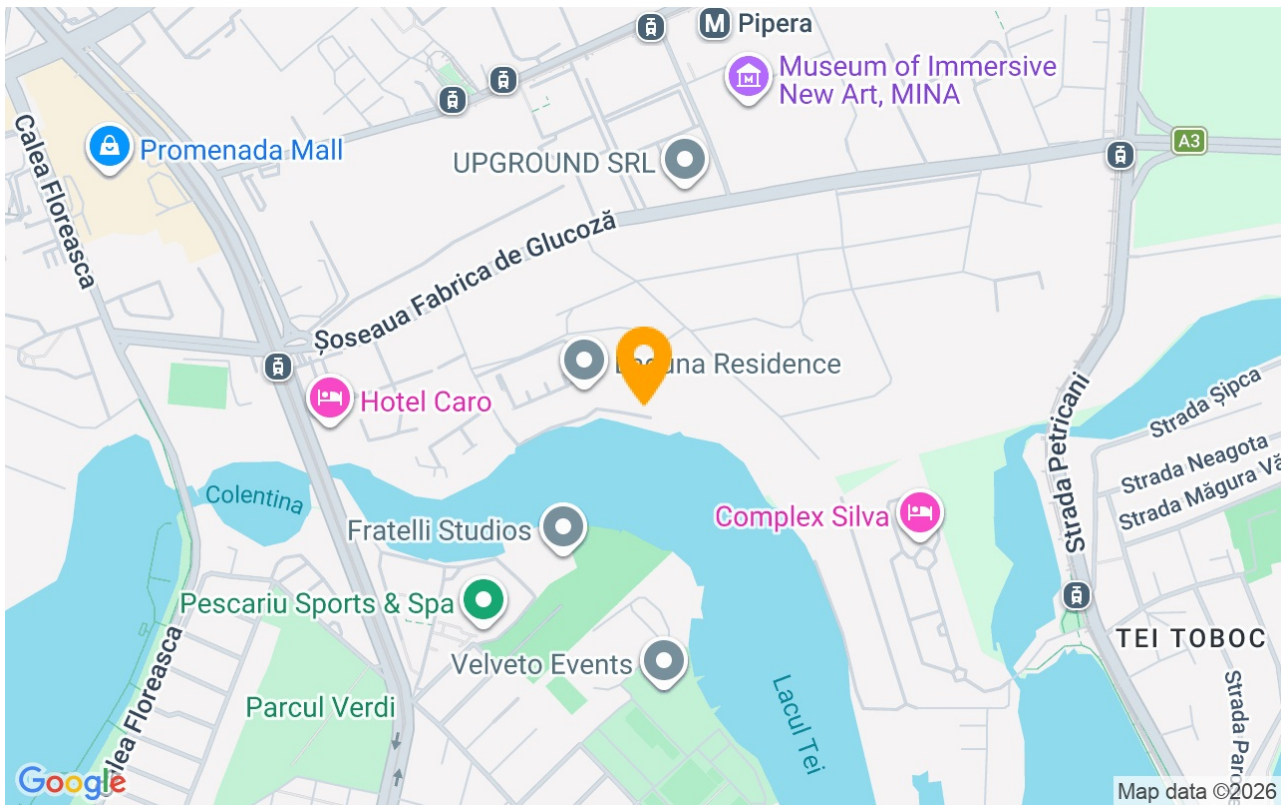
 Dishwasher

 Furnished

 Building heating

 Air conditioning

Location



Photos

