



**Violetta Tudorache**

+40 729 005 624

contact@blissimobiliare.ro  
(mailto:contact@blissimobiliare.ro)

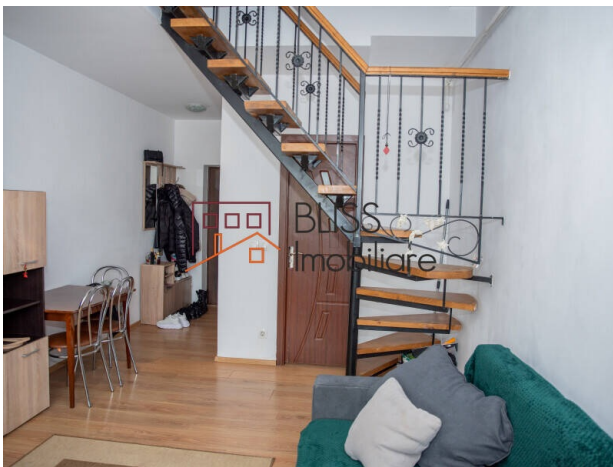
Updated on 30 March 2026

## 2 Bedroom Apartment, Close to Metro Station

**77,000 EUR**

Web Reference  
**#144033**

Aparatorii Patriei, Bucharest



<https://www.blissimobiliare.ro/en/apartment-2-bedrooms-for-sale-berceni-popesti-leordeni-bucharest-144033> (<https://www.blissimobiliare.ro/en/apartment-2-bedrooms-for-sale-berceni-popesti-leordeni-bucharest-144033>)

### Description

3-room apartment with separate layout, located on the 4th floor of a 1972 building, a few minutes from Apărătorii Patriei metro station.

## Upper Floor Apartment for Intimacy and Natural Light

The apartment has 56 sqm usable area and approximately 60 sqm built area, suitable for personal residence or investment purposes.

### Layout

- Living room
- 2 bedrooms
- Separate kitchen
- Bathroom
- Storage spaces
- Separate layout

### 4th floor of 4

- No neighbors above
- Good natural light

- Increased privacy

**Location - Berceni / Apărătorii Patriei area**

- Apărătorii Patriei metro station - within walking distance
- Quick access to Șoseaua Berceni and Dimitrie Leonida Boulevard
- Supermarkets and local shops
- Pharmacies and services
- Schools

A practical 2-bedroom apartment with good connectivity and efficient space distribution.



## Property details

<b>Rooms no.</b>	3
<b>Useable surface</b>	56m <sup>2</sup>
<b>Constructed surface</b>	60m <sup>2</sup>
<b>Apartment type</b>	Apartment
<b>Type of rooms</b>	Independent
<b>Bedrooms no.</b>	2
<b>Kitchens no.</b>	1
<b>Bathrooms no.</b>	1
<b>Toilets no.</b>	1
<b>Building type</b>	Block
<b>Year built</b>	1972
<b>Config</b>	P+4+M
<b>Floor</b>	4
<b>State</b>	Finished
<b>Elevator</b>	No

## Amenities

 Equipped kitchen

 Furnished

 City heating

 Air conditioning



## Location



## Photos

