



**Violetta Tudorache**

+40 729 005 624

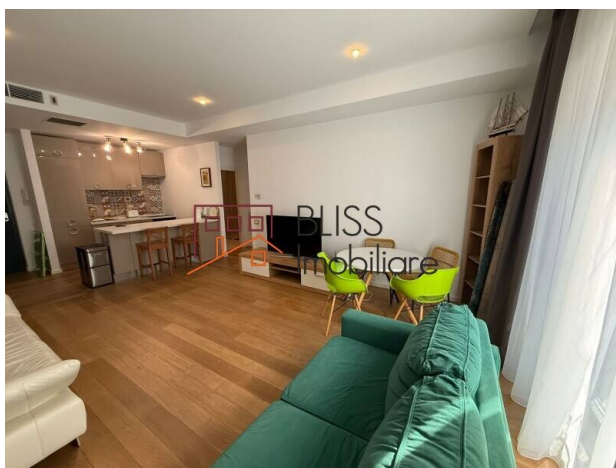
contact@blissimobiliare.ro  
(mailto:contact@blissimobiliare.ro)

Updated on 7 December 2025

## **1-Bedroom Apartment - Modern, Elegant, and Fully Furnished**

Web Reference  
**#143323**

📍 One Floreasca Lake I, Aviatiei, Bucharest



<https://www.blissimobiliare.ro/en/apartment-1-bedroom-for-rent-aviatiei-promenada-mall-metro-pipera-bucharest-143323> (<https://www.blissimobiliare.ro/en/apartment-1-bedroom-for-rent-aviatiei-promenada-mall-metro-pipera-bucharest-143323>)

### **Description**

**1-Bedroom Apartment in One Floreasca Lake - 58 sqm, Modern Design, Premium Finishes**

## **Luxury apartment with elegant interiors in North Bucharest**

Experience the elegance of lakeside living in this stylish 1-bedroom apartment located in the exclusive One Floreasca Lake residential complex, right on the shores of Lake Floreasca. Situated on the 2nd floor of a modern building completed in 2015, the property combines contemporary design, comfort, and functionality in one of Bucharest's most desirable areas.

### **Layout & Interior Features**

- Total usable area: 58 sqm
- Bright and welcoming living room with sofa and relaxation area
- Elegant bedroom with a large bed and spacious dressing
- Open-space kitchen, fully furnished and equipped (induction hob, dishwasher, refrigerator)
- Modern bathroom with both shower and bathtub
- Additional sofa bed in the living room for guests

- Minimalist décor and modern furniture

### **Finishes & Equipment**

- Underfloor heating system
- Birch wood parquet flooring
- White wooden interior doors
- Marazzi tiles and Villeroy & Boch sanitary ware
- Fully furnished and ready to move in

### **Building & Location**





- Prestigious residential complex with 24/7 security and controlled access
- Beautifully landscaped green areas and panoramic lake views
- Walking distance to Floreasca Park, Promenada Mall, and the Barbu Văcărescu – Pipera business hub



Property details

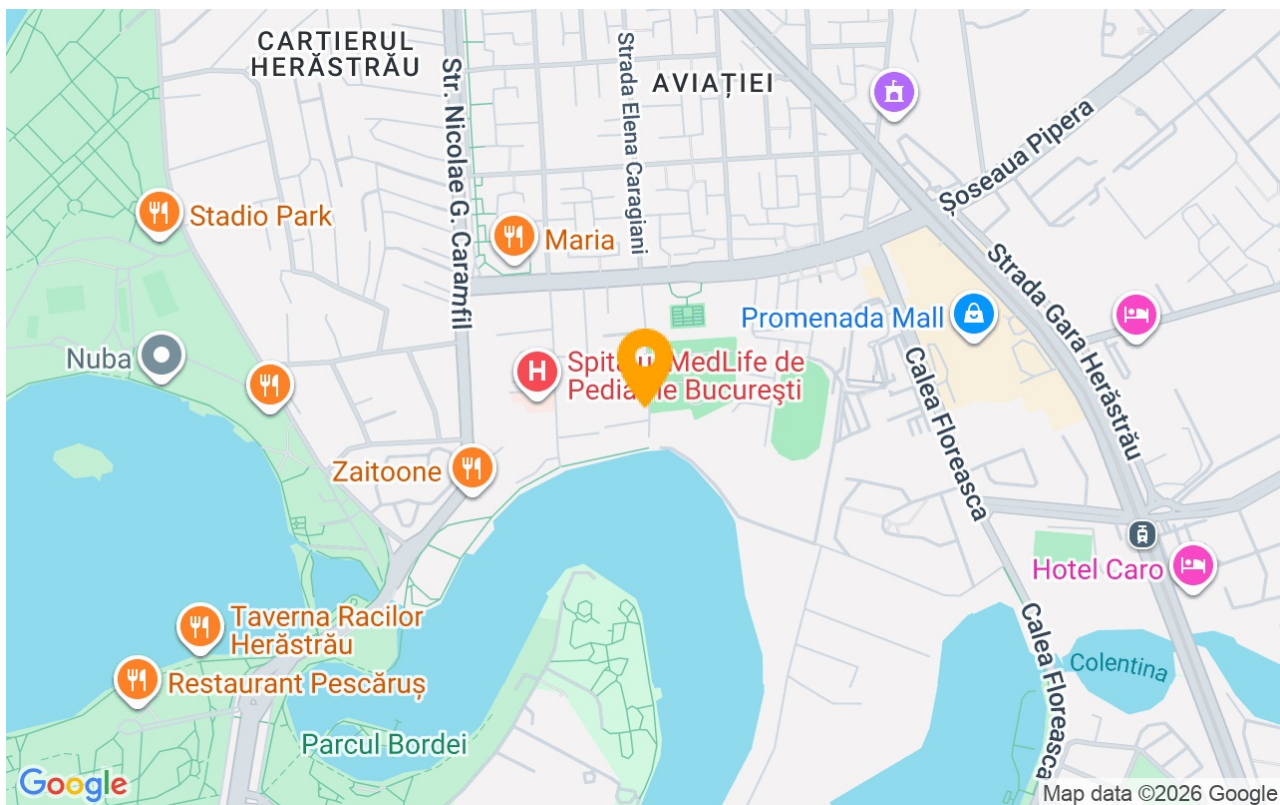
Rooms no.	2
Useable surface	58m²
Apartment type	Apartment
Type of rooms	Independent
Bedrooms no.	1
Kitchens no.	1
Bathrooms no.	1
Building type	Block
Year built	2015
Config	1S+DS+HP+5
Floor	2
State	Finished
Elevator	Yes
Earthquake risk class	Unclassified

Amenities

-  Equipped kitchen
-  Dishwasher
-  Furnished
-  Building heating



## Location



## Photos

