



Violetta Tudorache

+40 729 005 624

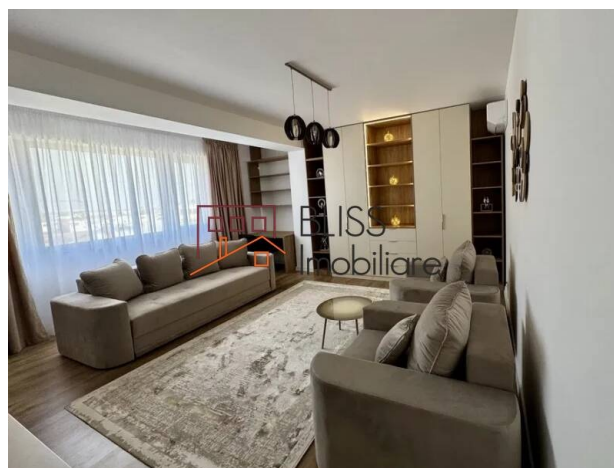
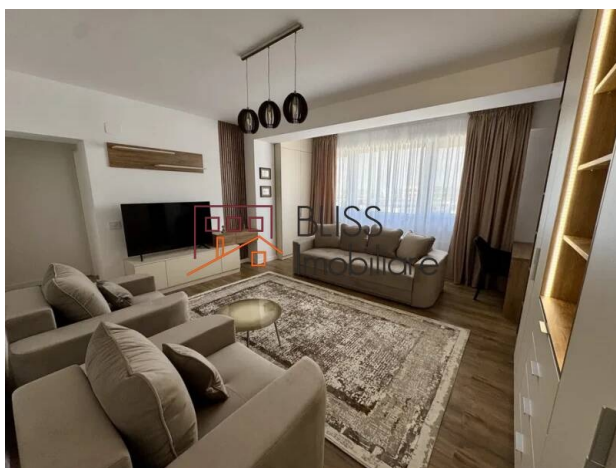
contact@blissimobiliare.ro
(<mailto:contact@blissimobiliare.ro>)

Updated on 20 October 2025

1-Bedroom Apartment Fully Furnished With Balcony And Parking

Web Reference
#143223

📍 Ivory Residence Pipera, Pipera OMV Rond,
Bucharest / Ilfov



<https://www.blissimobiliare.ro/en/apartment-1-bedroom-for-rent-iancu-nicolae-pipera-bucharest-ilfov-143223> (<https://www.blissimobiliare.ro/en/apartment-1-bedroom-for-rent-iancu-nicolae-pipera-bucharest-ilfov-143223>)

Description

This newly built 1-bedroom apartment is located in northern Bucharest, within the Ivory Residence compound – a sought-after area known for its tranquility, excellent connectivity, and proximity to essential services. With a usable area of 60 sqm, the apartment is fully furnished and move-in ready.

Located In One Of The Most Desired Residential Areas Of Bucharest

Layout and finishes:

Situated on the 5th floor of a 7-story building, the apartment is fully detached and thoughtfully laid out for maximum comfort.

It is furnished with premium-quality pieces and offers multiple built-in storage solutions.

Finishes include high-end ceramic tiles, parquet flooring, modern sanitary installations, PVC windows with thermal insulation, and a secure metal entrance door.

Comfort and technical features:

The apartment features underfloor heating, its own gas boiler, and two air conditioning units for year-round comfort.

Utilities are individually metered.

It includes one surface parking space and a dedicated storage unit in the basement.

Residential complex and security:

Ivory Residence is a secure, modern residential complex with 24/7 controlled access, video surveillance, and a well-maintained inner courtyard that enhances the residential experience.

Area and accessibility:





The property enjoys excellent connectivity, with quick access to public transportation, shopping centers like Pipera Plaza, Lidl, and Kaufland, as well as to the Ring Road, A3 highway, and Henri Coandă International Airport.

This apartment is a perfect choice for anyone seeking a balanced lifestyle in a quiet yet highly accessible location.

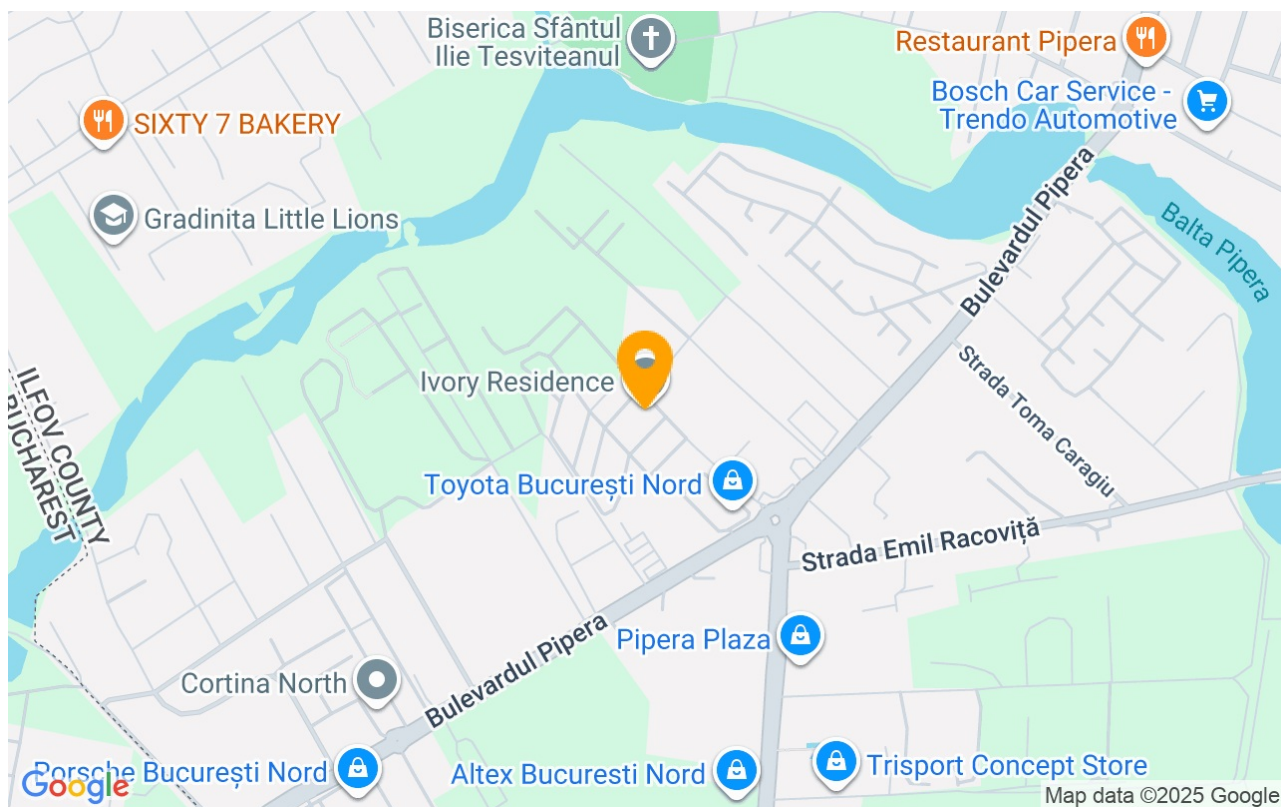
Property details

Rooms no.	2
Useable surface	60m²
Apartment type	Apartment
Type of rooms	Independent
Type of comfort	Comfort 1
Bedrooms no.	1
Kitchens no.	1
Bathrooms no.	1
Building type	Block
Year built	2023
Config	1S+P+7
Floor	5
Balconies no.	1
State	Finished
Elevator	Yes
Parking outside	1
Storage no.	1
From developer	No

Amenities

-  Equipped kitchen
-  Furnished
-  Private heating
-  Air conditioning

Location



Photos

