



Violetta Tudorache

+40 729 005 624


contact@blissimobiliare.ro
(mailto:contact@blissimobiliare.ro)

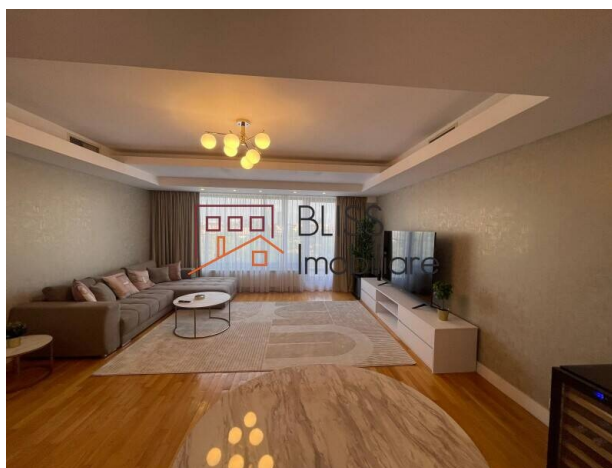
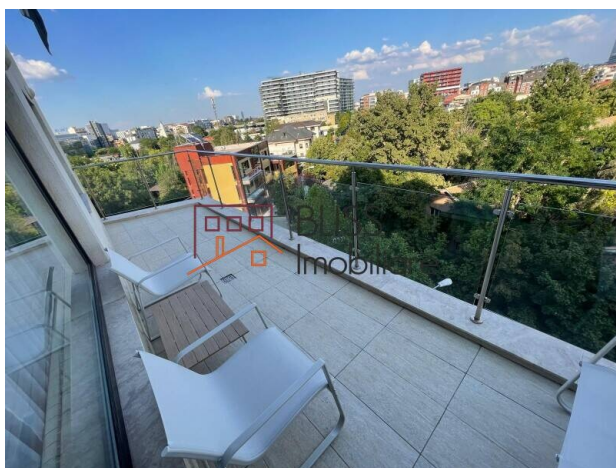
Updated on 23 June 2026

2-Bedroom Apartment in Herăstrău - 2 Terraces, Fully Furnished

1,950 EUR/ month

Web Reference
#142826

 Herastrau, Bucharest



<https://www.blissimobiliare.ro/en/apartment-2-bedrooms-for-rent-herastrau-nordului-bucharest-142826>
(<https://www.blissimobiliare.ro/en/apartment-2-bedrooms-for-rent-herastrau-nordului-bucharest-142826>)

Description

2-Bedroom Apartment in Herăstrău - 110 sqm, Fully Furnished, 2 Terraces

Modern comfort with 2 terraces and optional underground parking

Experience modern comfort in this spacious and elegant 2-bedroom apartment, located on the 5th floor of a contemporary building, just 1 minute away from the main entrance of Herăstrău Park. With a usable area of 110 sqm and two generous terraces, this property perfectly combines the tranquility of a green area with quick access to all the city's amenities.

Layout & Features

- Usable area: 110 sqm
- Bright and spacious living room with lounge area and direct access to the terrace
- Modern kitchen, fully furnished and equipped
- Master bedroom with dressing area and access to terrace
- Second bedroom - ideal as children's room, office, or guest bedroom
- Two stylish bathrooms with high-quality finishes

- 2 sunny terraces, perfect for outdoor relaxation
- Fully furnished and equipped, move-in ready
- Premium finishes, air conditioning

Facilities & Advantages

- Option to rent an underground parking space (extra cost)
- Modern building, well-maintained
- Secure access and clean common areas

Premium Location - Herăstrău

One of Bucharest's most prestigious residential areas, offering direct access to:

- Herăstrău Park – just 1 minute away
- Fine restaurants and cafés on Șoseaua Nordului
- Promenada Mall and the Barbu Văcărescu – Pipera business district
- Aurel Vlaicu metro station, DN1, and Otopeni Airport

Property details


Rooms no.	3
Useable surface	110m ²
Apartment type	Apartment
Type of rooms	Independent
Bedrooms no.	2
Kitchens no.	1
Bathrooms no.	2
Building type	Block
Year built	2009
Config	1S+P+6
Floor	5
Balconies no.	2
State	Finished
Elevator	Yes


Amenities


 Equipped kitchen

 Dishwasher

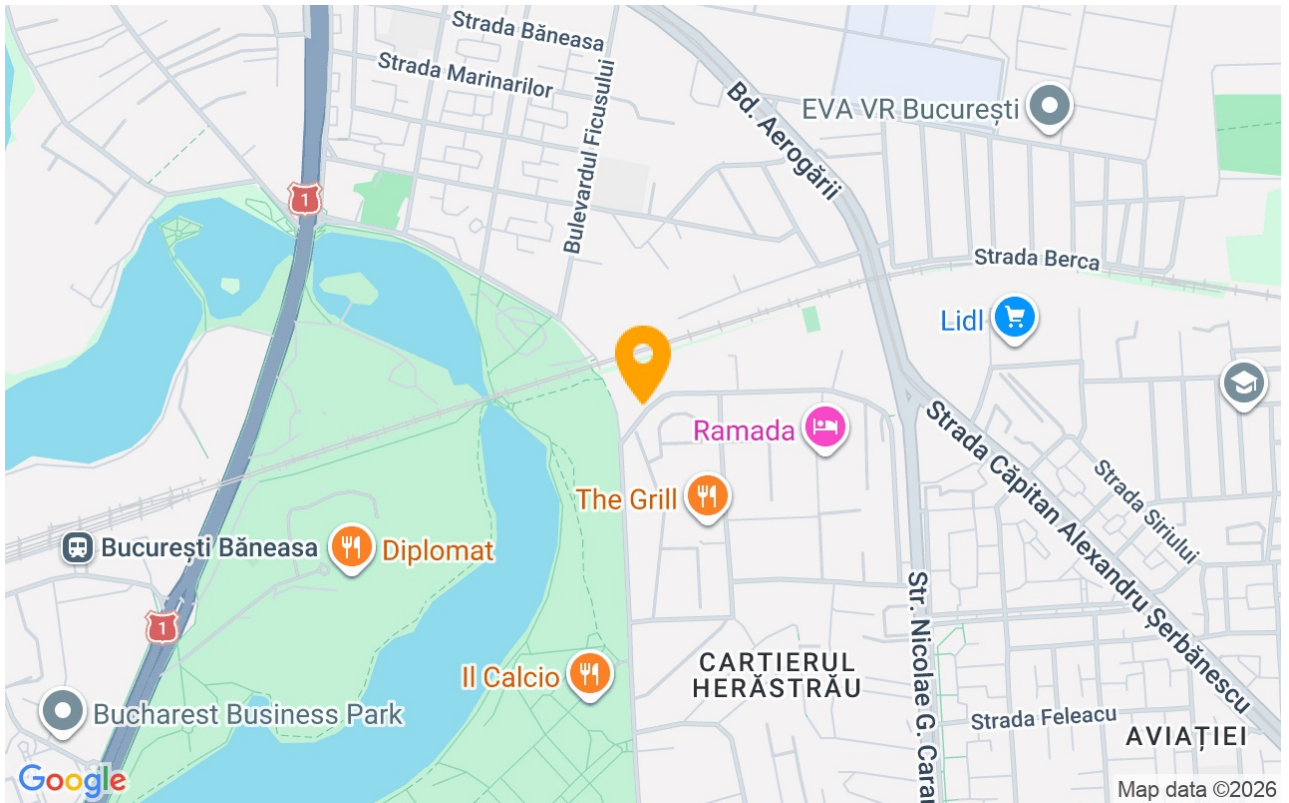
 Furnished

 Building heating

 Suitable for office

 Air conditioning

Location



Photos

