



Violetta Tudorache

+40 729 005 624

contact@blissimobiliare.ro
(mailto:contact@blissimobiliare.ro)

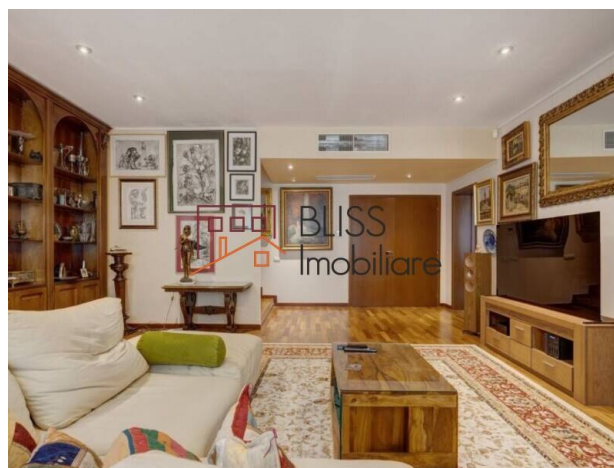
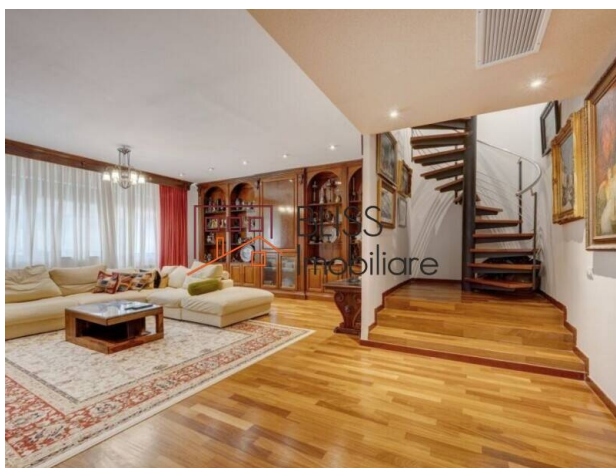
Updated on 29 January 2026

5-Bedroom Penthouse with Panoramic Terraces - Herăstrău Area

799,000 EUR

Web Reference
#142145

📍 Gafencu Grand Residence, Herastrau,
Bucharest



<https://www.blissimobiliare.ro/en/apartment-penthouse-5-bedrooms-for-sale-herastrau-nordului-bucharest-142145> (<https://www.blissimobiliare.ro/en/apartment-penthouse-5-bedrooms-for-sale-herastrau-nordului-bucharest-142145>)

Description

Exceptional 5-Bedroom Penthouse with 4 Terraces - 223 sqm of Refined Living Near Herăstrău Park

Prestigious Location in Northern Bucharest, Near Herăstrău Park

Live above it all in this spectacular two-level penthouse, located in an exclusive residential building just steps away from Herăstrău Park, in the highly desirable northern part of Bucharest. Occupying the entire 5th and 6th floors of a boutique building with only 14 apartments, this rare property offers complete privacy, panoramic views, and an elegant lifestyle in a quiet and refined setting.

Spacious Layout and Ideal Functionality - 223 sqm of Interior Living Space

With a generous 223 sqm of usable interior space, complemented by 96 sqm of terraces and balconies, this penthouse redefines urban comfort. A stylish internal staircase connects both floors, with every space thoughtfully designed for both practicality and aesthetics.

Lower Level (5th Floor):

- Expansive 40 sqm living room, perfect for entertaining or relaxing
- Fully equipped, closed kitchen – 17 sqm
- Master bedroom – 23 sqm with ensuite bathroom – 9 sqm
- Second bedroom – 21 sqm
- Third bedroom – 16 sqm
- Secondary bathroom – 4 sqm
- Guest WC – 2.25 sqm
- Two sunny terraces – 13 sqm and 8 sqm

Upper Level (6th Floor - Penthouse Level):

- Multifunctional room – 30 sqm – ideal as a home office, fitness, or hobby space
- Additional bedroom or workspace – 15 sqm
- Elegant bathroom – 7 sqm
- Two spectacular terraces – 36 sqm and 28 sqm – perfect for outdoor dining or private lounging

High-End Finishes & Interior Design

- Custom-made solid wood furniture
- Hardwood flooring, marble, and natural stone in hallways and bathrooms
- High ceilings with built-in central air conditioning
- High-quality PVC windows and impeccably maintained finishes
- Artwork and tasteful decorative pieces throughout
- Fixed furniture remains; mobile furniture and personal decorative items will be removed

Technical Features & Comfort

- Heating: Central building boiler with radiators
- Cooling: Centralized multisplit air conditioning system
- Individual utility metering
- 2 underground parking spaces
- Secured building access






Prime Location - Nordului / Herăstrău Area

- Located in one of the most exclusive neighborhoods of Bucharest, this penthouse offers easy access to:
- Herăstrău Park and Șoseaua Nordului
- Fine dining, cafes, and international schools
- Promenada Mall, Pipera and Floreasca business hubs
- Public transport, DN1, and Otopeni Airport

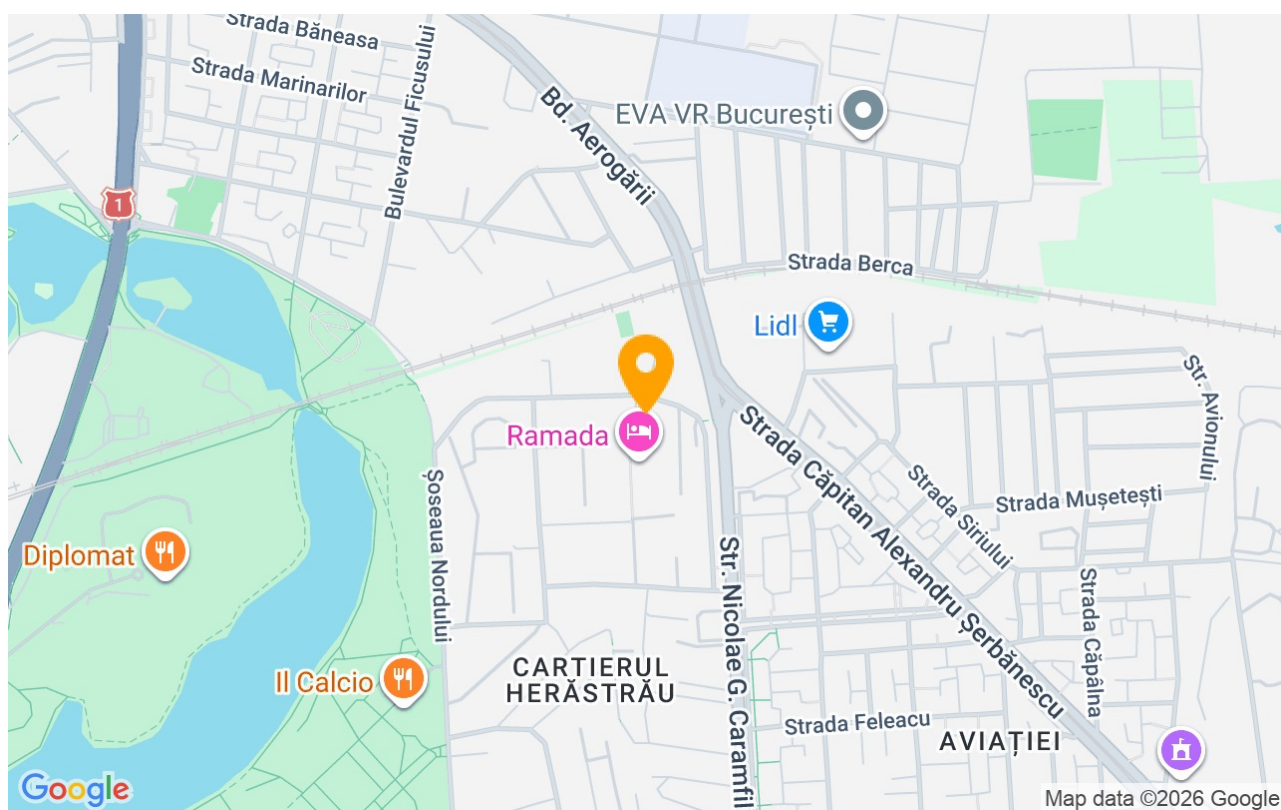
Property details

Rooms no.	6
Useable surface	223m²
Constructed surface	312m²
Apartment type	Penthouse apartment
Type of rooms	Independent
Bedrooms no.	5
Kitchens no.	1
Bathrooms no.	3
Toilets no.	1
Building type	Block
Year built	2008
Config	1S+P+5
Floor	5
Balconies no.	2
State	Finished
Elevator	Yes
Parking inside	2
Earthquake risk class	Unclassified

Amenities

-  Equipped kitchen
-  Furnished
-  Private heating
-  Suitable for office
-  Air conditioning

Location



Photos

