



**Violetta Tudorache**

+40 729 005 624

contact@blissimobiliare.ro  
(mailto:contact@blissimobiliare.ro)

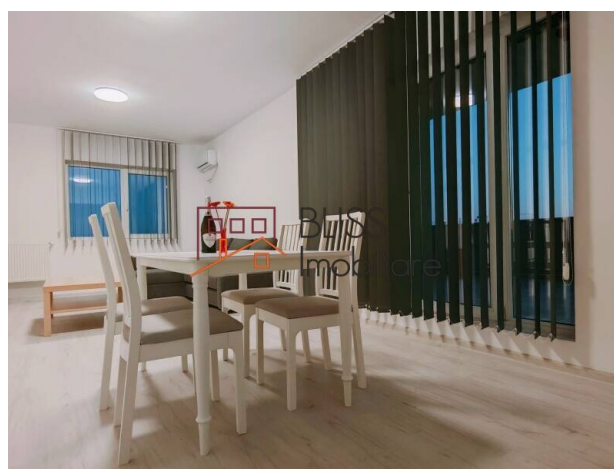
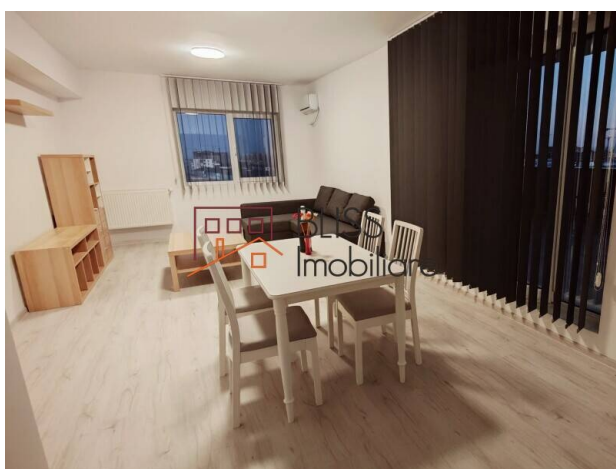
Updated on 15 July 2025

## Luxury Penthouse for Rent in Titan

**1,000 EUR/ month**

Web Reference  
**#126144**

📍 Auchan Titan, Bucharest



<https://www.blissimobiliare.ro/en/apartment-2-bedrooms-for-rent-auchan-titan-bucharest-126144>  
(<https://www.blissimobiliare.ro/en/apartment-2-bedrooms-for-rent-auchan-titan-bucharest-126144>)

### Description

Penthouse for Rent – 3 Rooms, Panoramic Terrace & Covered Parking

## Close to Parks, Schools & Fitness Centers

If you're looking for a modern and comfortable space, this 3-room penthouse in Titan – Parcul Teilor is the perfect choice. With a 100 sqm panoramic terrace and a stylish design completed in December 2023, you'll enjoy a relaxed and convenient lifestyle.

Main Features:

- Usable area: 100 sqm
- Panoramic terrace (100 sqm, partially covered) – ideal for relaxing and enjoying beautiful views
- Floor: 7/7
- 2 spacious bedrooms & 2 modern bathrooms
- Large 40 sqm living room – perfect for family time or entertaining guests
- Walk-in closets & additional storage space
- Fully equipped kitchen with brand-new Samsung, Gorenje, and Candy appliances (including a fridge, 9kg washing machine, electric oven, and gas stove)
- Two 12,000 BTU air conditioning units for year-round comfort
- Modern, fully furnished interiors, including brand-new memory foam orthopedic mattresses
- Private covered parking space

Additional Features:

- 2 elevators for easy access
- Video surveillance for extra security

Nearby amenities:

- Public transport: bus (253, 330), metro (1 Decembrie 1918 & Nicolae Teclu stations), tram (19, 27, 40)
- Parcul Teilor (1-minute walk) – perfect for relaxing strolls
- Titan Sports Complex (1-minute walk) – featuring a swimming pool, gym, football, and tennis courts
- Supermarkets: Auchan Titan, Lidl, Kaufland, Penny, Mega Image, Profi
- Shopping centers: Ikea Pallady (2 km), World Class Titan (15 minutes)
- Schools & Kindergartens: Școala Gimnazială 82, 116, 149, Grădinița 196

Don't miss the chance to see this amazing penthouse!



BLISS Imobiliare



Property details

Rooms no.	3
Useable surface	100m²
Apartment type	Apartment
Type of rooms	Independent
Bedrooms no.	2
Kitchens no.	1
Bathrooms no.	2
Building type	Block
Year built	2023
Config	P+7
Floor	7
State	Finished
Elevator	No
Parking inside	1
From developer	No

Amenities

-  Equipped kitchen
-  Furnished
-  Air conditioning



## Location



## Photos

