



Violetta Tudorache

+40 729 005 624

contact@blissimobiliare.ro
(mailto:contact@blissimobiliare.ro)

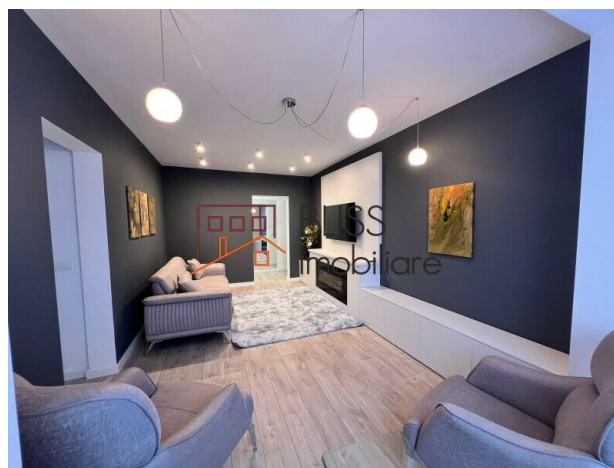
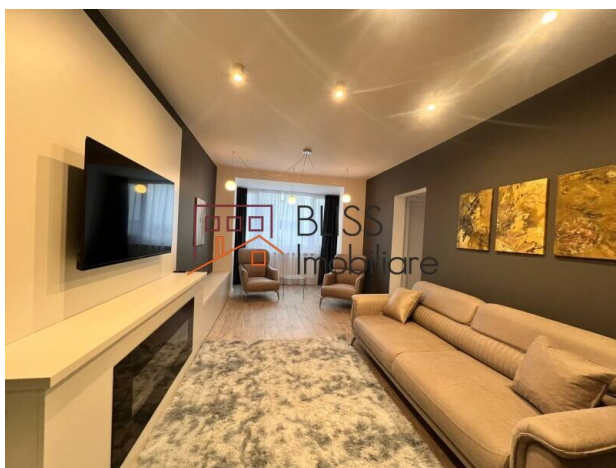
Updated on 16 July 2025

2-Bedroom Apartment with Panoramic Views - Dorobanți Area

1,000 EUR/ month

Web Reference
#125748

📍 Dorobanti Beller, Bucharest



<https://www.blissimobiliare.ro/en/apartment-2-bedrooms-for-rent-dorobanti-primaverii-kiseleff-aviatorilor-bucharest-125748> (<https://www.blissimobiliare.ro/en/apartment-2-bedrooms-for-rent-dorobanti-primaverii-kiseleff-aviatorilor-bucharest-125748>)

Description

2-Bedroom Apartment with Stunning Park Views - Dorobanți / Floreasca Area

Bright Interior, Elegant Decor, Prime Location in North Bucharest

Experience urban elegance in this fully furnished and equipped 2-bedroom apartment, ideally located in one of Bucharest's most exclusive neighborhoods - Dorobanți, on a quiet street just beside Floreasca Park. Situated on the 9th floor of an 11-story building, the apartment boasts breathtaking panoramic views and a refined atmosphere, perfect for a modern, comfortable lifestyle.

Layout and Premium Features:

- Usable area: 70 sqm
- Bright living room with decorative electric fireplace and lounge area
- Fully equipped kitchen: dishwasher, stove, oven
- Two comfortable bedrooms, modernly furnished
- Elegant bathroom with high-quality finishes
- Air conditioning, washer-dryer combo

- Smart TV, luxury furniture, stylish decorative touches
- Central heating system (building-wide) for optimal thermal comfort

Additional Benefits:

- High floor (9/11) – abundant natural light and impressive views
- Immediate access to Floreasca Park – ideal for walks and outdoor leisure
- Quiet street, yet perfectly connected to the city center

Prime Location – Dorobanți / Floreasca:


- Close to Piața Dorobanți, Calea Floreasca, and Ștefan cel Mare Boulevard
- Nearby: fine restaurants, cafes, premium shops, clinics, and top schools
- Fast access to the Barbu Văcărescu – Pipera business district and central Bucharest


Property details


Rooms no.	3
Useable surface	70m²
Apartment type	Apartment
Type of rooms	Semi-independent
Bedrooms no.	2
Kitchens no.	1
Bathrooms no.	1
Building type	Block
Year built	1968
Config	P+11
Floor	9
State	Finished
Elevator	Yes

Amenities

 Equipped kitchen

 Dishwasher

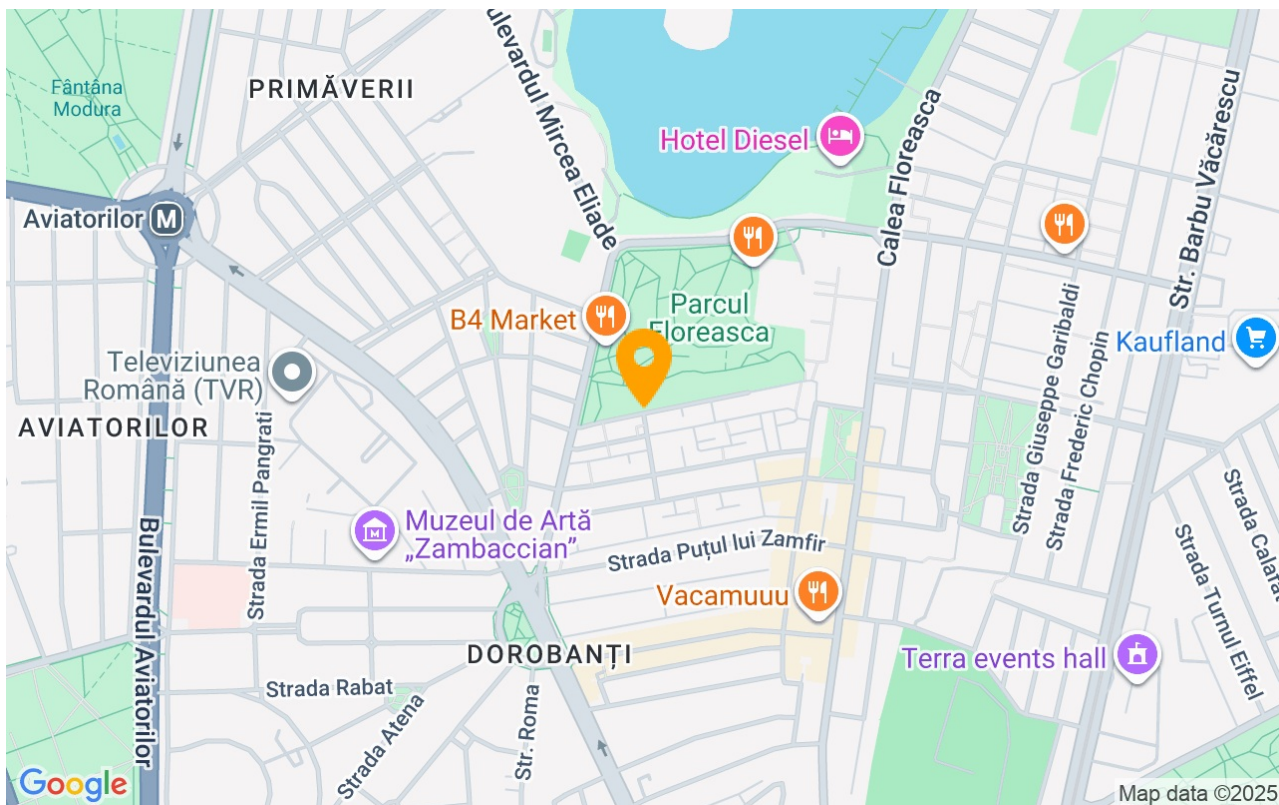
 Furnished

 Private heating

 Air conditioning

 Fireplace

Location



Photos

