



Violetta Tudorache

+40 729 005 624

contact@blissimobiliare.ro
(mailto:contact@blissimobiliare.ro)

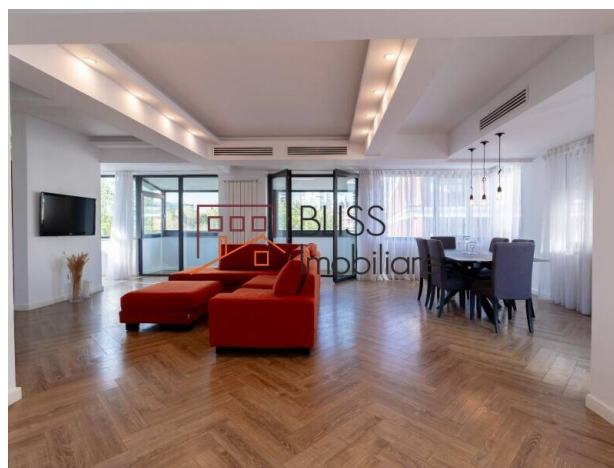
Updated on 18 March 2025

Premium 2-Bedroom Duplex By Lake Floreasca With Panoramic View

1,650 EUR/ month

Web Reference
#123766

📍 Floreasca Nord, Bucharest



<https://www.blissimobiliare.ro/en/apartment-duplex-2-bedrooms-for-rent-floreasca-barbu-vacarescu-bucharest-123766> (<https://www.blissimobiliare.ro/en/apartment-duplex-2-bedrooms-for-rent-floreasca-barbu-vacarescu-bucharest-123766>)

Description

Discover a premium duplex with 3 separate rooms in one of Bucharest's top locations—right on the shore of Lake Floreasca and close to the Caro complex. With a generous total area of 183 sqm, this apartment is the ideal choice for those who value elegance, comfort, and proximity to nature.

Elegant Home Close To Nature And Major Amenities

Features and Interior Design

- **Total Area:** 183.54 sqm, including 146.45 sqm of usable space, 23.69 sqm of uncovered terraces, and a 13.4 sqm underground **garage**.
- **Layout:** Duplex located on the 4th and 5th floors, with a segmented design for enhanced privacy and comfort.
- **Terraces:** 3 spacious terraces—one covered and two open—ideal for relaxation and outdoor gatherings.
- **Parking:** One dedicated underground parking space plus additional above-ground parking spaces by the building, with barrier access for extra security.

Luxury Finishes and Amenities

This duplex features high-end finishes, carefully chosen for sophistication and durability:

- **Bathrooms with marble** and high-quality Kludi fixtures.
- **Elegant Katy Paty switches** and Flos lighting fixtures that enhance the luxurious ambiance.
- **Herringbone wood flooring** that brings a classic and refined touch.

Location and View

- **Panoramic View:** Enjoy stunning views of both the green area around the Caro complex and Lake Floreasca, creating a peaceful and pleasant atmosphere.
- **Proximity to Key Points of Interest:** Located in Floreasca, close to Caro Hotel, the apartment provides easy access to restaurants, parks, and leisure areas, as well as quick access to the main thoroughfares of the city's northern area.




Fully Furnished and Equipped

The apartment is fully furnished and equipped, ready for immediate occupancy, with a modern and practical design that meets the needs of the most refined tenants.

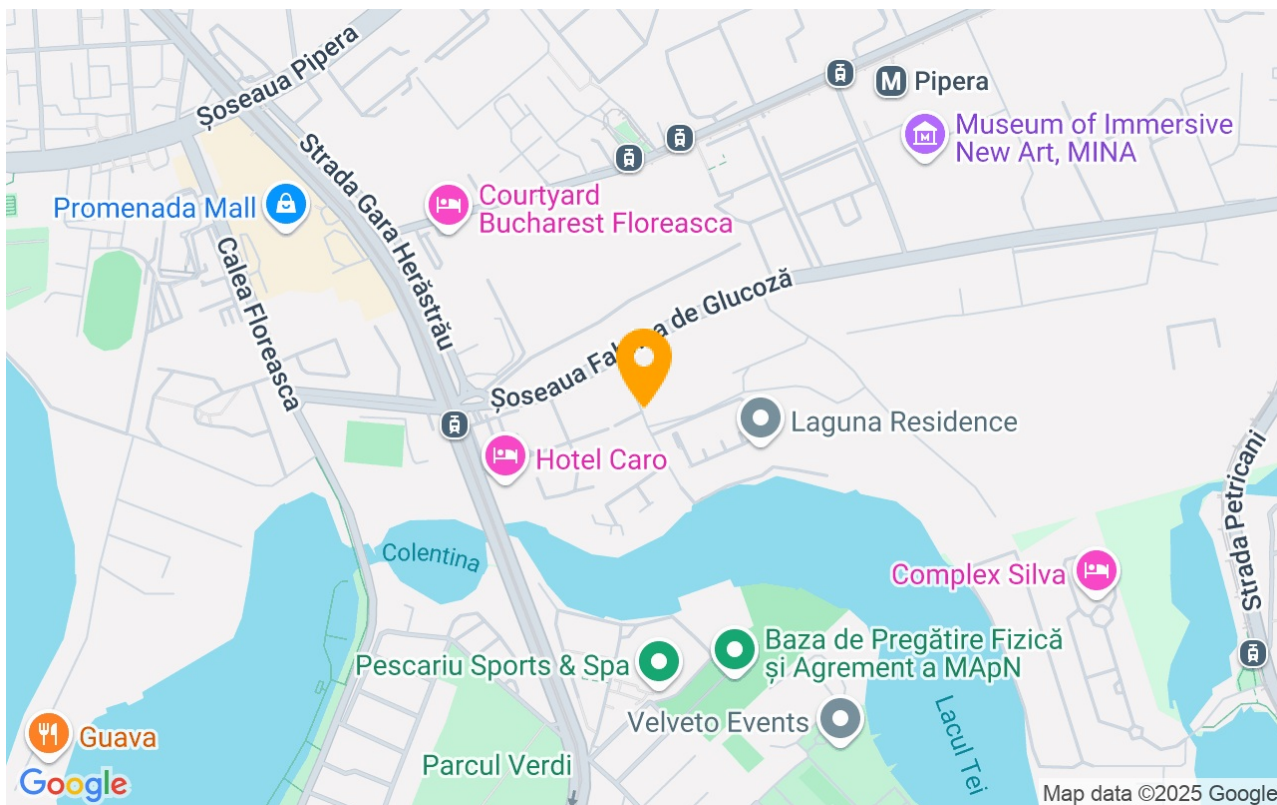
Property details

| | |
|-----------------------|------------------|
| Rooms no. | 3 |
| Useable surface | 146m² |
| Constructed surface | 184m² |
| Apartment type | Duplex apartment |
| Type of rooms | Independent |
| Bedrooms no. | 2 |
| Kitchens no. | 1 |
| Bathrooms no. | 2 |
| Building type | Block |
| Year built | 2006 |
| Config | 1S+P+4 |
| Floor | 4 |
| Balconies no. | 3 |
| State | Finished |
| Elevator | Yes |
| Parking inside | 1 |
| Earthquake risk class | Unclassified |

Amenities

-  Equipped kitchen
-  Furnished
-  Private heating

Location



Photos

