



**Violetta Tudorache**

+40 729 005 624

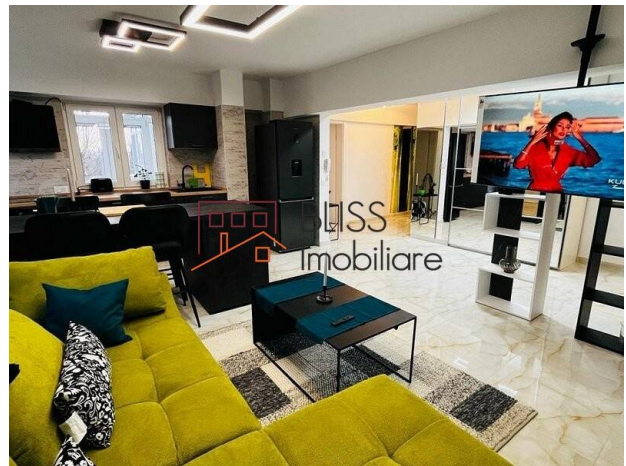
contact@blissimobiliare.ro  
(mailto:contact@blissimobiliare.ro)

Updated on 16 October 2025

## 2-Bedroom Apartment in Herăstrău - Elena Văcărescu Area

Web Reference  
**#121393**

📍 Baneasa Herastrau, Bucharest



<https://www.blissimobiliare.ro/en/apartment-2-bedrooms-for-rent-herastrau-nordului-bucharest-121393>  
(<https://www.blissimobiliare.ro/en/apartment-2-bedrooms-for-rent-herastrau-nordului-bucharest-121393>)

### Description

**2-Bedroom Apartment in the Herăstrău Area - 86 sqm, Fully Renovated, Luxuriously Furnished and Equipped**

## Two Bedrooms, Two Bathrooms, Prime Location Near the Park

Discover an elegant and spacious apartment, recently renovated, located in one of the most sought-after residential areas in northern Bucharest – Elena Văcărescu / Șoseaua Nordului, just steps away from Herăstrău Park and the lake. Ideal for families or professionals who value urban comfort, tranquility, and easy access to green spaces and premium facilities.

### Modern Design and Smart Layout

With a usable area of 86 sqm, the apartment is fully detached and features:

- Generous living room with dining area, harmoniously integrated into an open space with a fully equipped kitchen
- Master bedroom with en-suite bathroom and high-quality furniture

- Second bedroom or office, served by a modern secondary bathroom
- Entrance hallway and intelligently arranged storage spaces
- Two large balconies enclosed with thermopane windows – perfect for relaxation or utility purposes

### **Premium Finishes and Luxury Furnishings**

- Fully furnished and equipped with state-of-the-art appliances
- Modern finishes in neutral tones and elegant textures
- Thermopane windows, high-quality hardwood flooring and tiles
- Contemporary design with a cohesive layout and abundant natural light

### **Excellent Location - Elena Văcărescu / Șoseaua Nordului**

Set in an exclusive neighborhood, the apartment offers quick access to:

- Herăstrău Park and Lake – ideal for walks, sports, and relaxation
- Sports courts and children's playgrounds
- Restaurants, cafes, fitness centers, and international schools
- Barbu Văcărescu – Pipera business district and Promenada Mall
- Public transportation, quick access to DN1 and Otopeni Airport



Property details

Rooms no.	3
Useable surface	86m²
Apartment type	Apartment
Type of rooms	Independent
Type of comfort	Comfort 1
Bedrooms no.	2
Kitchens no.	1
Bathrooms no.	2
Building type	Block
Year built	1986
Config	P+7
Floor	4
Balconies no.	2
State	Finished
Elevator	Yes
Earthquake risk class	Unclassified

Amenities



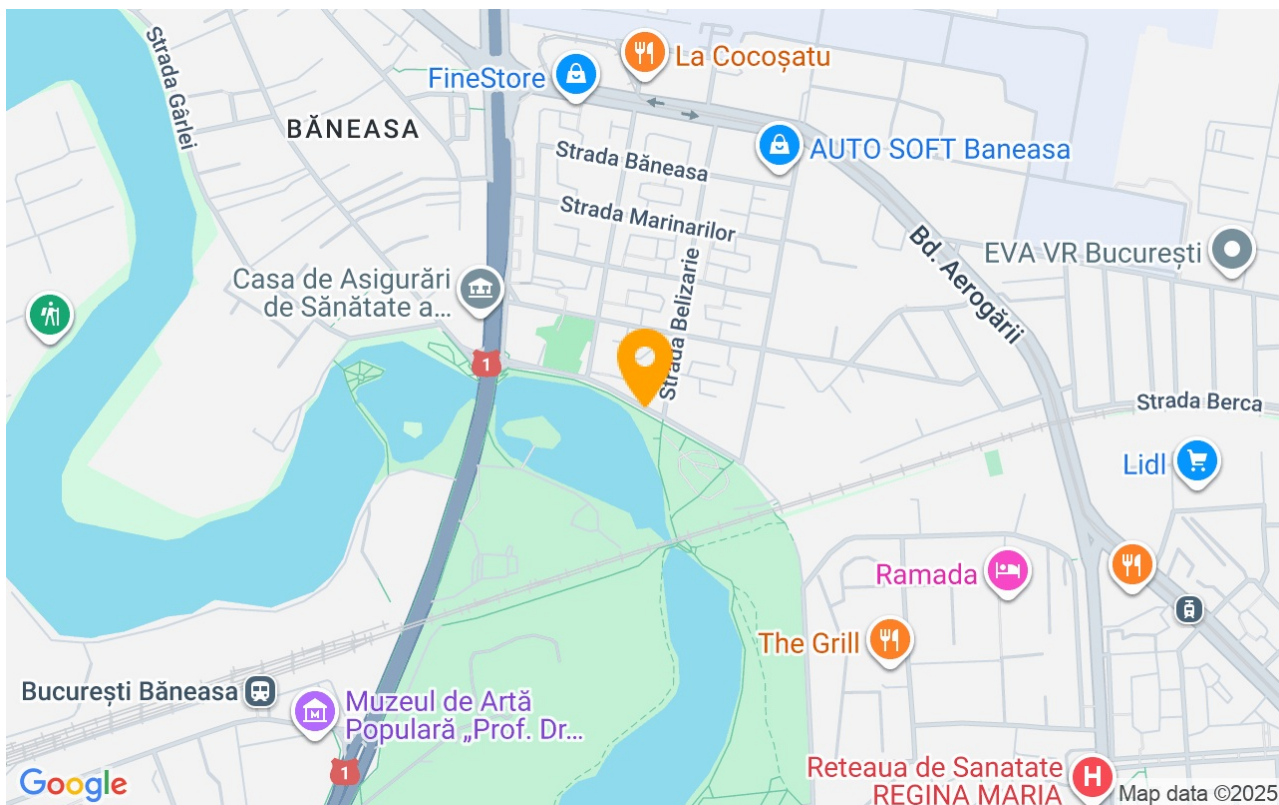
Equipped kitchen



Furnished



## Location



## Photos

