

**Violetta Tudorache**

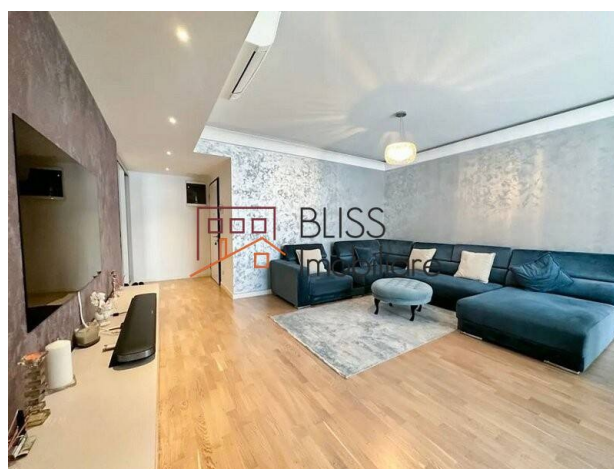
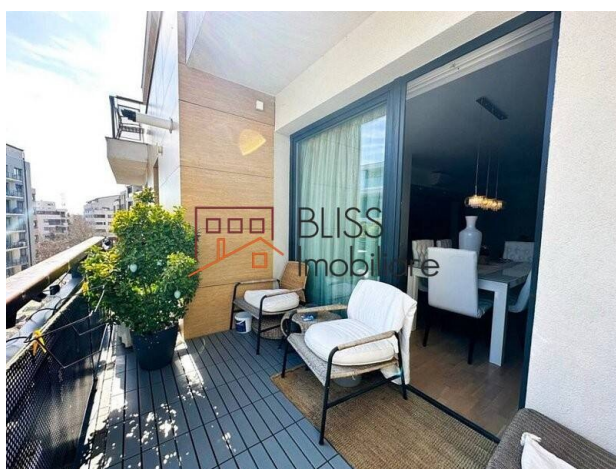
☎ +40 729 005 624

✉ contact@blissimobiliare.ro
(mailto:contact@blissimobiliare.ro)

Updated on 12 December 2025

Elegant 3-Bedroom Apartment near Herăstrău Park

📍 Lighthouse Residence, Herastrau, Bucharest

2,400 EUR/ month
585,000 EURWeb Reference
#120714

<https://www.blissimobiliare.ro/en/apartment-3-bedrooms-for-rent-herastrau-nordului-bucharest-120714>
(<https://www.blissimobiliare.ro/en/apartment-3-bedrooms-for-rent-herastrau-nordului-bucharest-120714>)

Description

Elegant 3-Bedroom Apartment in Lighthouse Residence - 105 sqm, Luxury Furnished, Storage & Parking

105 sqm, luxury furnished with storage, parking and 2 balconies

We are delighted to present this elegant and spacious apartment, located in the premium Lighthouse Residence complex, one of Bucharest's most desirable developments, just a few steps from Herăstrău Park.

With a usable area of 105 sqm, situated on the 4th floor of a modern 2018 building, this property offers refined interiors, premium finishes, and abundant natural light – ideal for families or professionals seeking comfort and style.

Layout and Features:

- Generous living room with dining area and access to the balcony;
- Three elegant bedrooms, tastefully decorated;
- Two modern bathrooms with high-end finishes;
- Fully furnished and equipped kitchen;

- Two balconies – perfect for morning coffee or relaxation;
- Storage room and outdoor parking space included;
- Individual gas heating system and air conditioning units in every room;

Benefits and Location:

- Modern and well-maintained residential complex (built in 2018);
- Secured access and high-quality common areas;
- Quick access to Aurel Vlaicu metro station, DN1, and Otopeni Airport;

Prime Location: Herăstrău - Nordului:






Ideally positioned near Herăstrău Park, this apartment provides the perfect balance between urban accessibility and refined residential comfort.

A premium property that combines elegance, functionality, and tranquility.

Property details

Rooms no.	4
Useable surface	105m²
Constructed surface	116m²
Apartment type	Apartment
Type of rooms	Semi-independent
Bedrooms no.	3
Kitchens no.	1
Bathrooms no.	2
Building type	Block
Year built	2018
Config	2S+P+6
Floor	4
Balconies no.	2
State	Finished
Elevator	Yes
Parking outside	1
Storage no.	1

Amenities

-  Equipped kitchen
-  Dishwasher
-  Furnished
-  Private heating
-  Air conditioning

Location



Photos

