



**Violetta Tudorache**

+40 729 005 624

contact@blissimobiliare.ro  
(mailto:contact@blissimobiliare.ro)

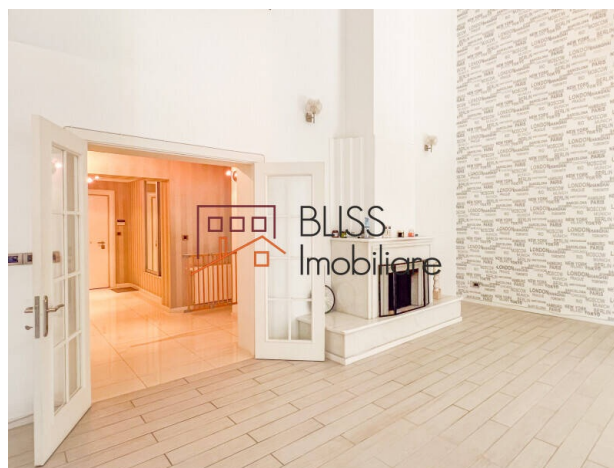
Updated on 22 December 2025

## 5-Bedroom Villa Fully Furnished With Garden And Private Garage

📍 Baneasa Residential Park (Butterfly), Iancu  
Nicolae British School Bucharest, Bucharest / Ilfov

**3,000 EUR +VAT / month**  
**1,100,000 EUR**

Web Reference  
**#120472**



<https://www.blissimobiliare.ro/en/villa-4-bedrooms-for-rent-iancu-nicolae-pipera-bucharest-ilfov-120472> (<https://www.blissimobiliare.ro/en/villa-4-bedrooms-for-rent-iancu-nicolae-pipera-bucharest-ilfov-120472>)

### Description

This elegant and fully equipped villa is located in Băneasa Residential Park (Butterfly Complex), one of the most sought-after residential communities in northern Bucharest. Surrounded by nature and close to international schools, the property offers the perfect blend of privacy, comfort, and accessibility.

## Located In One Of The Most Desired Residential Areas Of Bucharest

### About the property:

The villa is fully furnished and equipped, featuring modern design and high-quality materials throughout. The layout is functional and spacious, ideal for family living and active lifestyles.

### Layout:

The ground floor includes an entrance hallway, a fully equipped fitness room, sauna, guest bedroom, home office, spacious kitchen, and an impressive living room with a 6-meter-high ceiling.

The upper floor features a master bedroom with en-suite bathroom and walk-in dressing room, plus two additional bedrooms served by a separate bathroom.

The attic includes a dedicated storage area.

**Land and exterior features:**

The property sits on a 650 sqm plot and includes a private garage and four parking spaces, with additional guest parking available. Its location within the residential compound is ideal, offering both privacy and convenient access to the complex's shared facilities.

**Location and accessibility:**








Băneasa Residential Park is a well-maintained, secure compound located near Băneasa Forest and some of the top international schools in Bucharest. The area provides easy access to shopping centers, business hubs, and Otopeni Airport, making it perfect for families seeking a high-end lifestyle in northern Bucharest.



Property details

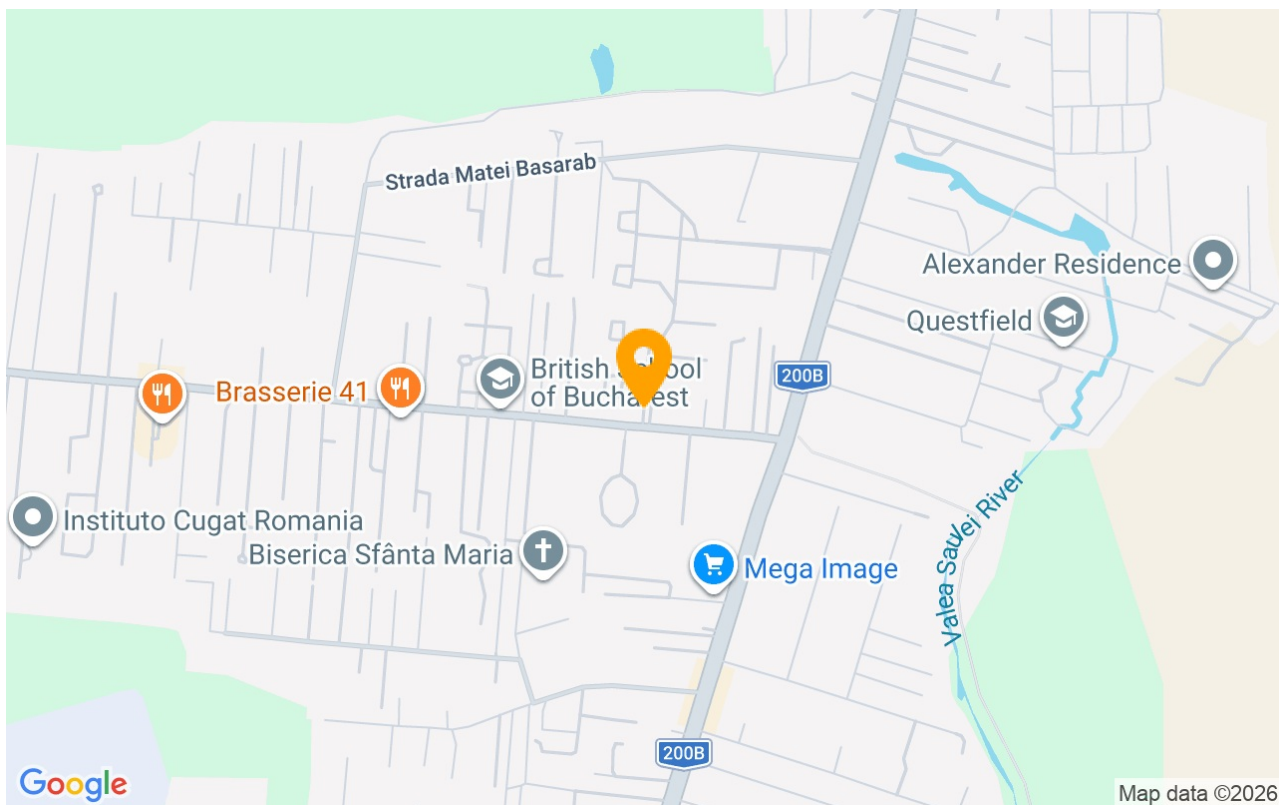
Rooms no.	6
Useable surface	260m²
Constructed surface	350m²
Bedrooms no.	4
Kitchens no.	1
Bathrooms no.	3
Building type	Villa
Year built	2005
State	Finished
Total land	650m²
Print	175m²
Parking inside	1
Parking outside	4
Common service charges	250.00 EUR

Amenities

-  Equipped kitchen
-  Dishwasher
-  Not furnished
-  Private heating
-  Suitable for office
-  Air conditioning
-  Fireplace



## Location



## Photos

