



Violetta Tudorache

+40 729 005 624

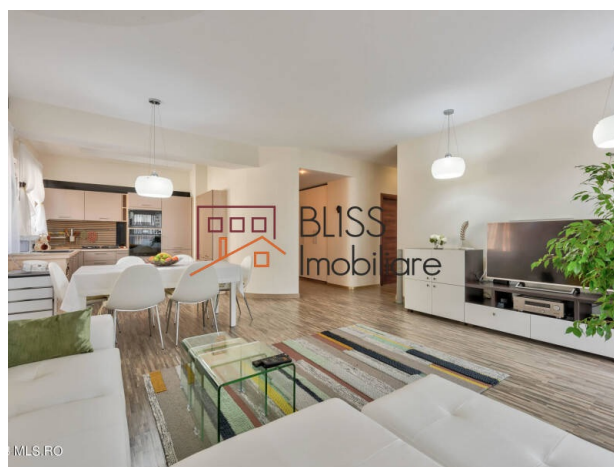
contact@blissimobiliare.ro
(mailto:contact@blissimobiliare.ro)

Updated on 16 July 2025

2-Bedroom Apartment with Parking Space Included

Web Reference
#116914

📍 Carina Residence, Iancu Nicolae Jolie Ville ,
Bucharest / Ilfov



<https://www.blissimobiliare.ro/en/apartment-2-bedrooms-for-rent-iancu-nicolae-pipera-bucharest-ilfov-116914> (<https://www.blissimobiliare.ro/en/apartment-2-bedrooms-for-rent-iancu-nicolae-pipera-bucharest-ilfov-116914>)

Description

Prime Location - Iancu Nicolae, Pipera

Prime Location On Iancu Nicolae Near International Schools

This bright and spacious 2-bedroom apartment is ideally located in the highly sought-after Iancu Nicolae area, in the northern part of Bucharest. Within walking distance to:

- Jolie Ville Galleria
- Cambridge School of Bucharest
- Mark Twain International School
- Just a 5-minute drive to:
 - French School
 - British School of Bucharest
 - Băneasa Shopping Area (Feeria, IKEA, Băneasa Mall)

Iancu Nicolae is an excellent residential area for families, with easy access to top international schools and lifestyle amenities.

Functional Layout & Bright Living Spaces

This apartment offers a smart and efficient layout, with well-lit interiors and a warm, welcoming atmosphere:

- Spacious and bright living room with dining area
- Fully equipped separate kitchen
- 2 comfortable bedrooms, including a master bedroom
- 2 modern bathrooms with quality finishes
- Balcony with open green views

Comfort and Safety in a Modern Residential Complex

The apartment is part of a well-maintained building offering a safe and peaceful environment, ideal for families:

- Secured access
- Clean, well-kept common areas
- Parking options available

Key Features





Prestigious area, close to international schools and major shopping centers

- Bright apartment with modern finishes and optimal layout
- Ideal for families or couples seeking functionality and elegance
- Easy access to DN1, Otopeni Airport, and Pipera business hub

Property details

Rooms no.	3
Useable surface	97m²
Constructed surface	112m²
Apartment type	Apartment
Type of rooms	Independent
Type of comfort	Comfort 1
Bedrooms no.	2
Bathrooms no.	2
Building type	Block
Year built	2009
Config	1S+P+5
Floor	3
Balconies no.	1
State	Finished
Elevator	Yes
Parking inside	1

Amenities

-  Equipped kitchen
-  Not furnished
-  Building heating
-  Air conditioning

Location



Photos

