



Isfahan Doekhie

+40 729 896 897

contact@blissimobiliare.ro
(mailto:contact@blissimobiliare.ro)

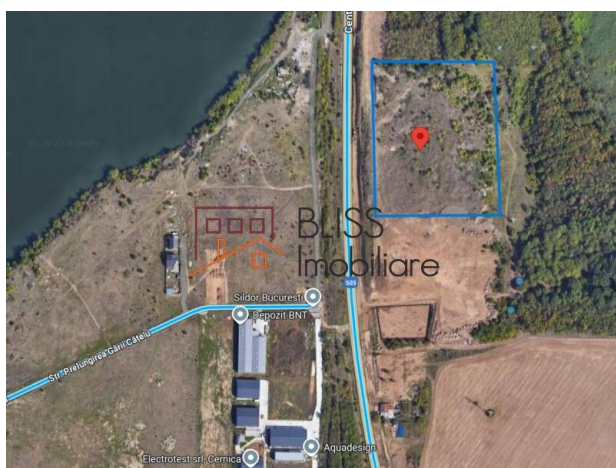
Updated on 8 December 2025

Land 24,800 m²;

Industiilor, Bucharest

1,984,000 EUR
80 EUR / m²

Web Reference
#906244



<https://www.blissimobiliare.ro/index.php/en/land-for-sale-industiilor-bucharest-906244>
(<https://www.blissimobiliare.ro/index.php/en/land-for-sale-industiilor-bucharest-906244>)

Description

Industrial/Logistics Land with 164 m Frontage - Cernica, Bucharest Ring Road

A rare opportunity to acquire a strategically positioned plot with high development potential, located directly on the Cernica section of Bucharest's Ring Road, just 2 km from the A2 Sun Motorway. This prime location offers excellent connections to Bucharest, the Port of Constanța, and major national and international trade corridors.

Key Features:

- Frontage: 164 linear meters directly on the Ring Road
- Buildable area as per PUZ:
- Industrial hall of 10,000 sqm
- 2,000 sqm of office space
- Dedicated parking for logistics operations
- Zoning: Industrial / Logistics
- Utilities available: Gas, electricity (with the possibility to upgrade for industrial consumption)

Competitive Advantages:

- Excellent location for logistics centers, warehouses, distribution hubs, or industrial production
- Rapidly developing area with strong potential for medium- to long-term capital growth
- Approved PUZ – saving significant time in the construction permitting process

Strategic Positioning:

- 0 km from the Cernica section of the Ring Road (direct access)
- 2 km from the A2 Sun Motorway
- Fast connection to the A3 Motorway and DN1 via the Ring Road
- Efficient access to Bucharest's commercial and industrial zones in both the capital and Ilfov County

This property is an ideal choice for investors and developers seeking a premium location for logistics or industrial operations, with all documentation in place for rapid project initiation.

Land details

Land type	Constructible land
Size	24,800 m²
Land usage coefficient	0.6
Percentage of occupation	46%
Street openings	164 m

Utilities

-  Electricity
-  Natural gas

Location

