



**Isfahan Doekhie**

+40 729 896 897

contact@blissimobiliare.ro  
(mailto:contact@blissimobiliare.ro)

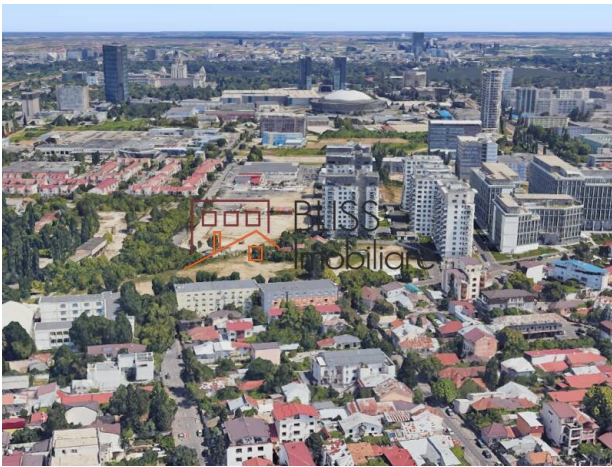
Updated on 24 May 2023

## urban land of 399 mp excellent for a residential project

Piata Chibrit, Bucharest

**390,000 EUR**  
**977 EUR / m<sup>2</sup>**

Web Reference  
**#905207**



<https://www.blissimobiliare.ro/index.php/en/land-for-sale-domenii-1-mai-grivitei-bucharest-905207>  
(<https://www.blissimobiliare.ro/index.php/en/land-for-sale-domenii-1-mai-grivitei-bucharest-905207>)

### Description

BLISS Imobiliare presents to you an urban land with an area of 399 sqm, located in the area of Piața Chibrit. The land has 9.7 ml opening to the street.

## A 20-minute drive from the Arcul de Triumf and Herăstrău Park.

The construction regime is Gf+2+1RF, with a maximum POT of 70% and a maximum allowed CUT of 3.0 sqm ADC/sqm land. It is excellent for a residential project.

Nearby are supermarkets (Mega Image, Lidl, Profi), Piata Chibrit, Piața Mureș, Bld. Expozitiei, Romexpo, University of Agronomic Sciences, medical centers, means of public transport.



## Land details

<b>Land type</b>	Constructible land
<b>Size</b>	399 m <sup>2</sup>
<b>Land usage coefficient</b>	3
<b>Percentage of occupation</b>	70%
<b>Street openings</b>	
<b>Road type</b>	Asphalt
<b>Protected area</b>	No

## Utilities

💡 Electricity

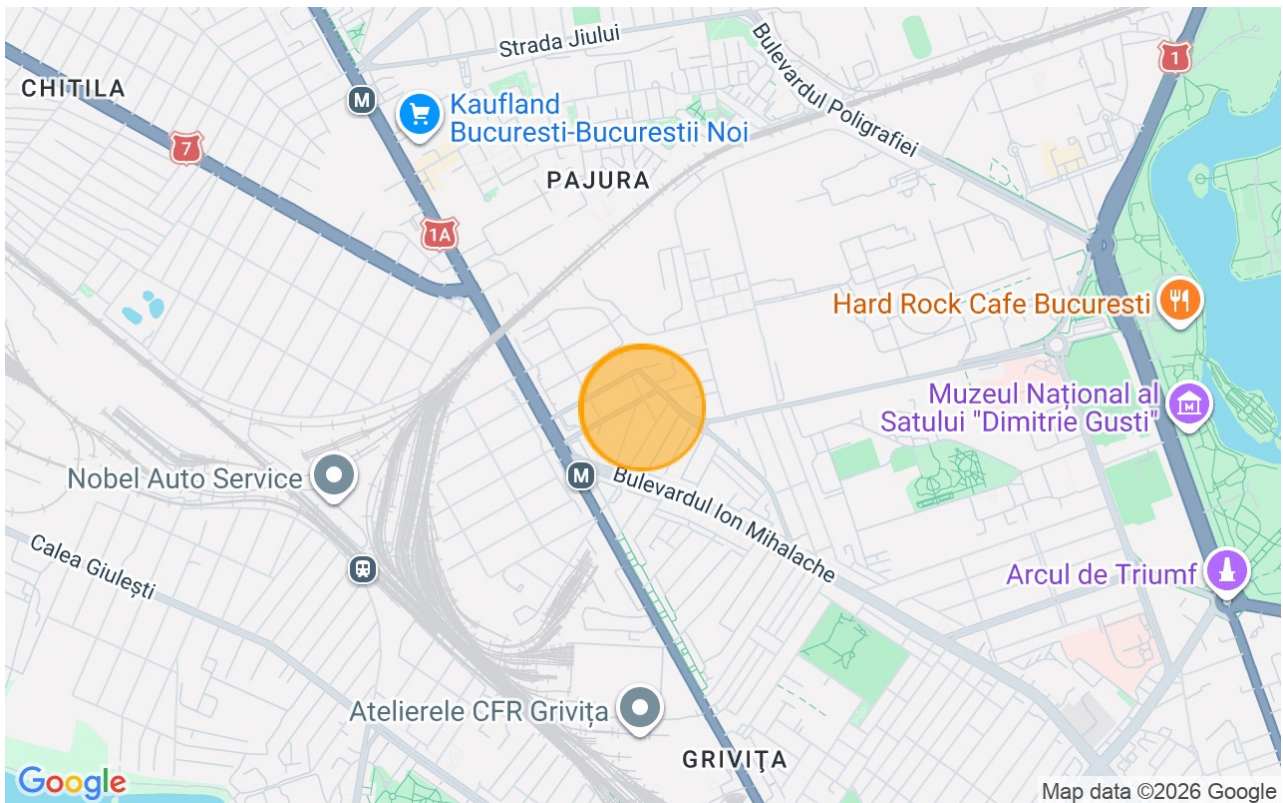
🚰 Water

🔥 Natural gas

🚰 Sewage

📶 Telecom

## Location





## Photos

