



**Isfahan Doekhie**

+40 729 896 897

contact@blissimobiliare.ro  
(mailto:contact@blissimobiliare.ro)

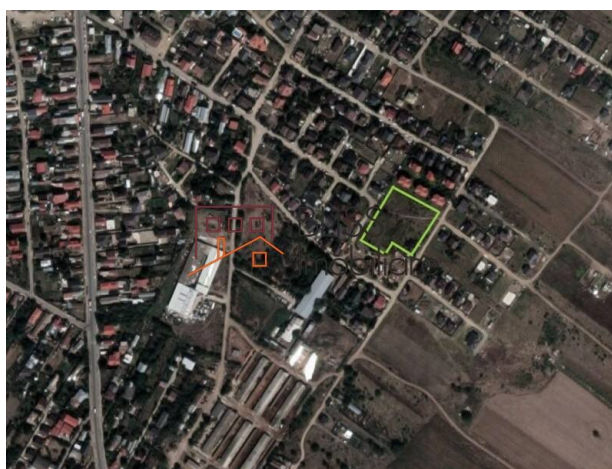
Updated on 23 September 2025

## Superb 3.941 m<sup>2</sup> buildable land in residential development area

**249,500 EUR**  
**63 EUR / m<sup>2</sup>**

Web Reference  
**#904841**

Comuna Berceni, Bucharest / Ilfov



<https://www.blissimobiliare.ro/index.php/en/land-for-sale-comuna-berceni-bucharest-ilfov-904841>  
(<https://www.blissimobiliare.ro/index.php/en/land-for-sale-comuna-berceni-bucharest-ilfov-904841>)

### Description

#### 3,941 sqm Intravilan Land - Berceni, Vasile Goldiș Area

## Excellent land for residential real estate investment and development

BLISS Imobiliare presents for sale a prime intravilan land plot with high development potential, located in Comuna Berceni, Vasile Goldiș area – one of the fastest-growing residential zones in the southern Bucharest area.

### Strategic Location

- Only 6 minutes from the proposed extension of Metro Line 2, ensuring excellent future connectivity and adding strong investment value.
- Bulevardul 1 Mai is just 550 m away, providing direct access to the area's main infrastructure.
- Immediate proximity to School No. 1, Kindergarten No. 1 (with extended program), shops, and public transport (the main bus line in Berceni and maxi-taxi station).

### Technical Details

- Total land area: 3,941 sqm
- Two generous street frontages: 55 m and 34 m, allowing flexibility in future project design
- Utilities available in the area: electricity, gas, telecommunications

## **Investment Highlights**

- Located in a rapidly expanding residential development area with growing demand for modern housing
- Excellent connectivity via both existing infrastructure and the planned metro line
- Suitable for residential projects (individual villas, duplexes, or small compounds) as well as mixed-use developments

View location on <https://goo.gl/maps/EcPb2hBFkGwXApfj7> (<https://goo.gl/maps/EcPb2hBFkGwXApfj7>)




## Land details

<b>Land type</b>	Constructible land
<b>Size</b>	3,941 m <sup>2</sup>
<b>Street openings</b>	
<b>Road type</b>	Gravel
<b>Protected area</b>	No

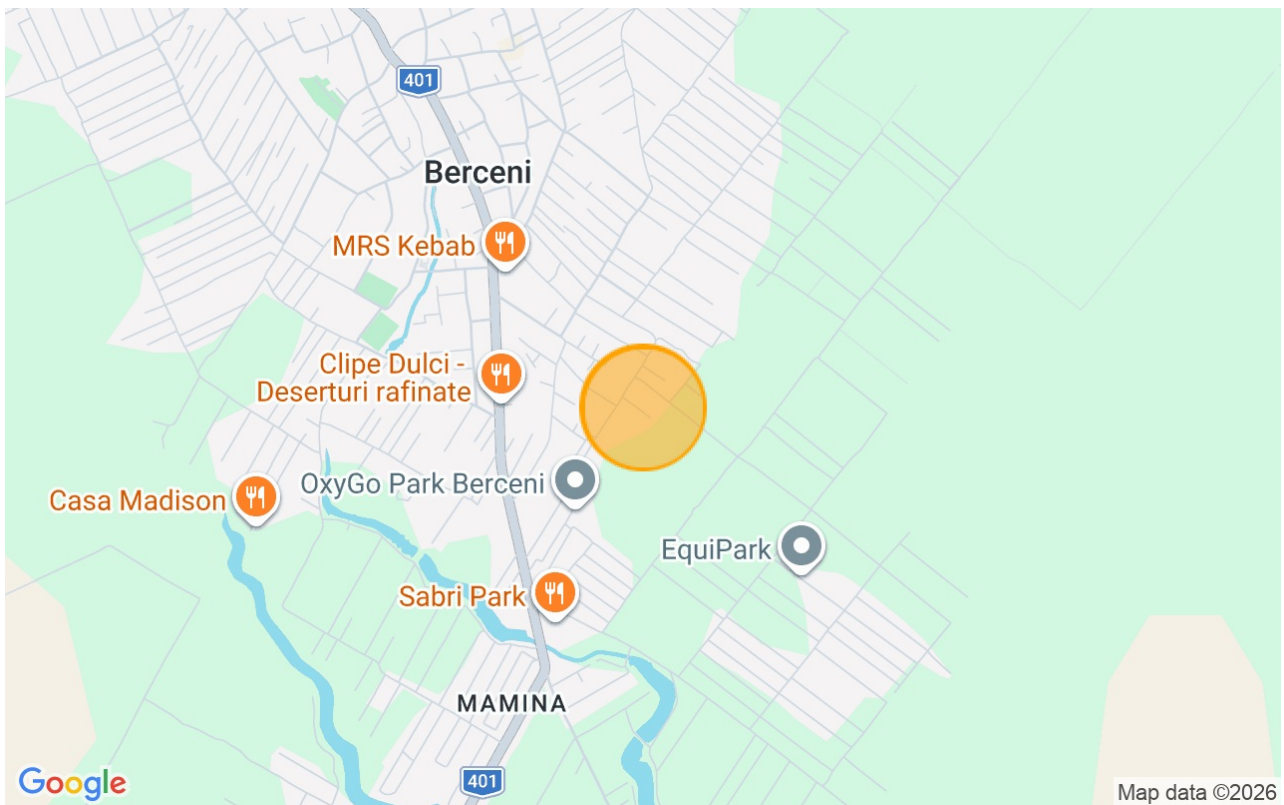
## Utilities

 Electricity

 Natural gas

 Telecom

## Location





**Photos**

