



**Isfahan Doekhie**

+40 729 896 897

contact@blissimobiliare.ro  
(mailto:contact@blissimobiliare.ro)

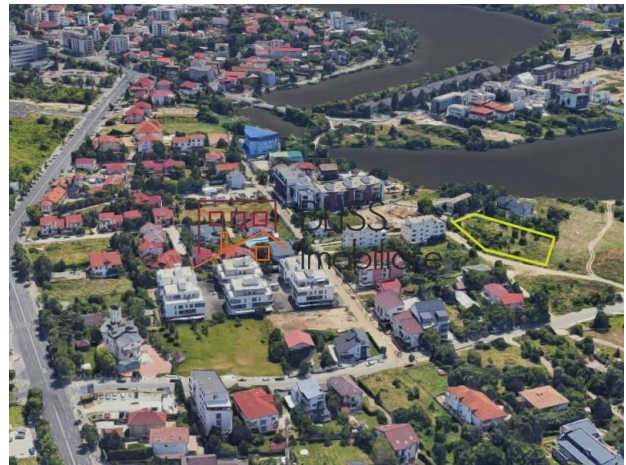
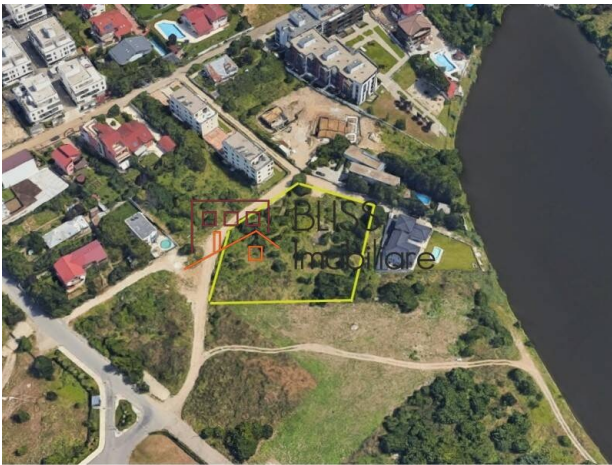
Updated on 3 February 2026

## **Buildable land 3.150 m<sup>2</sup> sector 1 Bucharest Greenlake**

Sisesti, Bucharest

**1,102,500 EUR**  
**350 EUR / m<sup>2</sup>**

Web Reference  
**#900730**



<https://www.blissimobiliare.ro/index.php/en/land-for-sale-baneasa-sisesti-jandarmerie-straulesti-sector-1-bucharest-900730> (<https://www.blissimobiliare.ro/index.php/en/land-for-sale-baneasa-sisesti-jandarmerie-straulesti-sector-1-bucharest-900730>)

### **Description**

3,147 sqm Buildable land located in the northern part of Bucharest, with access from Gheorghe Ionescu Sisesti Road and view to Grivita Lake. Sector 1 Bucharest near Greenlake and the King's Oak International School.

## **Area in full development for middle class and luxury homes**

The land is included partially in subzone L1d - small individual dwellings, with a maximum height of GF + 2, CUT- 0.70, POT -20%.

The property exists of two neighbouring plots that can be combined. One of 1.600 sqm and one of 1.547sqm.

The land has openings of 45 and 75 sqm on two streets.



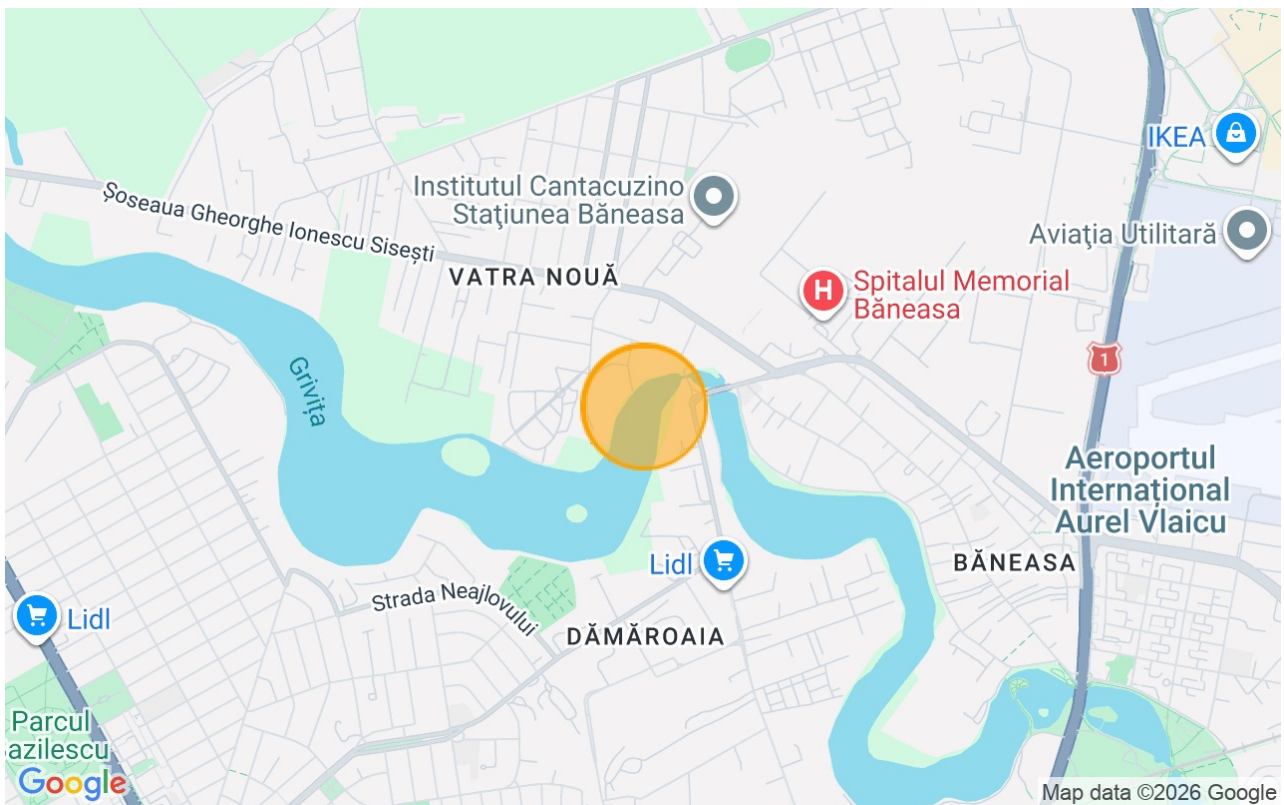
## Land details

<b>Land type</b>	Constructible land
<b>Size</b>	3,147 m <sup>2</sup>
<b>Land usage coefficient</b>	0.7
<b>Percentage of occupation</b>	20%
<b>Street openings</b>	43 m / 75 m
<b>Road type</b>	Gravel
<b>Protected area</b>	No

## Utilities

 Electricity

## Location





**Photos**

