



Violetta Tudorache

+40 729 005 624

contact@blissimobiliare.ro
(mailto:contact@blissimobiliare.ro)

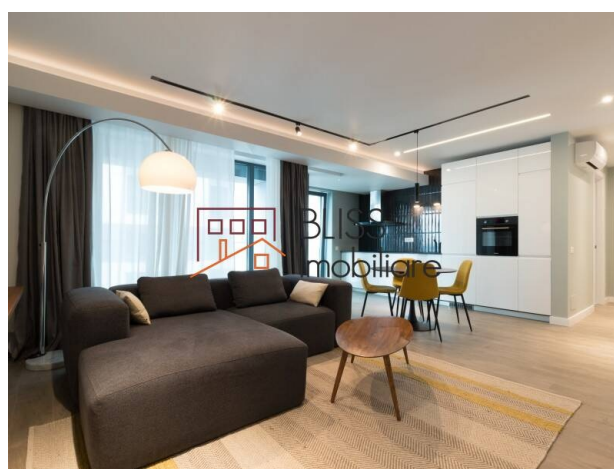
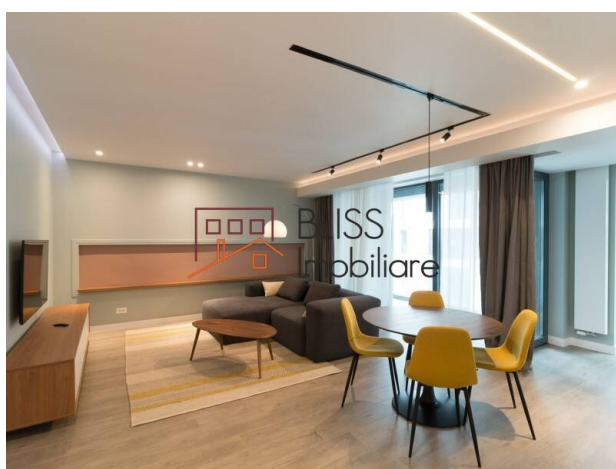
Updated on 3 September 2025

Apartment with premium quality finishes in Pipera

📍 Cloud9 Residence, Aviatiei Manastirea
Cristiana, Bucharest

850 EUR/ month

Web Reference
#94572



<https://www.blissimobiliare.ro/index.php/en/apartment-1-bedroom-for-rent-aviatiei-promenada-mall-metro-pipera-bucharest-94572> (<https://www.blissimobiliare.ro/index.php/en/apartment-1-bedroom-for-rent-aviatiei-promenada-mall-metro-pipera-bucharest-94572>)

Description

1-bedroom apartment located in the residential complex Cloud9 Residence.

Apartment located in the residential complex Cloud9 Residence, Pipera

The apartment is fully furnished and equipped based on an architectural project to facilitate an easy move. It also benefits of an underground parking space.

Cloud 9 is the solution for people on the move, who, in addition to the comfort and tranquility of a well-thought-out home, also want a strategic position that can meet the demands of a constantly changing life.

The premium quality level of the materials used, the special attention to detail and finishes, the extraordinary brightness given by the large glazed spaces, the generous space, the intelligent partitioning, the guarantee of a safe construction, all these will make you proud of your home.

The idea of a closed circuit complex and secure access doors to the apartment will give you the same security as if you had your own security and protection service.

You are within walking distance of the main fun attractions in the northern part of Bucharest:

- Promenada Mall
- Marriott Courtyard
- Herastrau park





You are a few minutes walk from the most important business centers in Pipera:

- Sky Tower
- Floreasca Park
- Oregon Park
- Globalworth Plaza
- Green Court Bucharest
- Equilibrium

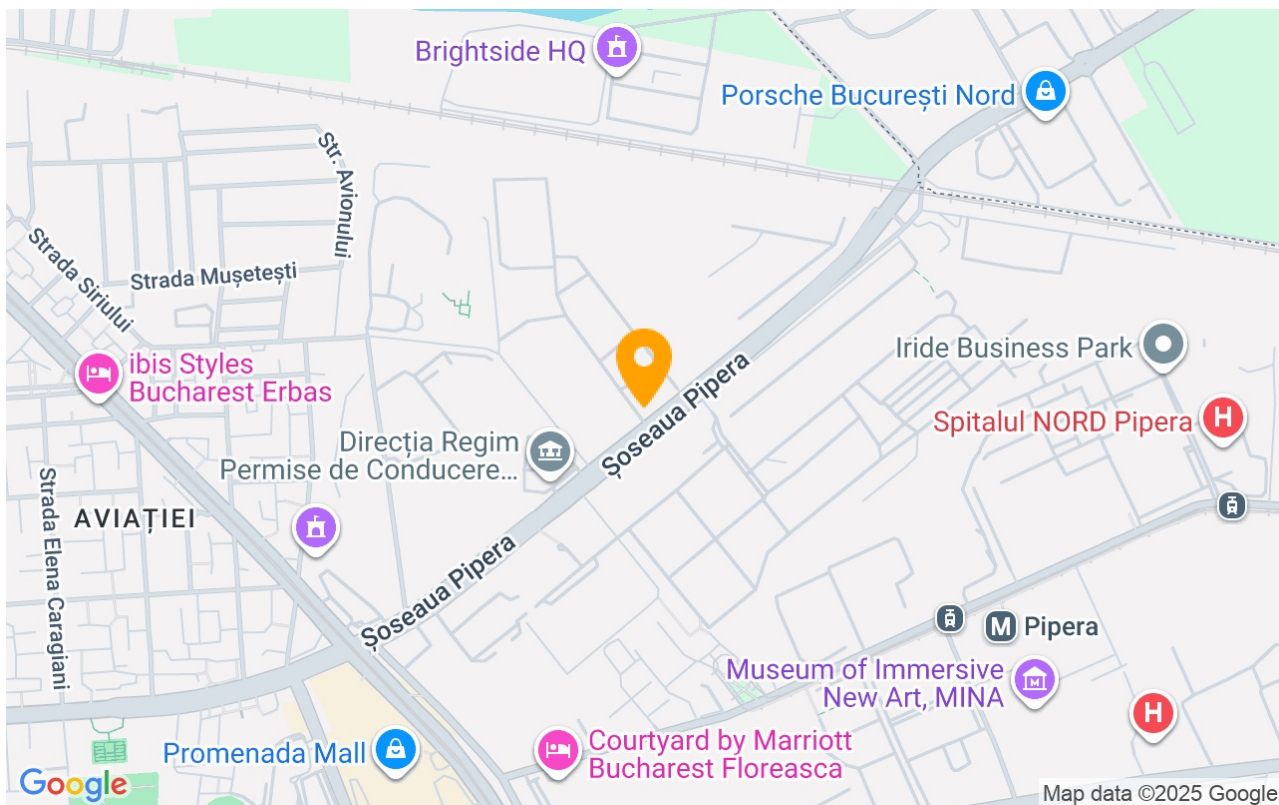
Property details

Rooms no.	2
Useable surface	55m²
Constructed surface	60m²
Apartment type	Apartment
Type of rooms	Independent
Type of comfort	Comfort 1
Bedrooms no.	1
Kitchens no.	1
Bathrooms no.	1
Building type	Block
Year built	2020
Config	2S+P+11
Floor	3
Balconies no.	1
State	Finished
Elevator	Yes
Parking inside	1

Amenities

-  Equipped kitchen
-  Dishwasher
-  Furnished
-  Suitable for office

Location



Photos

