



**Violetta Tudorache**

+40 729 005 624

contact@blissimobiliare.ro  
(mailto:contact@blissimobiliare.ro)

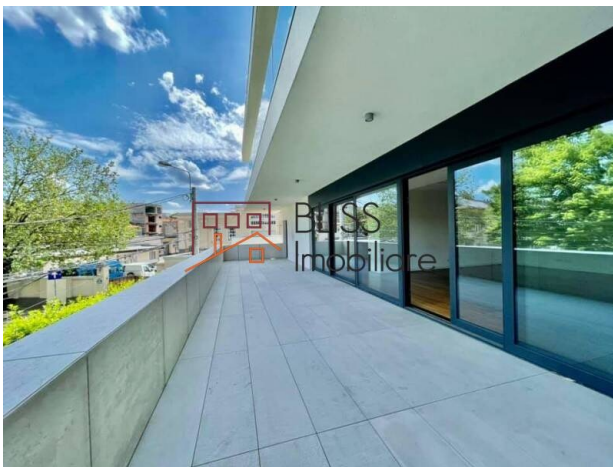
Updated on 25 March 2026

## Luxury 4-Bedroom Residence in a Historic District

Aviatorilor, Bucharest

**4,500 EUR +VAT / month**

Web Reference  
**#93086**



<https://www.blissimobiliare.ro/index.php/en/apartment-4-bedrooms-for-rent-dorobanti-primaverii-kiseleff-aviatorilor-bucharest-93086> (<https://www.blissimobiliare.ro/index.php/en/apartment-4-bedrooms-for-rent-dorobanti-primaverii-kiseleff-aviatorilor-bucharest-93086>)

### Description

#### Luxury 4-Bedroom Residence - Elegance and Space in Kiseleff - Aviatorilor Area

## Modern Comfort and Elegance in The Diplomatic District

We present an exceptional property that redefines premium urban living, strategically located in one of Bucharest's safest and greenest areas: Kiseleff - Aviatorilor. Situated on the 1st floor of a modern building completed in 2015, this impressive residence stands out through its vast spaces, high-end finishes, and remarkable natural light.

#### Vast Space and Detached Layout

With a usable area of 204 sqm, the apartment offers a perfect balance between social areas and private quarters:

- Living Area: A spacious living room, ideal for family dinners or relaxation, flooded with light thanks to the generous windows.
- Sleeping Area: Features 4 large bedrooms, designed to provide maximum comfort for every family member.
- Bathrooms: 4 modern bathrooms and a guest toilet, finished with luxury materials, ensuring full functionality for a large family.

- Terraces: 3 balconies providing private outdoor spaces for moments of tranquility.

### **High-End Amenities and Premium Finishes**

The property is equipped to meet the highest residential demands:

- Kitchen: Fully equipped with modern appliances, including a dishwasher.
- Climate Control: High-performance air conditioning system and building central heating for optimal year-round comfort.
- Parking: Includes 1 indoor parking space in the underground garage, an essential asset in this exclusive neighborhood.
- Building Features: Secured building equipped with an elevator, located on a quiet street away from the noise of main roads.

### **Location: The Aviatorilor Lifestyle Standard**

Positioned between Kiseleff Park and Herăstrău Park, it offers access to the city's finest lifestyle:

- Nature & Culture: Steps away from the city's largest parks and world-class museums.
- Transportation: Quick access to Piața Victoriei and Aviatorilor metro stations.
- Neighborhood: An area characterized by stunning historic buildings, embassies, international schools, and fine-dining restaurants.



## Property details

<b>Rooms no.</b>	5
<b>Useable surface</b>	204m <sup>2</sup>
<b>Constructed surface</b>	270m <sup>2</sup>
<b>Apartment type</b>	Apartment
<b>Type of rooms</b>	Independent
<b>Type of comfort</b>	Comfort 1
<b>Bedrooms no.</b>	4
<b>Kitchens no.</b>	1
<b>Bathrooms no.</b>	4
<b>Toilets no.</b>	1
<b>Building type</b>	Block
<b>Year built</b>	2015
<b>Config</b>	1S+P+5
<b>Floor</b>	1
<b>Balconies no.</b>	3
<b>State</b>	Finished
<b>Elevator</b>	Yes
<b>Parking inside</b>	1

## Amenities

 Equipped kitchen

 Dishwasher

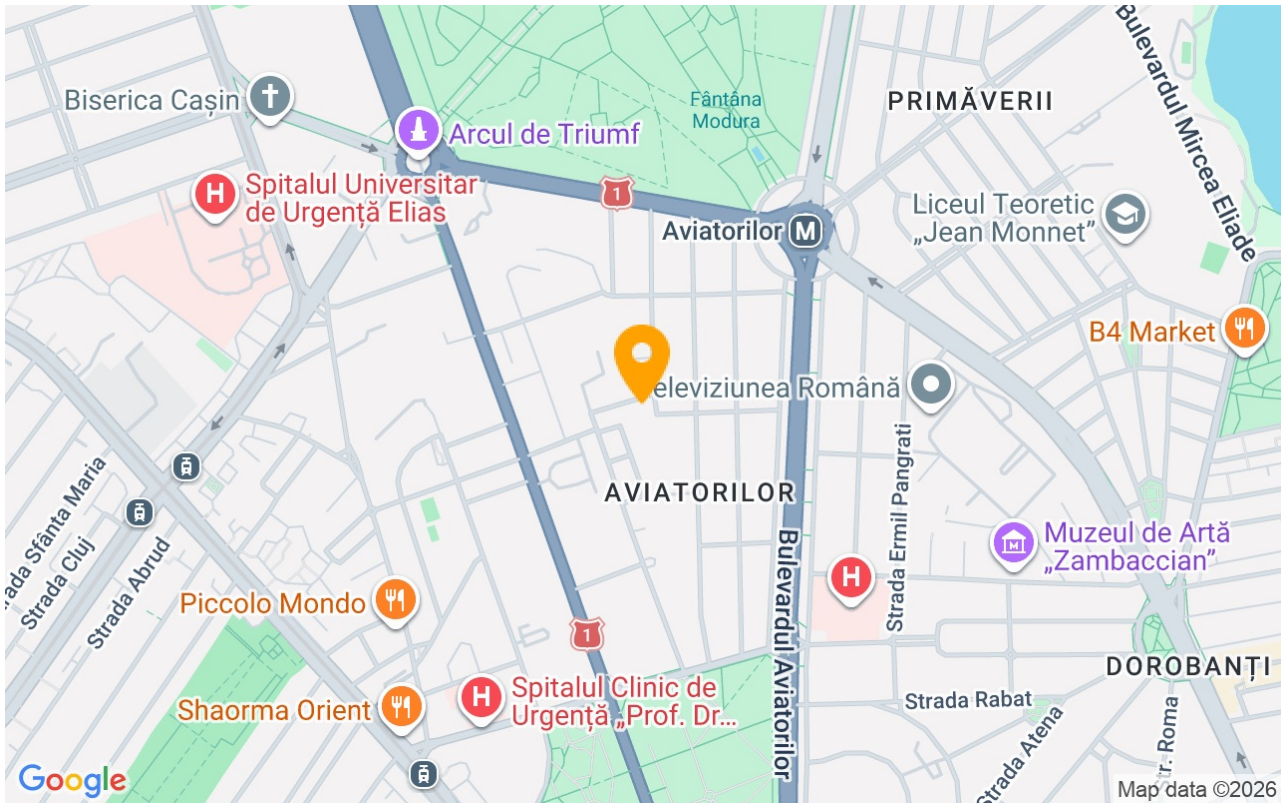
 Not furnished

 Building heating

 Air conditioning



## Location



## Photos

