



Violetta Tudorache

+40 729 005 624

contact@blissimobiliare.ro
(mailto:contact@blissimobiliare.ro)

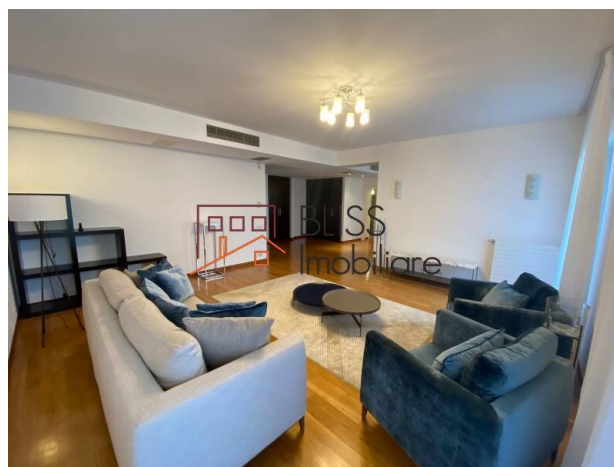
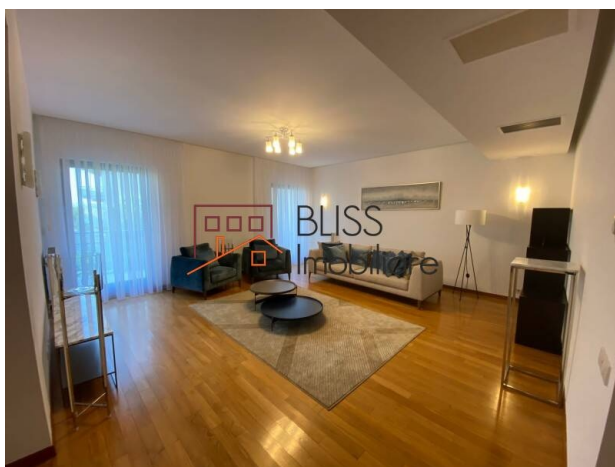
Updated on 20 November 2025

Apartment, 2 bedrooms

📍 Baneasa Rezidential, Iancu Nicolae, Bucharest

Web Reference

#81167



<https://www.blissimobiliare.ro/index.php/en/apartment-2-bedrooms-for-rent-iancu-nicolae-pipera-bucharest-81167> (<https://www.blissimobiliare.ro/index.php/en/apartment-2-bedrooms-for-rent-iancu-nicolae-pipera-bucharest-81167>)

Description

Discover this furnished 2-bedroom apartment in the Baneasa Mall area, situated on the 1st floor of a 5-story building (1/S+P+4E). It features 2 underground parking spaces and a storage unit. With a total area of 125 sqm and a 32 sqm terrace, this apartment offers a spacious living room with dining area and balcony access, a fully equipped kitchen, two bedrooms (one with a dressing room), two bathrooms, and an additional balcony. Quality amenities include air conditioning/thermostats, central heating with thermostats and radiators, and elegant finishes such as marble cladding, parquet/marble floors, and thermal-insulated windows. With thermal efficiency class A and separately metered utilities (gas, water, electricity), this apartment represents an ideal living space in a prime location.

Equipped with Quality Finishes and Spacious Layout

The property benefits from a strategic location with easy access to main roads and public transport.

With one of the largest shopping centers in Bucharest nearby, you'll enjoy quick access to a variety of shops, restaurants, cinemas, and leisure facilities. It's the perfect place for shopping, entertainment, and socializing.

The proximity to Baneasa Park offers a green oasis for relaxation. The park is suitable for outdoor walks, jogging, picnics, or simply enjoying nature amidst the city bustle.





With Henri Coanda International Airport (Otopeni) just a short distance away, residents in the area benefit from quick and convenient access to domestic and international flights.

The presence of schools, kindergartens, and educational institutions nearby makes the area attractive for families with children, offering quality educational facilities.

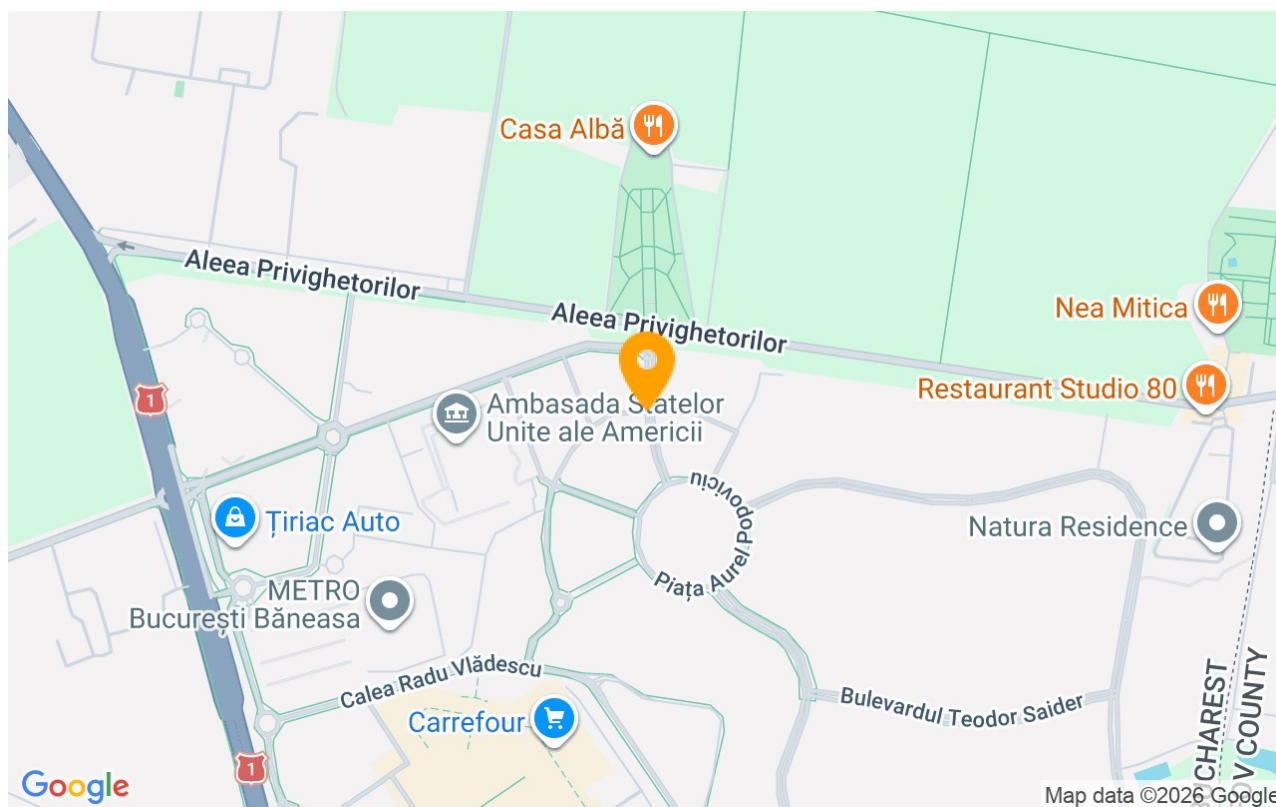
Property details

Rooms no.	3
Useable surface	125m²
Constructed surface	157m²
Apartment type	Apartment
Type of rooms	Independent
Type of comfort	Comfort 1
Bedrooms no.	2
Kitchens no.	1
Bathrooms no.	2
Building type	Block
Year built	2010
Config	1S+P+4
Floor	1
Balconies no.	1
State	Finished
Elevator	Yes
Parking inside	2
Storage no.	1

Amenities

-  Equipped kitchen
-  Furnished (Willing to take out)
-  Building heating
-  Air conditioning

Location



Photos

