



**Violetta Tudorache**

+40 729 005 624

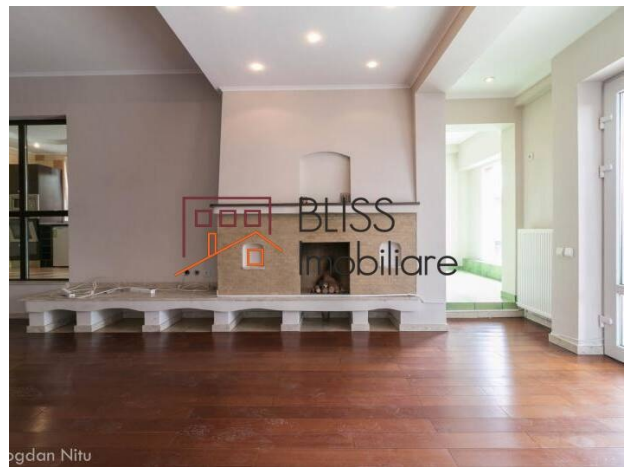
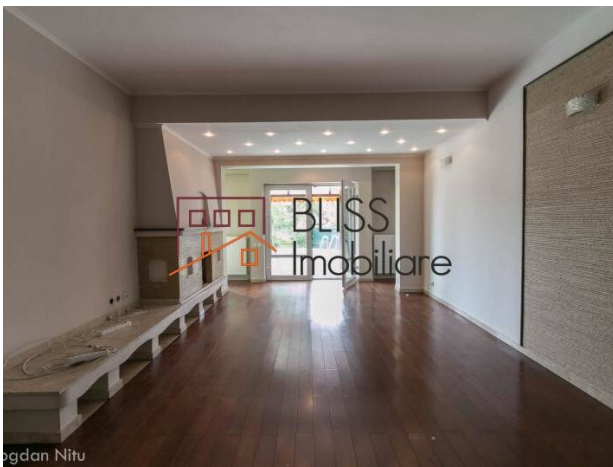
contact@blissimobiliare.ro  
(mailto:contact@blissimobiliare.ro)

Updated on 25 March 2026

## Modern house with garden, 5 bedrooms, Baneasa area

Web Reference  
**#7495**

Pipera Sud, Bucharest / Ilfov



<https://www.blissimobiliare.ro/index.php/en/house-5-bedrooms-for-rent-iancu-nicolae-pipera-bucharest-ilfov-7495> (<https://www.blissimobiliare.ro/index.php/en/house-5-bedrooms-for-rent-iancu-nicolae-pipera-bucharest-ilfov-7495>)

### Description

Villa located in Pipera area, suitable for residence and for office activities, built in 2007.

## Nice House in area Pipera-Baneasa, 5 bedrooms, 1 garage, swimming pool

The villa is very spacious, with a total usable area of 450 square meters and a garden of 400 square meters.

The property is distributed on three floors: 6 rooms, 5 bathrooms, a modern kitchen.

The Villa is semifurnished, it has a garage.



## Property details

|                              |                   |
|------------------------------|-------------------|
| <b>Rooms no.</b>             | 6                 |
| <b>Useable surface</b>       | 450m <sup>2</sup> |
| <b>Constructed surface</b>   | 500m <sup>2</sup> |
| <b>Bedrooms no.</b>          | 5                 |
| <b>Kitchens no.</b>          | 1                 |
| <b>Bathrooms no.</b>         | 5                 |
| <b>Building type</b>         | House             |
| <b>Year built</b>            | 2007              |
| <b>State</b>                 | Finished          |
| <b>Total land</b>            | 650m <sup>2</sup> |
| <b>Print</b>                 | 250m <sup>2</sup> |
| <b>Courtyard</b>             | 400m <sup>2</sup> |
| <b>Parking inside</b>        | 1                 |
| <b>Parking outside</b>       | 2                 |
| <b>Earthquake risk class</b> | Unclassified      |

## Amenities



Equipped kitchen



Semi furnished



Private heating



Suitable for office



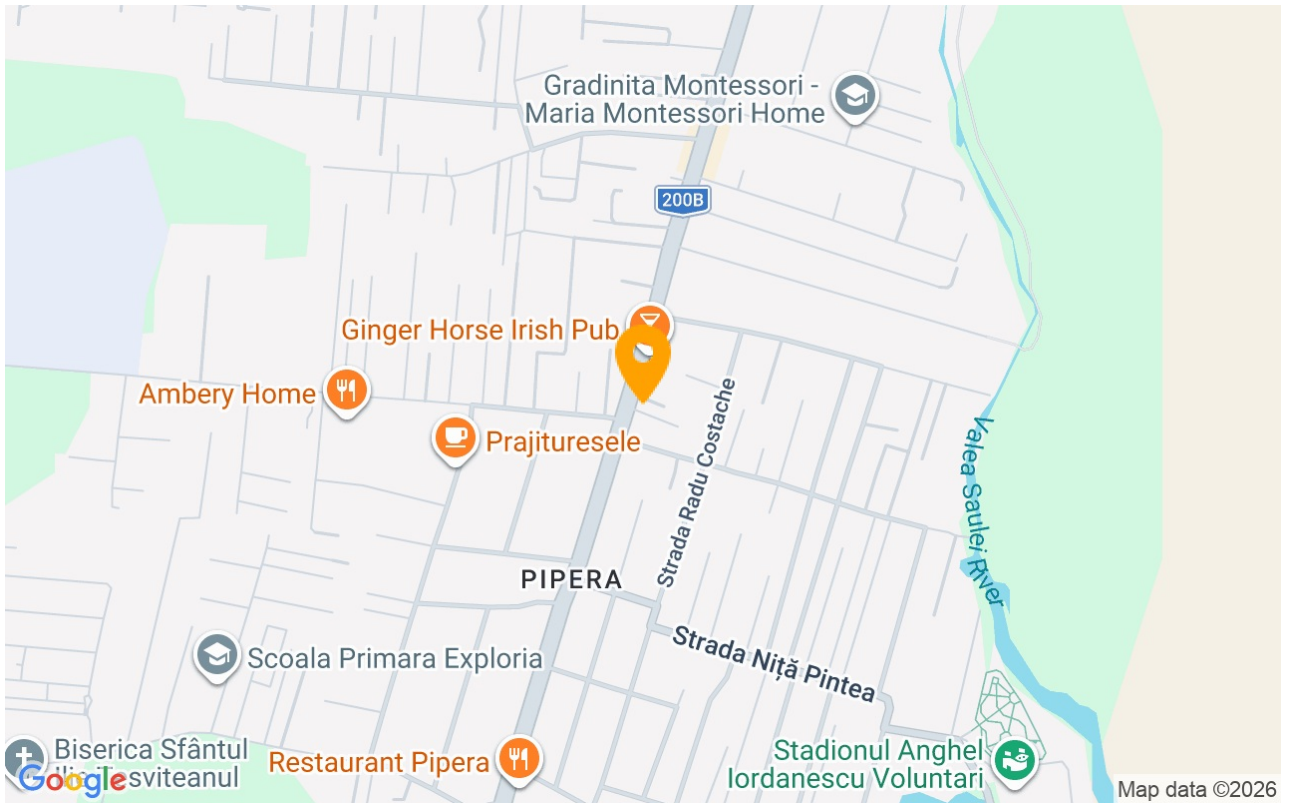
Fireplace



Swimming pool



## Location



## Photos

