



**Violetta Tudorache**

+40 729 005 624

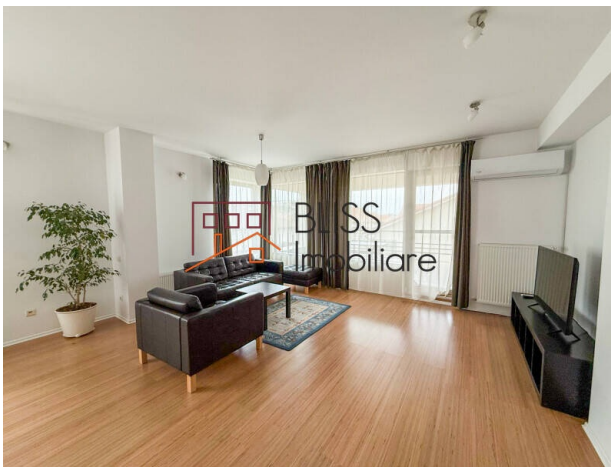
contact@blissimobiliare.ro  
(mailto:contact@blissimobiliare.ro)

Updated on 16 April 2025

## Elegant 3-Bedroom Penthouse - Spacious and Quiet

Web Reference  
**#67353**

📍 Lacul Baneasa, Bucharest



<https://www.blissimobiliare.ro/index.php/en/apartment-penthouse-2-bedrooms-for-rent-baneasa-sisesti-jandarmerie-straulesti-sector-1-bucharest-67353>

(<https://www.blissimobiliare.ro/index.php/en/apartment-penthouse-2-bedrooms-for-rent-baneasa-sisesti-jandarmerie-straulesti-sector-1-bucharest-67353>)

### Description

#### Elegant 3-Bedroom Penthouse - Ideal for Families

## Private Gated Property with Outdoor Parking

Located in an exclusive area in the north of Bucharest, this exceptional penthouse offers the perfect balance between comfort, privacy, and accessibility. Situated in a charming villa on a quiet, low-traffic street, this apartment is ideal for a family looking for a spacious, bright home close to nature.

#### Generous Space and an Ideal Layout

With a total surface of 170 sqm, the apartment features a spacious living room, perfect for family moments, two bright bedrooms, two modern bathrooms, and a fully equipped closed kitchen. The interior design focuses on high-end finishes, neutral colors, and quality materials that create a refined and welcoming ambiance.

#### Bright Interiors and Stunning Outdoor Spaces

One of the key highlights of this penthouse is the covered terrace, an ideal space for relaxation with open views and plenty of natural light. Additionally, the two balconies provide extra outdoor areas to enjoy fresh air and tranquility.

### **Modern Comfort and Premium Amenities**

- Fully furnished with elegant and functional furniture
- State-of-the-art appliances, including a dishwasher, refrigerator, stove, and TV
- Air conditioning for year-round comfort
- Private central heating system for energy efficiency
- High-speed internet connection
- A Quiet Neighborhood, Perfect for Families

This area is well known for its clean air, abundant green spaces, and proximity to Băneasa Forest, offering the perfect environment for outdoor activities. At the same time, you are just minutes away from Petrom City, the Jandarmeriei area, and Gheorghe Ionescu Sisești Road, with easy access to international schools, shopping centers, and restaurants.

### **Safety and Privacy**

Located in a villa with only two floors, the apartment offers a private and intimate atmosphere with very few neighbors. The property is fenced, and the private yard includes an outdoor parking space.

### **A Unique Opportunity**

This penthouse is the perfect choice for those who want to enjoy the advantages of a modern apartment while benefiting from the privacy and tranquility of a villa. With an excellent location and a refined design, it is a space that offers both comfort and quality living.





Property details


Rooms no.	3
Useable surface	160m²
Constructed surface	200m²
Apartment type	Penthouse apartment
Type of rooms	Independent
Type of comfort	Deluxe
Bedrooms no.	2
Kitchens no.	1
Bathrooms no.	2
Building type	Villa
Year built	2010
Config	P+2
Floor	2
Balconies no.	2
State	Finished
Parking outside	1
Storage no.	1
Average cost of utilities per month	50.00 EUR


Amenities

 Equipped kitchen

 Dishwasher

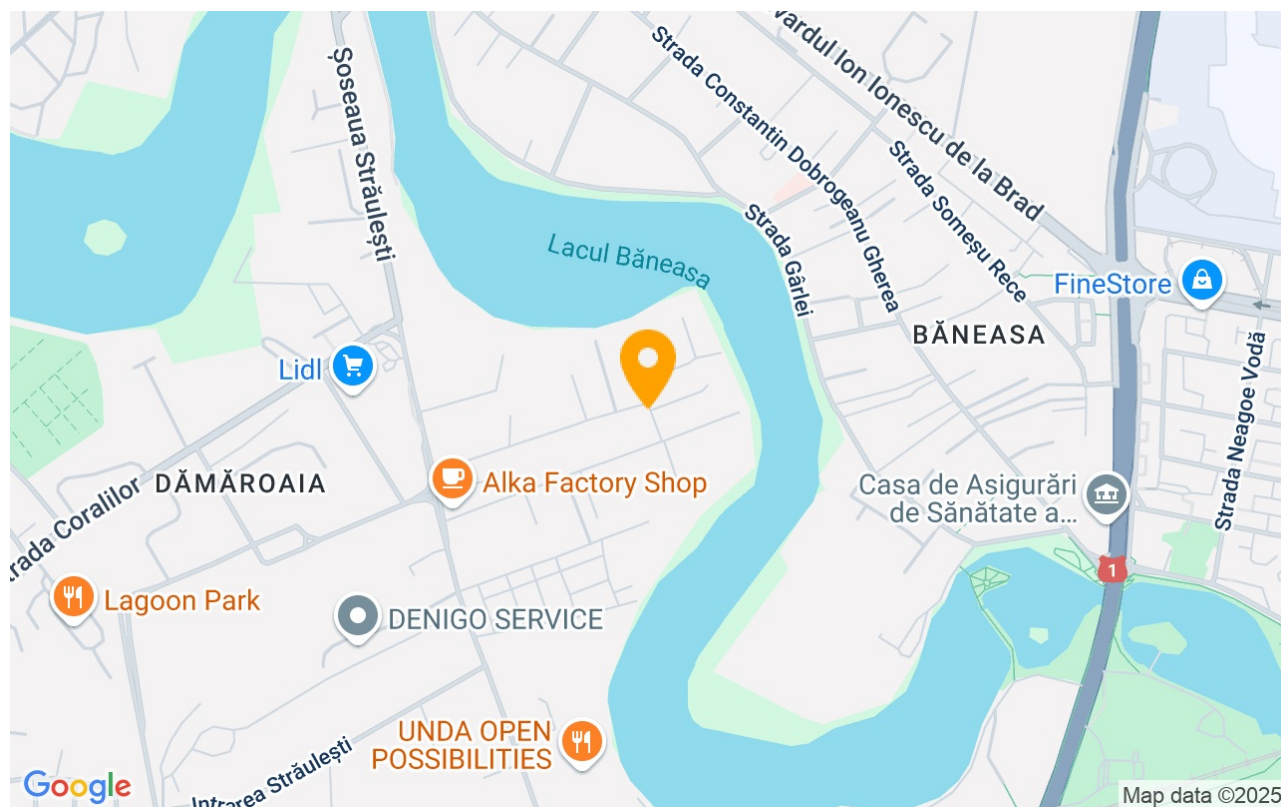
 Furnished

 Private heating

 Air conditioning



## Location



## Photos

