



Violetta Tudorache

+40 729 005 624

contact@blissimobiliare.ro
(mailto:contact@blissimobiliare.ro)

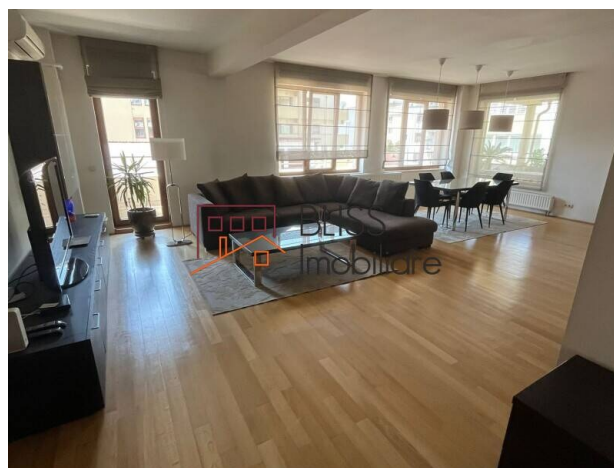
Updated on 8 December 2025

Luxurious and spacious 3 bedroom Apartment in Herastrau area

Herastrau, Bucharest

2,800 EUR/ month

Web Reference
#35558



<https://www.blissimobiliare.ro/index.php/en/apartment-3-bedrooms-for-rent-herastrau-nordului-bucharest-35558> (<https://www.blissimobiliare.ro/index.php/en/apartment-3-bedrooms-for-rent-herastrau-nordului-bucharest-35558>)

Description

BLISS Imobiliare presents a 3 bedroom apartment located on the 3rd floor in a 3-storey building completed in 2005, which has an elevator, in the Herastrau area.

Near Herastrau park and Aurel Vlaicu metro station

The luxurious apartment has a built area of 195 sqm and consists of living room, 3 bedrooms, kitchen, 2 bathrooms and 1 balcony.

Fully furnished and equipped and among the facilities we list the individual heating system, air conditioning and the 2 available parking spaces located outside.

Nearby there are bus and tram stations and the nearest metro station is Aurel Vlaicu, about 15 minutes walk.

One of the most exclusive and coveted areas in Bucharest, being surrounded by the Floreasca, Aviatiei and Baneasa neighborhoods - the Herastrau area - is not only a place for your ideal home, but also a lifestyle, located in an area that is a landmark of good taste and luxury.






The Herastrau Park and Lake, the largest park in the capital, is most renowned for its restaurants and cafes; the area facilitates and encourages outdoor sports and relaxation activities, being a safe and wonderful environment for families with children.

The Herastrau neighborhood is known for its top educational institutes, kindergartens, social and sports clubs, but also shopping centers: Promenada Mall, Romexpo, the nearby Piata Domenii and Floreasca areas with cozy and charming shops and restaurants.

Property details

Rooms no.	4
Useable surface	180m²
Constructed surface	200m²
Apartment type	Apartment
Type of rooms	Semi-independent
Type of comfort	Comfort 1
Bedrooms no.	3
Kitchens no.	1
Bathrooms no.	2
Building type	Block
Year built	2005
Config	P+3
Floor	3
Balconies no.	1
State	Finished
Elevator	Yes
Parking outside	2
Earthquake risk class	Unclassified

Amenities

-  Equipped kitchen
-  Dishwasher
-  Furnished
-  Private heating
-  Air conditioning

Location



Photos

