



**Violetta Tudorache**

+40 729 005 624

contact@blissimobiliare.ro  
(mailto:contact@blissimobiliare.ro)

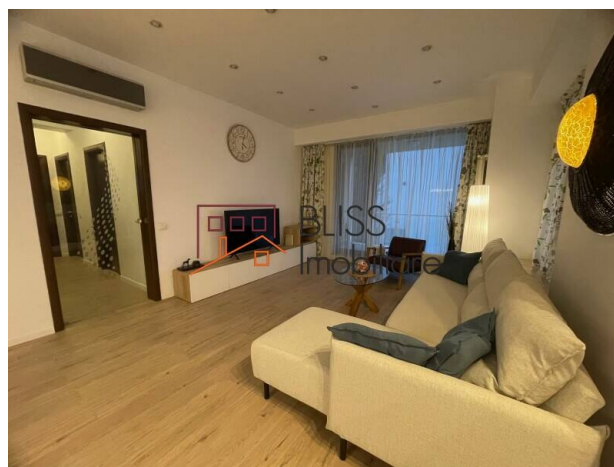
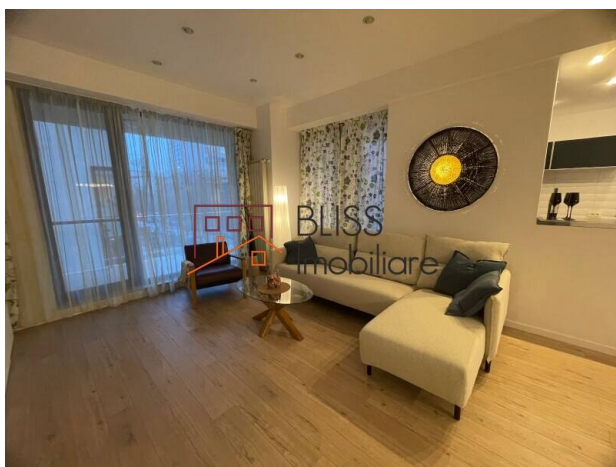
Updated on 28 January 2026

## Elegant 2-Bedroom Apartment

North Area Lake View, Aviatiei Sud, Bucharest

Web Reference

**#34516**



<https://www.blissimobiliare.ro/index.php/en/apartment-2-bedrooms-for-rent-aviatiei-promenada-mall-metro-pipera-bucharest-34516> (<https://www.blissimobiliare.ro/index.php/en/apartment-2-bedrooms-for-rent-aviatiei-promenada-mall-metro-pipera-bucharest-34516>)

### Description

**Modern 2-Bedroom Apartment in North Area Lake View - 110 sqm, Renovated, Luxury Furnished, Underground Parking**

## Secure residential complex with premium amenities

We are pleased to present a refined 2-bedroom apartment, located in the North Area Lake View residential complex, a well-regarded development known for its quality standards, calm atmosphere and convenient location. The apartment benefits from above-standard finishes, having been recently renovated.

Situated on the 1st floor, the apartment offers a usable area of 110 sqm and a fully separated layout, providing generous and well-balanced living spaces.

### Layout & Features:

- Spacious and bright living room with relaxation area;
- Fully fitted and equipped kitchen with modern appliances;
- Two comfortable bedrooms
- Two modern bathrooms;
- Balcony;
- Underground parking space included.

**Benefits & Amenities:**

- Modern, thermally insulated building with well-maintained common areas;
- Secure access, 24/7 security and video surveillance;
- Elevator, video intercom and landscaped communal courtyard;
- Residential complex with green areas and leisure spaces.

**Location:**

North Area Lake View offers a balanced residential environment, with easy access to major business districts, green areas and key points of interest in northern Bucharest.

A complete, modern apartment, ideal for long-term living in a premium residential complex.



Property details

Rooms no.	3
Useable surface	110m²
Constructed surface	135m²
Apartment type	Apartment
Type of rooms	Independent
Bedrooms no.	2
Kitchens no.	1
Bathrooms no.	2
Building type	Block
Year built	2009
Config	2S+P+8+M
Floor	1
Balconies no.	1
State	Finished
Elevator	Yes
Parking inside	1
Earthquake risk class	Unclassified

Amenities

-  Equipped kitchen
-  Dishwasher
-  Furnished
-  Private heating
-  Air conditioning



## Location



## Photos

