



Violetta Tudorache

+40 729 005 624

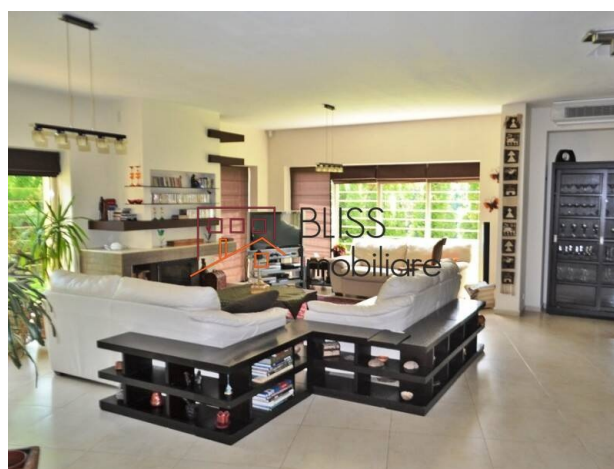
contact@blissimobiliare.ro
(mailto:contact@blissimobiliare.ro)

Updated on 24 March 2026

Villa with pool, jacuzzi and sauna in Pipera, Voluntari

Web Reference
#30957

Pipera Nord, Bucharest / Ilfov



<https://www.blissimobiliare.ro/index.php/en/villa-5-bedrooms-for-rent-iancu-nicolae-pipera-bucharest-ilfov-30957> (<https://www.blissimobiliare.ro/index.php/en/villa-5-bedrooms-for-rent-iancu-nicolae-pipera-bucharest-ilfov-30957>)

Description

Villa located in Voluntari, in a very quiet and green residential area, near Băneasa Forest, with 5 bedrooms, 3 bathrooms, 2 balconies and a kitchen. The villa has a jacuzzi and sauna and has an area of 360 sqm on a GF+1 structure.

Villa close to American School, British School and Baneasa Forest

The ground floor has an area of 179 sqm, where you will find: the main entrance protected by glass, the main hall, the guest bedroom, a bathroom, open living room with fireplace, open and fully equipped kitchen, a storage room with refrigerator and freezer, spiral staircase with special design, technical room with access from the garden, a large garage for 2 cars and storage.

The first floor has an area of 169 square meters and is divided into: 4 large bedrooms, 2 bathrooms, one with jacuzzi and sauna, and 2 balconies.

The property benefits from a separate building, with the function of summer kitchen, with an area of 22.5 sqm, with a rustic design, decorated with an open fireplace.

The garden has an area of 700 square meters and has a very beautiful landscape, with many trees, a small pond with a waterfall, plants and flowers and a pool measuring 9x5x1.6 m.


It is close to Baneasa Forest, American School, British School, Baneasa Shopping City and Bucharest-Brasov highway.

In terms of public transport, the villa has easy access, via bus lines, to the Pipera subway station, which provides a fast connection to the center of Bucharest.


Property details


Rooms no.	6
Useable surface	360m ²
Constructed surface	427m ²
Bedrooms no.	5
Kitchens no.	1
Bathrooms no.	3
Building type	Villa
Year built	2008
Balconies no.	2
State	Finished
Total land	850m ²
Courtyard	700m ²
Parking inside	2
Parking outside	1


Amenities

 Equipped kitchen

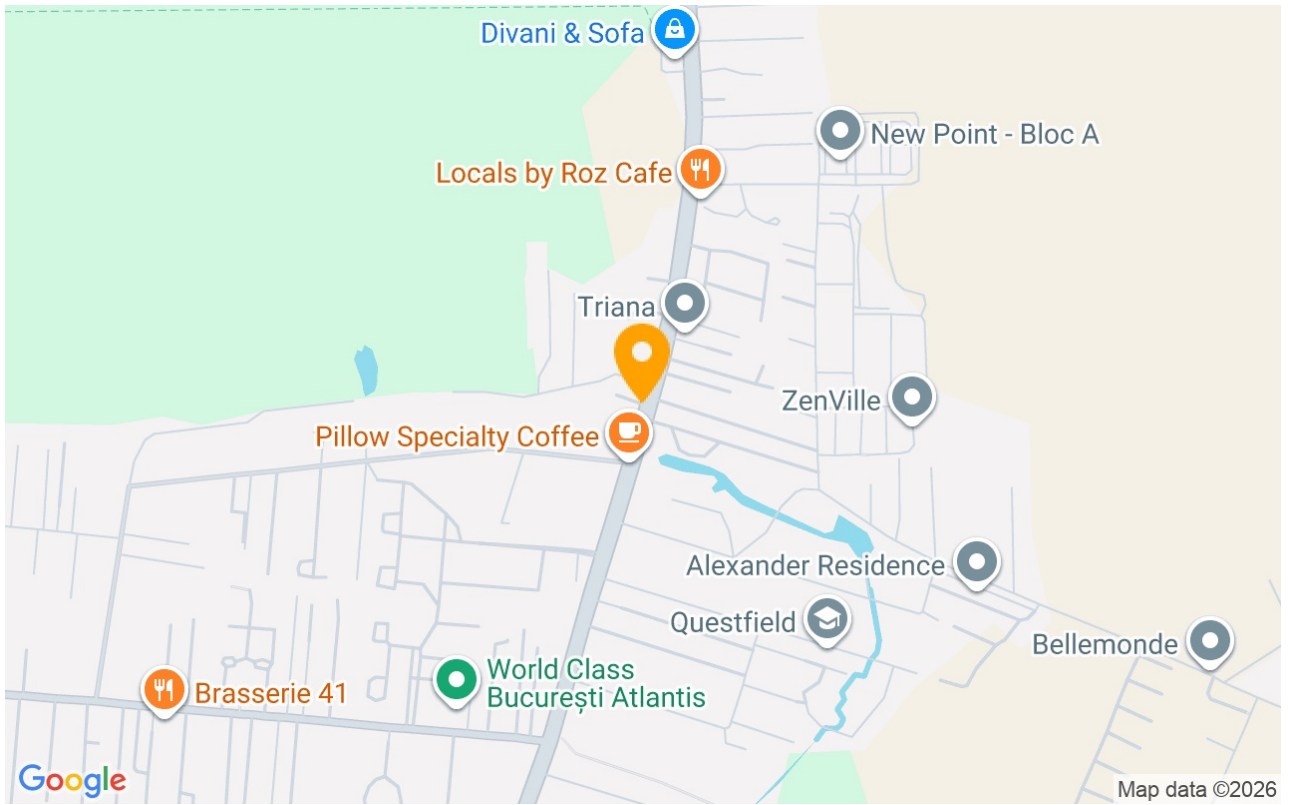
 Dishwasher

 Furnished

 Private heating

 Swimming pool

Location



Photos

