



**Violetta Tudorache**

+40 729 005 624

contact@blissimobiliare.ro  
(mailto:contact@blissimobiliare.ro)

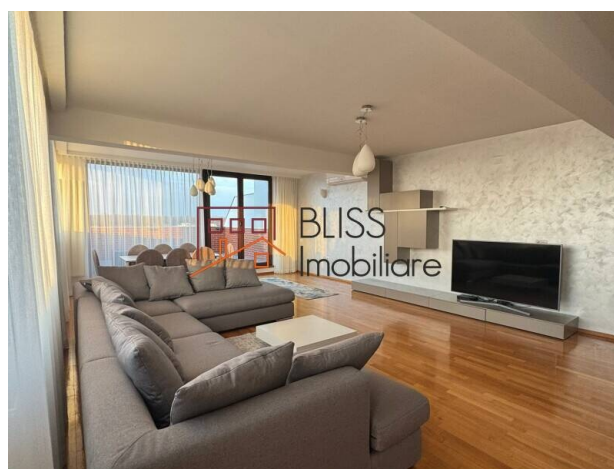
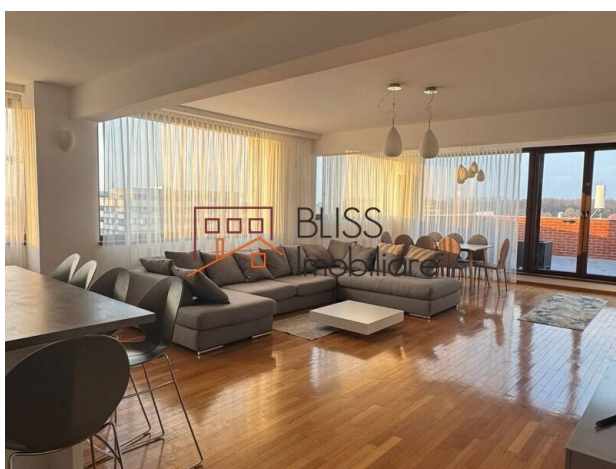
Updated on 18 July 2025

## 3 bedroom penthouse apartment

Vatra Noua, Bucharest

**1,900 EUR/ month**

Web Reference  
**#29228**



<https://www.blissimobiliare.ro/index.php/en/apartment-penthouse-3-bedrooms-for-rent-baneasa-sisesti-jandarmerie-straulesti-sector-1-bucharest-29228>

(<https://www.blissimobiliare.ro/index.php/en/apartment-penthouse-3-bedrooms-for-rent-baneasa-sisesti-jandarmerie-straulesti-sector-1-bucharest-29228>)

### Description

Modern Apartment with Premium Features and Stunning Views

This spacious 170m<sup>2</sup> apartment offers an exceptional living experience with a thoughtfully designed layout:

- Open-plan living and kitchen area: 60m<sup>2</sup>
- Master bedroom: 20m<sup>2</sup>
- Bedroom 2: 15m<sup>2</sup>
- Bedroom 3: 18m<sup>2</sup>
- Bathrooms: 2 full bathrooms + 1 guest WC
- Terrace: 27m<sup>2</sup>, perfect for relaxing or entertaining
- Additional spaces: Dressing room, hallways
- Parking: 3 spaces (2 in a secure garage + 1 exterior).

Located in a closed residential complex with spacious hallways, video surveillance, and top-notch security.

Premium features include:

- Luxury Rovere furniture

- Whirlpool AC
- Vaillant central heating system
- Electric blinds for windows
- Fully equipped kitchen with dishwasher and washing machine

Views: Enjoy breathtaking views of Stejarii Forest and Grivița Lake.

A true blend of comfort, style, and tranquility!



Property details

Rooms no.	4
Useable surface	170m²
Constructed surface	192m²
Apartment type	Penthouse apartment
Type of rooms	Independent
Type of comfort	Comfort 1
Bedrooms no.	3
Kitchens no.	1
Bathrooms no.	3
Building type	Block
Year built	2014
Config	1S+P+5
Floor	5
Balconies no.	1
State	Finished
Elevator	Yes
Parking inside	2
Parking outside	1

Amenities

-  Equipped kitchen
-  Dishwasher
-  Furnished
-  Private heating
-  Air conditioning



## Location



## Photos

