



**Violetta Tudorache**

+40 729 005 624

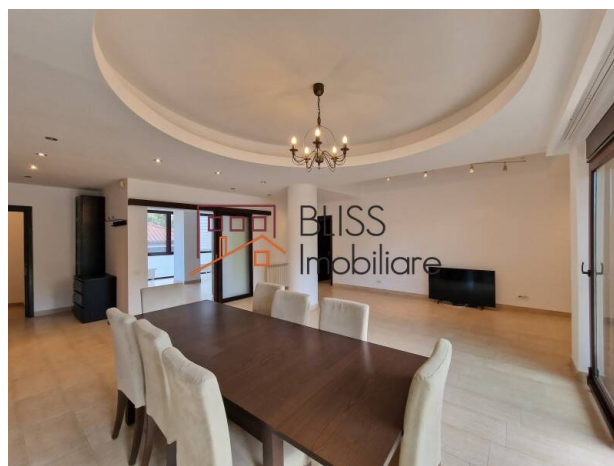
contact@blissimobiliare.ro  
(mailto:contact@blissimobiliare.ro)

Updated on 4 July 2025

## **3-bedroom apartment of 201 sqm with 2 underground parking spaces**

Floreasca, Bucharest

Web Reference  
**#28832**



<https://www.blissimobiliare.ro/index.php/en/apartment-3-bedrooms-for-rent-floreasca-barbu-vacarescu-bucharest-28832> (<https://www.blissimobiliare.ro/index.php/en/apartment-3-bedrooms-for-rent-floreasca-barbu-vacarescu-bucharest-28832>)

### **Description**

BLISS Imobiliare presents a spacious and bright 3-bedroom apartment, which occupies the entire 2nd floor of a 5-story building built in 2007 and located in the Floreasca area, in the immediate vicinity of Verdi Park.

## The rooms are semi-furnished, and the kitchen is fully furnished and equipped.

The apartment has a usable area of 173 square meters and is intelligently compartmentalized, so that the entire space is optimized to meet the needs of all family members. It is divided into 3 spacious bedrooms, 2 of which are positioned towards the back of the block, and one towards the front facing the street. We also find a very spacious living room with a dining area and a closed kitchen.

Each bedroom has its own open balcony, and the living room opens onto a 10 sqm terrace. They are separated from the rooms by large and tall glass windows and doors, so you will be able to enjoy a lot of natural light all day and help you minimize the consumption of electricity.

Also, each bedroom has its own hall and bathroom, and next to the kitchen there is a closet and a pantry. The apartment also has a storage/laundry room, which is located on the staircase and is used exclusively by those who live in the apartment, and 2 underground parking spaces.

The property is located in a quiet residential neighborhood, in a convenient area, full of facilities and with quick access to points of interest in Bucharest. There are bus and tram stations nearby, which quickly lead to other areas of interest in the capital, and the nearest metro stations, Aurel Vlaicu and Stefan cel Mare, are 10 minutes away by car or approximately 25 minutes by foot.

The Floreasca area is one of the most exclusive and coveted in Bucharest, being surrounded by the neighborhoods of Primaverii, Aviatiei and Dorobanti, being not only a perfect place for your home, but also for an ideal lifestyle.

Those who wish to be residents in this area can enjoy parks such as Verdi Park, which is in the immediate vicinity, or Floreasca Park, located a few minutes' walk away. These parks facilitate and encourage outdoor sports and relaxation activities, being a safe and wonderful environment for families with children. In addition, in Floreasca Park there is also a swimming pool with a restaurant and terrace.

Apart from the parks, in this area there are various shops and showrooms with luxury products, supermarkets, bank branches, clinics, beauty salons and spas, gyms or yoga studios, etc., so you can solve any need and satisfy any desire quickly and easily.

This area is also famous for the large number of cafes, restaurants, patisseries, confectioners and social clubs, places where people with common interests and an active social life meet.

You will also have a variety of educational centers, elite international schools, kindergartens and after-schools for children, which makes this home also suitable for families with children. The closest one is Liceu Teoretic C.A. Rosetti, which is just a 3-minute walk away.



## Property details

Rooms no.	4
Useable surface	173m²
Constructed surface	201m²
Apartment type	Apartment
Type of rooms	Independent
Type of comfort	Comfort 1
Bedrooms no.	3
Kitchens no.	1
Bathrooms no.	3
Building type	Block
Year built	2004
Config	1S+P+5
Floor	2
Balconies no.	3
State	Finished
Elevator	Yes
Parking inside	2

## Amenities



Equipped kitchen



Dishwasher



Not furnished ( Willing to furnish )



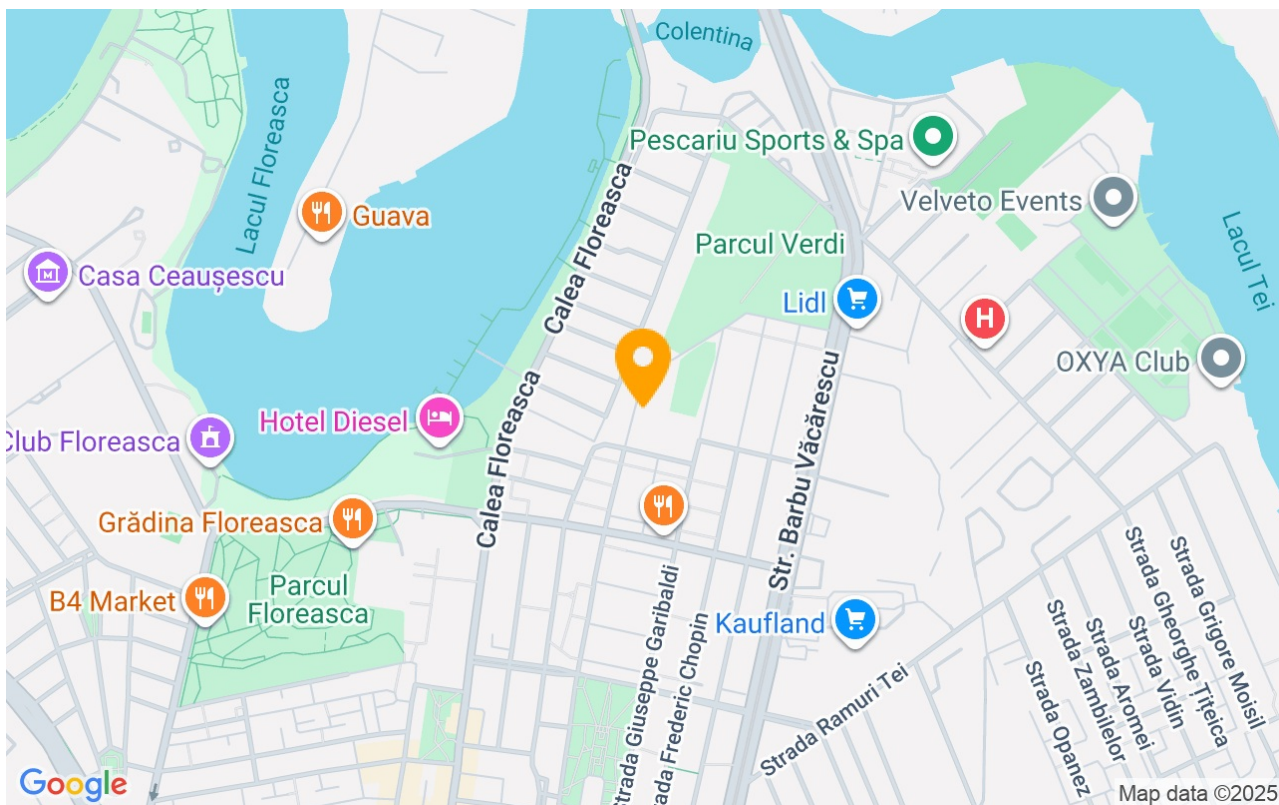
Building heating



Air conditioning



## Location



## Photos

