



Violetta Tudorache

+40 729 005 624

contact@blissimobiliare.ro
(mailto:contact@blissimobiliare.ro)

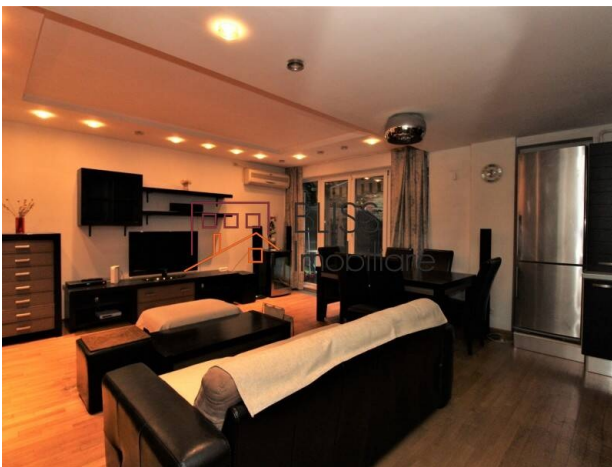
Updated on 23 April 2026

Elegant 1-Bedroom Apartment with Terrace

850 EUR/ month

Web Reference
#28799

Herastrau, Bucharest



<https://www.blissimobiliare.ro/index.php/en/apartment-1-bedroom-for-rent-herastrau-nordului-bucharest-28799> (<https://www.blissimobiliare.ro/index.php/en/apartment-1-bedroom-for-rent-herastrau-nordului-bucharest-28799>)

Description

1-Bedroom Apartment on Ground Floor - 50 sqm + Private Terrace 50 sqm, Herăstrău Area

Sophisticated Living Just Steps Away from Herastrau Park

33 sqm open-plan living with direct access to private garden

We present a distinctive 1-bedroom apartment located on the high ground floor of a modern 4-storey building constructed in 2009, in the Herăstrău - Nordului area. The usable area of 50 sqm is complemented by a private garden and terrace of 50 sqm - a rare privilege in this neighborhood - offering the comfort and intimacy of a house, at the quality of a modern building.

The generous 33 sqm open-plan living room with kitchen, direct access to the landscaped private garden, an ample dressing room and an underground parking space make this property an excellent choice for a couple or professional who values private outdoor space and tranquility, without giving up proximity to all the area's amenities.

Layout & Interior Spaces

- 33 sqm open-plan living room with kitchen - bright and functional
- 12 sqm bedroom
- Modern bathroom

- Private terrace

Amenities & Features

- Fully furnished and equipped
- Fully equipped kitchen
- 2 air conditioning units (living room and bedroom)

Building Facilities

- Modern building, constructed in 2009
- 1 underground parking space included
- Modern elevator

Location - Herăstrău | Nordului

An excellent location in the Herăstrău - Nordului area, with easy access to:

- Herăstrău Park and Herăstrău Lake
- Promenada Mall and Aurel Vlaicu metro station
- Aviației-Pipera business hub
- Restaurants, cafés and sports clubs

A unique property for a couple or professional seeking the comfort of a private garden and the green atmosphere of the Herăstrău area, in a modern and fully equipped apartment.

Property details

Rooms no.	2
Useable surface	50m ²
Constructed surface	60m ²
Apartment type	Apartment
Type of rooms	Semi-independent
Type of comfort	Deluxe
Bedrooms no.	1
Kitchens no.	1
Bathrooms no.	1
Building type	Block
Year built	2009
Config	1S+DS+HP+4
Floor	High Groundfloor
Balconies no.	1
State	Finished
Elevator	Yes
Parking inside	1

Amenities



Equipped kitchen



Furnished



Private heating



Air conditioning

Location



Photos

