



**Violetta Tudorache**

+40 729 005 624

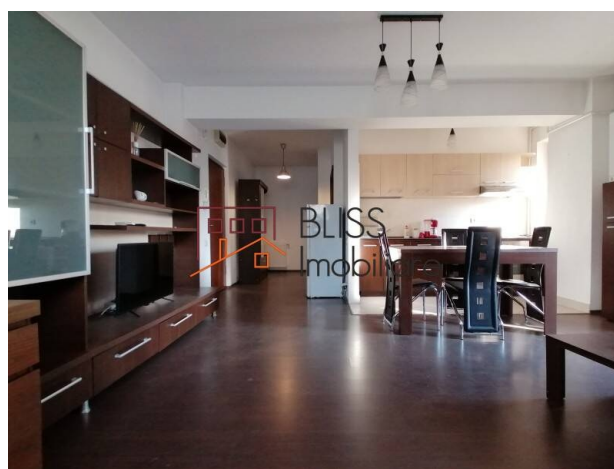
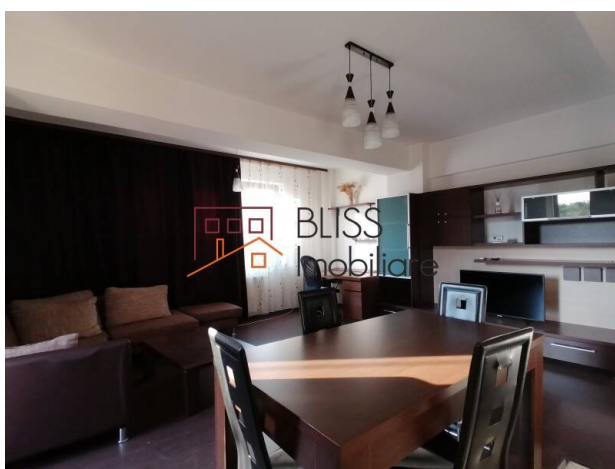
contact@blissimobiliare.ro  
(mailto:contact@blissimobiliare.ro)

Updated on 24 February 2025

## Spacious one-bedroom apartment Baneasa area

📍 Baneasa Garlei, Bucharest

Web Reference  
**#19601**



<https://www.blissimobiliare.ro/index.php/en/apartment-1-bedroom-for-rent-baneasa-sisesti-jandarmerie-straulesti-sector-1-bucharest-19601>

(<https://www.blissimobiliare.ro/index.php/en/apartment-1-bedroom-for-rent-baneasa-sisesti-jandarmerie-straulesti-sector-1-bucharest-19601>)

### Description

We present a spacious 1-bedroom apartment located in a premium location in the Baneasa neighborhood. In the area there is Baneasa Lake, Herastrau Park, Baneasa Shopping City, etc., and everything that matters to you and your comfort.

## Located near Baneasa Lake, Herastrau Park, Baneasa Shopping City

The apartment features a usable area of 70 square meters, and has the following layout: open-space living-room with dining area, open kitchen, bedroom, bathroom with shower, balcony.

Located on the 1st floor, in an BS+4E+M building built in 2012, the apartment has a modern design, with a chic but comfortable air, in a safe and green area.

The apartment is fully furnished and modernly equipped, with absolutely everything you need. The heating and cooling of the apartment is done through apartment central heating and air conditioning units.

Among the facilities there is also a parking space included in the underground parking of the building, but also a storage box.

The area is very quiet, rich in green spaces, near which we find educational centers, pharmacies, supermarkets and Baneasa Shopping City.

There is quick access to the area and Herastrau Park, where you can enjoy not only a quiet promenade, surrounded by greenery, but also a glass of wine at one of the many terraces, restaurants, cafes, famous for their exclusivity.

Regarding the means of public transport, in the vicinity there is the Aurel Vlaicu metro station, with the M2 highway, but also the bus stations that surround the city.



## Property details

Rooms no.	2
Useable surface	70m²
Constructed surface	82m²
Apartment type	Apartment
Type of rooms	Independent
Type of comfort	Comfort 1
Bedrooms no.	1
Kitchens no.	1
Bathrooms no.	1
Building type	Block
Year built	2012
Config	1S+P+4+M
Floor	1
Balconies no.	1
State	Finished
Elevator	Yes
Parking inside	1
Storage no.	1
Earthquake risk class	Unclassified
Average cost of utilities per month	50.00 EUR

## Amenities



Equipped kitchen



Furnished



Private heating



Air conditioning



Swimming pool



## Location



## Photos

