



**Violetta Tudorache**

+40 729 005 624

contact@blissimobiliare.ro  
(mailto:contact@blissimobiliare.ro)

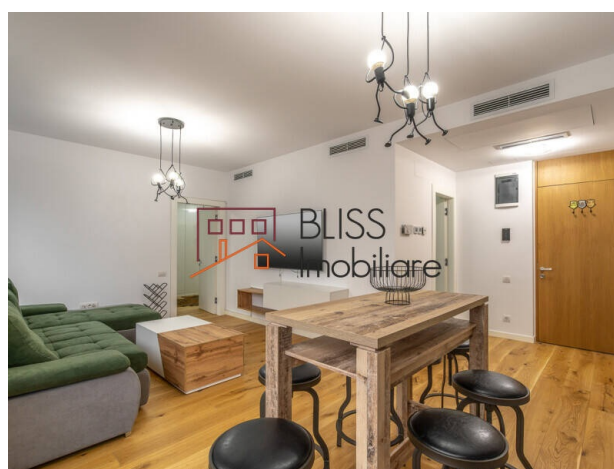
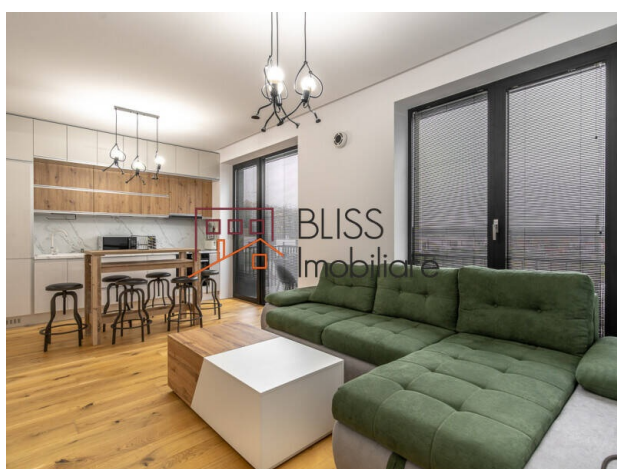
Updated on 14 May 2026

## Fully furnished 1-bedroom in a certified green community

**164,000 EUR**

Web Reference  
**#145577**

Amber Forest, Comuna Tunari, Bucharest / Ilfov



<https://www.blissimobiliare.ro/index.php/en/apartment-1-bedroom-for-sale-otopeni-tunari-bucharest-ilfov-145577> (<https://www.blissimobiliare.ro/index.php/en/apartment-1-bedroom-for-sale-otopeni-tunari-bucharest-ilfov-145577>)

### Description

This apartment redefines sustainable living in northern Bucharest, set within the first residential community in Europe to be awarded LEED v4.1 Communities: Plan and Design Platinum certification by the U.S. Green Building Council - the world's most demanding standard for green residential developments. Delivered fully furnished and equipped with premium finishes, oriented south-west with direct forest views, it is built for those who choose modern comfort, energy efficiency and a lifestyle connected to nature.

## nZEB standard and 15-minute city concept, 14 km from city centre

### Property details

- Usable area: 50 sqm usable area
- Total area (incl. balcony): 55 sqm
- Rooms: 2 (1 bedroom + living area)
- Living area: 18 sqm usable area
- Master bedroom: 17 sqm usable area
- Open-plan kitchen: 5 sqm usable area
- Hallway: 5 sqm usable area

- Bathroom: 6 sqm usable area
- Balcony: 5 sqm
- Year built: 2023 - completed
- Floor: 2 of G+3
- Layout: semi-open
- Comfort class: Delux
- Orientation: south-west with forest view
- Parking: 1 above-ground space with EV charging station
- Lift

### **Interior and functionality**

The interior is laid out efficiently and elegantly, with an entrance hallway, a bright 18 sqm usable area living space, open-plan kitchen fully equipped with premium appliances, a generous 17 sqm usable area master bedroom and a 5 sqm balcony with direct forest views. The apartment is handed over fully furnished and equipped, with custom-made joinery and a finish level aligned to the premium standard of the wider development.

### **Finishes and technical specifications**

- Reynaers PVC-Aluminium triple-glazed joinery
- Pinum interior doors with magnetic closure
- Secured entrance door
- Underfloor heating throughout
- Triple-layer engineered wood flooring
- Centralised mechanical ventilation system
- Roca sanitary fittings
- Integrated smart home system
- Generous integrated storage
- Heat pump (nZEB energy efficiency)

### **Community amenities**

- First LEED v4.1 Platinum community in Europe (USGBC)
- nZEB standard - nearly Zero Energy Building performance
- 15-minute city concept - all essential services within walking distance
- 5.3 hectares of parks and green areas
- Sports club in partnership with Pescariu Sports & Spa
- Education by Verita International School & Kindergarten
- Commercial area: supermarket, farmer's market, bakery, restaurants, cafes
- On-site medical centre and pharmacy
- Co-working hub and outdoor cinema
- Playgrounds, sports courts and dedicated cycling paths
- Controlled access and 24/24h security
- Over 250 families already living in the community

### **Location**

Set in northern Bucharest, just 14 km from Piata Victoriei, the community offers a rare balance between quiet, nature and accessibility. Fast routes via DN1, A3 motorway and the Ring Road provide strong connectivity to the city centre, Henri Coanda International Airport and the main northern business zones. The 250 families already settled here confirm the quality of a lifestyle built around family, safety and shared values.

A home not purchased for square meters, but for a standard of living aligned with the future of urban living: sustainable, energy-efficient and deeply community-driven.

### **FAQ**

#### **What does Amber Forest's LEED Platinum certification mean?**

Amber Forest is the first residential project in Europe to be awarded LEED v4.1 Communities: Plan and Design Platinum certification by the U.S. Green Building Council. It confirms top-tier performance in energy efficiency, water management, low emissions, sustainable transport and resident quality of life.

**What does the nZEB standard mean for this apartment?**

nZEB (nearly Zero Energy Building) is the European standard for buildings with near-zero energy consumption. The apartment benefits from a heat pump, underfloor heating, centralised ventilation and triple-glazed joinery - translating into significantly lower monthly running costs and consistent thermal comfort.

**Is the apartment completed and move-in ready?**

Yes. The building is finished and the apartment is delivered fully furnished and equipped with premium appliances, custom-made joinery and finishes already installed. The buyer can move in immediately after signing.

**What amenities does the Amber Forest community offer residents?**

The community includes 5.3 hectares of parks, a Pescariu Sports & Spa sports centre, Verita International School and Kindergarten, a complete commercial area with supermarket, farmer's market, bakery, restaurants, a co-working hub, outdoor cinema, medical centre, pharmacy, playgrounds and cycling paths - all built around the 15-minute city concept.

**How accessible is the location from central Bucharest?**

The community is located 14 km from Piata Victoriei, with fast access via DN1, the A3 motorway and the Ring Road. Henri Coanda International Airport and the main northern business zones are a short drive away.





## Property details


<b>Rooms no.</b>	2
<b>Useable surface</b>	50m <sup>2</sup>
<b>Constructed surface</b>	55m <sup>2</sup>
<b>Apartment type</b>	Apartment
<b>Type of rooms</b>	Semi-independent
<b>Type of comfort</b>	Deluxe
<b>Bedrooms no.</b>	1
<b>Kitchens no.</b>	1
<b>Bathrooms no.</b>	1
<b>Building type</b>	Block
<b>Year built</b>	2023
<b>Config</b>	P+3
<b>Floor</b>	2
<b>Balconies no.</b>	1
<b>State</b>	Finished
<b>Elevator</b>	Yes
<b>Parking outside</b>	1

## Amenities

 Equipped kitchen

 Dishwasher

 Furnished

 Building heating

 Air conditioning



## Location



## Photos

