



Violetta Tudorache

+40 729 005 624

contact@blissimobiliare.ro
(mailto:contact@blissimobiliare.ro)

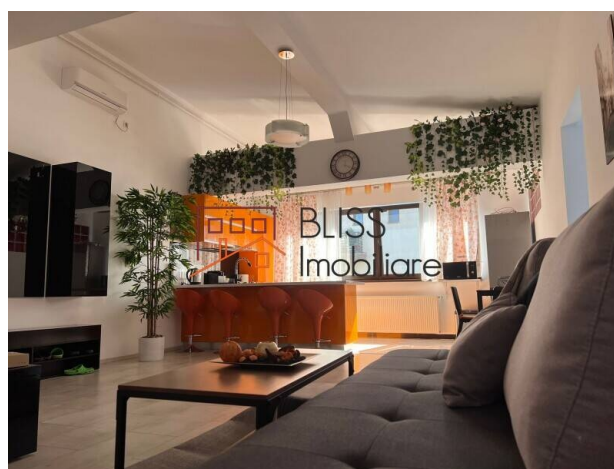
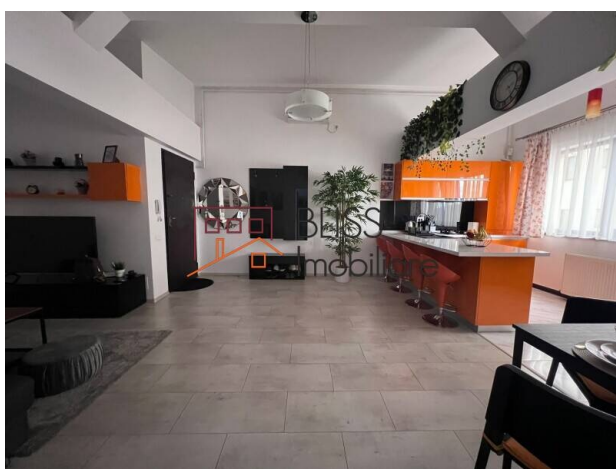
Updated on 29 April 2026

Bright 1-Bedroom Apartment with Open-Plan Living

165,000 EUR

Web Reference
#145485

 Petrom City, Bucharest



<https://www.blissimobiliare.ro/index.php/en/apartment-1-bedroom-for-sale-baneasa-sisesti-jandarmerie-straulesti-sector-1-bucharest-145485>

(<https://www.blissimobiliare.ro/index.php/en/apartment-1-bedroom-for-sale-baneasa-sisesti-jandarmerie-straulesti-sector-1-bucharest-145485>)

Description

This 1-bedroom apartment offers an airy living experience shaped by notable ceiling height and an open-plan living and kitchen area suited to comfortable city living. The 81 sqm of usable space are efficiently arranged and include a well-sized bedroom with a 180 cm double bed, two spacious wardrobes and extra room for a desk or baby cot. The bathroom stands out through both scale and functionality, featuring a walk-in shower, bathtub and double sinks. Set on the top floor of a 2014 building, equipped kitchen, furnishings, air conditioning.

Generous bathroom, balcony and practical city access

Its position in northern Bucharest, close to Herăstrău Park, Băneasa Shopping City, Lidl and bus links towards Piața Romană and Pipera, adds everyday convenience and a strong lifestyle component.

For more details and similar options, contact the BLISS Imobiliare team.

Property details

Rooms no.	2
Useable surface	81m ²
Constructed surface	90m ²
Apartment type	Apartment
Type of rooms	Semi-independent
Type of comfort	Comfort 1
Bedrooms no.	1
Kitchens no.	1
Bathrooms no.	1
Building type	Block
Year built	2014
Config	P+3+M
Floor	Livable Attic
State	Finished
Elevator	Yes
Earthquake risk class	Unclassified

Amenities



Equipped kitchen



Furnished (Willing to take out)



Private heating



Air conditioning

Location



Photos

