



Violetta Tudorache

+40 729 005 624

contact@blissimobiliare.ro
(mailto:contact@blissimobiliare.ro)

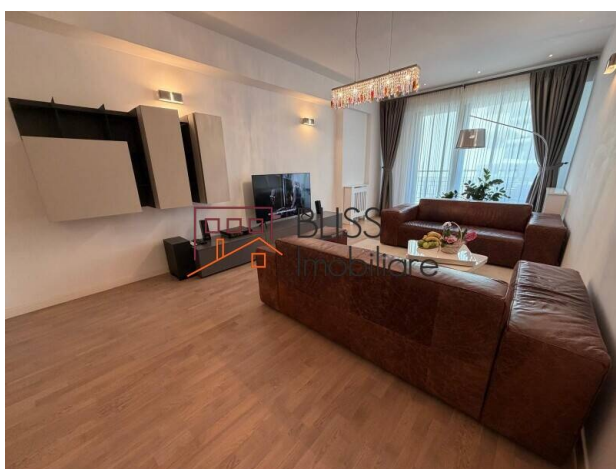
Updated on 27 April 2026

Elegant 2-Bedroom Apartment Steps from Herăstrău Park

1,500 EUR/ month

Web Reference
#145421

 Lighthouse Residence, Herastrau, Bucharest



<https://www.blissimobiliare.ro/index.php/en/apartment-2-bedrooms-for-rent-herastrau-nordului-bucharest-145421> (<https://www.blissimobiliare.ro/index.php/en/apartment-2-bedrooms-for-rent-herastrau-nordului-bucharest-145421>)

Description

Modern 2-Bedroom Apartment in Lighthouse Residence - Premium Living Near Herastrau Park

Secure Living with Underground Parking in Herastrau

We present a sophisticated 2-bedroom apartment located in the prestigious Lighthouse Residence, a benchmark for high-quality residential standards in Northern Bucharest. Situated on the 3rd floor of a building completed in 2018, this property offers the perfect blend of contemporary design, generous space, and proximity to nature.

Sophisticated Interior and Modern Layout

The apartment is designed to provide a premium living experience, featuring high-end finishes and exceptional natural light:

Size & Layout: With a usable area of 90 sqm, the apartment features a spacious living room and 2 well-proportioned bedrooms, ensuring privacy and comfort for all residents.

- **Living Area:** An open, airy space furnished with modern pieces, serving as the heart of the home.
- **Balcony:** A private outdoor space, perfect for quiet relaxation in a serene environment.
- **Bathrooms:** The residence benefits from 2 fully equipped bathrooms, finished with high-quality

materials.

- Condition: Offered fully furnished and modernly equipped, this is a "turn-key" property ready for immediate move-in.

Premium Amenities and Technical Excellence

- Parking: The apartment benefits from 1 included underground parking space, a vital asset in the high-demand Herastrau area.
- Appliances: Fully functional kitchen with a dishwasher, high-performance air conditioning, and secured building access.
- Building Features: Modern 2S+G+6 structure with elevator access, video surveillance, and impeccably maintained common areas.

Location: Exclusive Lifestyle in North Bucharest

Lighthouse Residence provides immediate access to the best the Herastrau neighborhood has to offer:

- Nature: Just a short walk away from Herastrau Park, the perfect spot for outdoor activities.
- Lifestyle: Proximity to the most renowned restaurants, gourmet coffee shops, and exclusive clubs on Nordului Road.
- Connectivity: Easy access to the Pipera-Aviatiei business hub and the city center.

Property details

Rooms no.	3
Useable surface	90m ²
Apartment type	Apartment
Type of rooms	Semi-independent
Bedrooms no.	2
Kitchens no.	1
Bathrooms no.	2
Building type	Block
Year built	2018
Config	2S+P+6
Floor	3
Balconies no.	1
State	Finished
Elevator	Yes
Parking inside	1

Amenities

 Equipped kitchen

 Dishwasher

 Furnished

 Air conditioning

Location



Photos

