



Violetta Tudorache

+40 729 005 624

contact@blissimobiliare.ro
(mailto:contact@blissimobiliare.ro)

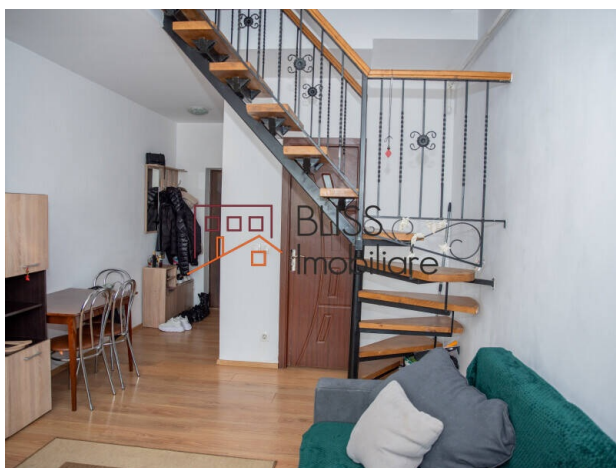
Updated on 16 January 2026

Bright and practical 2-bedroom Duplex with 55sqm usable space

80,000 EUR

Web Reference
#144033

📍 Aparatorii Patriei Bucuresti, Bucharest



<https://www.blissimobiliare.ro/index.php/en/apartment-2-bedrooms-for-sale-berceni-popesti-leordeni-bucharest-144033> (<https://www.blissimobiliare.ro/index.php/en/apartment-2-bedrooms-for-sale-berceni-popesti-leordeni-bucharest-144033>)

Description

This 2-bedroom apartment is a cozy modern retreat in the Aparatorii Patriei area, a place where the rhythm of the city blends harmoniously with the calm of a residential neighborhood. Situated within a young, growing community, the apartment offers both an intimate living space and the chance to be part of an area that's rapidly expanding.

Situated in one of Bucharest's the most sought after residential areas

From the moment you step inside, you feel that the home is thoughtfully designed for everyday comfort, but also for those relaxed moments spent with family or friends. The living room is bright and welcoming, and the layout allows each room to feel balanced, warm, and easy to make your own.





One of the apartment's strongest advantages is the location itself. Aparatorii Patriei is evolving quickly, becoming a true urban extension of the southern part of Bucharest, offering an excellent balance between price and quality of life. Transport connections are convenient, with easy access to public transit and direct routes to the city's main arteries.

Life here unfolds in a pleasant rhythm: you have modern amenities, shops, schools, and green areas nearby, while also enjoying the privacy and calm of a community that continues to grow. It's an ideal choice for families, first-time buyers, or anyone looking for a home that offers both urban comfort and the peace of a more relaxed neighborhood.

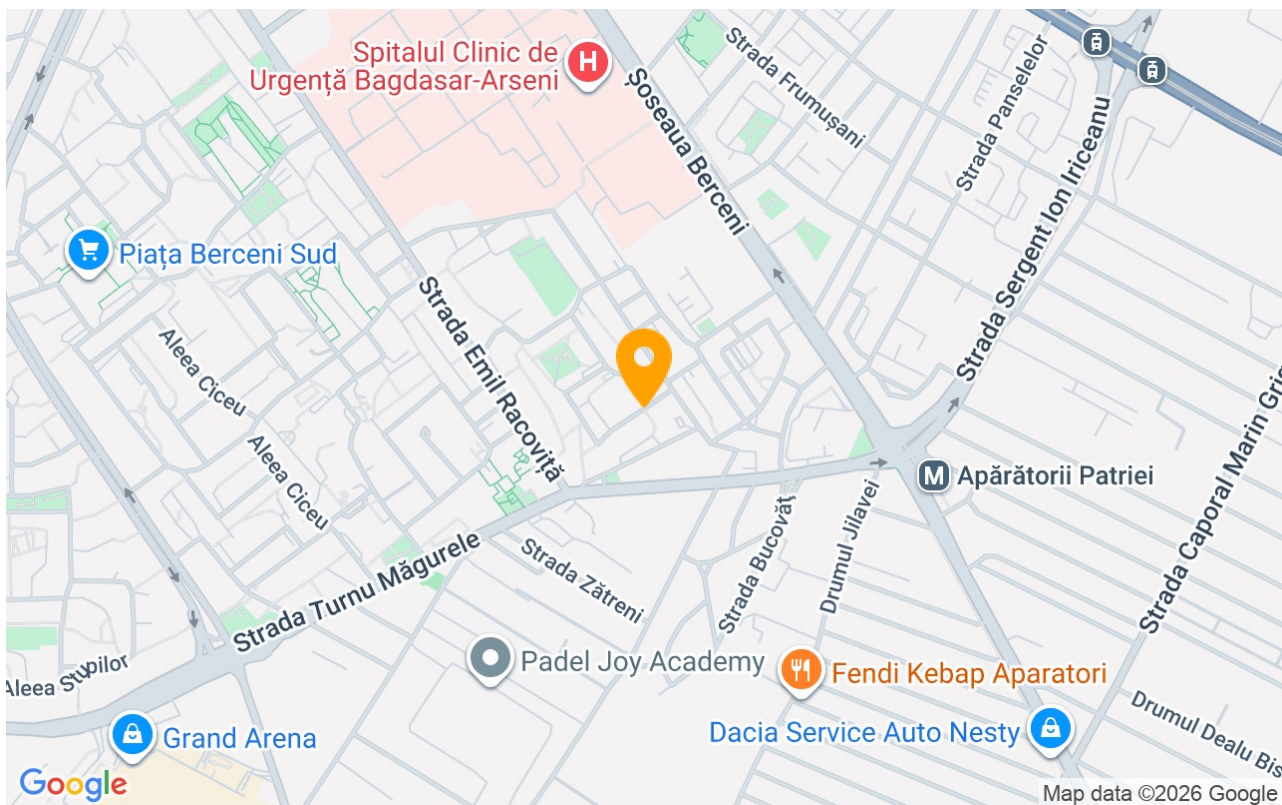
Property details

Rooms no.	3
Useable surface	56m²
Constructed surface	60m²
Apartment type	Apartment
Type of rooms	Independent
Bedrooms no.	2
Kitchens no.	1
Bathrooms no.	1
Toilets no.	1
Building type	Block
Year built	1972
Config	P+4+M
Floor	4
State	Finished
Elevator	No

Amenities

-  Equipped kitchen
-  Furnished
-  City heating
-  Air conditioning

Location



Photos

