



Violetta Tudorache

+40 729 005 624

contact@blissimobiliare.ro
(mailto:contact@blissimobiliare.ro)

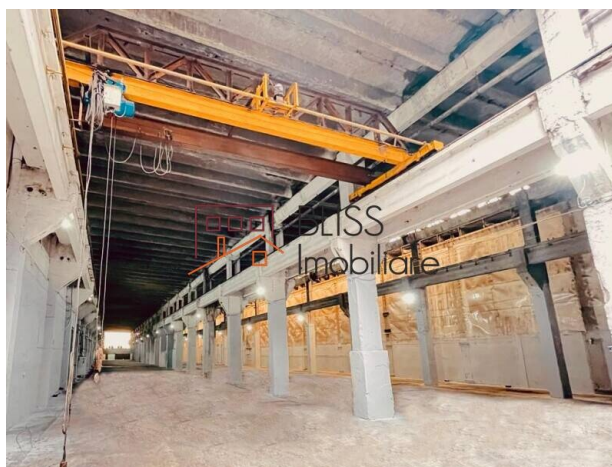
Updated on 9 December 2025

Warehouse/Industrial

Progresul, Bucharest / Ilfov

1,875 EUR/ month

Web Reference
#143573



<https://www.blissimobiliare.ro/index.php/en/industrial-logistics-for-rent-progresul-bucharest-ilfov-143573> (<https://www.blissimobiliare.ro/index.php/en/industrial-logistics-for-rent-progresul-bucharest-ilfov-143573>)

Description

500 sqm retail / industrial space - Ground floor, Șoseaua Giurgiului, Jilava

Ideal for showroom, warehouse, offices, or light industrial use

This retail / industrial property is located on Șoseaua Giurgiului in Jilava, a developing commercial area with excellent access to Bucharest, the Ring Road, and DN5.

Its strategic location ensures high street visibility and convenient access for both clients and delivery vehicles.

The 500 sqm ground floor space is part of a recently renovated building with a modern blue façade, large windows, separate pedestrian access, and a wide industrial gate suitable for vans and trucks.

The layout includes open areas that can be customized for showroom, office, or warehouse use, with the option to create private office sections or small production zones.

The front courtyard allows on-site parking and loading/unloading operations.

Key features:

- Total area: 500 sqm (ground floor)

- Modern, freshly renovated building
- Dual access – pedestrian and industrial
- Open layout suitable for multiple uses
- Private restroom and individual utilities
- On-site parking and supply yard
- Excellent visibility for signage or branding

With its modern façade, functional layout, and excellent transport access, this property is ideal for companies needing a versatile commercial or industrial base in the southern Bucharest – Jilava area.

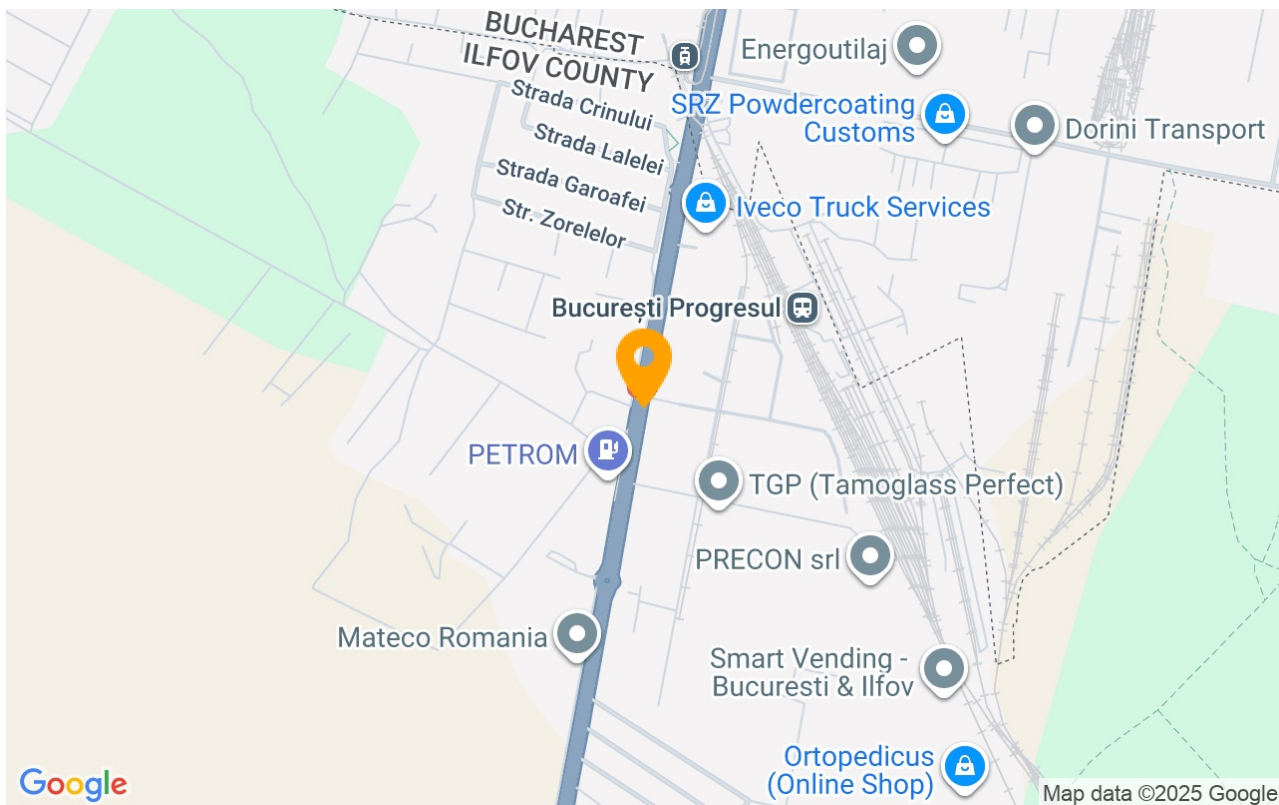
Property details

Constructed surface	500m²
Building type	Block
State	Finished

Amenities

-  Not furnished
-  Building heating

Location



Photos

