



Violetta Tudorache

+40 729 005 624

contact@blissimobiliare.ro
(mailto:contact@blissimobiliare.ro)

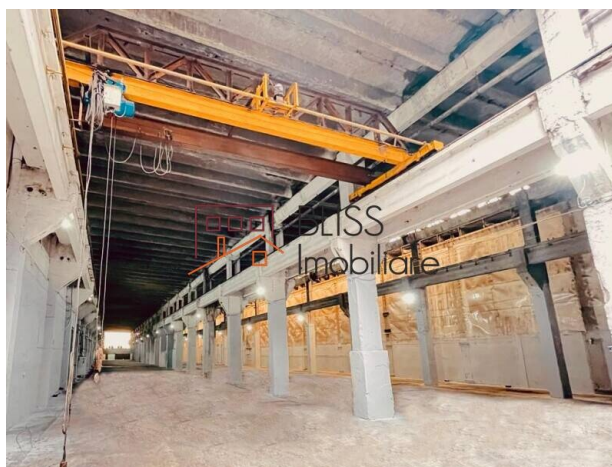
Updated on 11 December 2025

Warehouse/Industrial

Progresul, Bucharest / Ilfov

1,155 EUR/ month

Web Reference
#143572



<https://www.blissimobiliare.ro/index.php/en/industrial-logistics-for-rent-progresul-bucharest-ilfov-143572> (<https://www.blissimobiliare.ro/index.php/en/industrial-logistics-for-rent-progresul-bucharest-ilfov-143572>)

Description

275 sqm retail / industrial space - Ground floor, Șoseaua Giurgiului, Jilava

Ideal for showroom, warehouse, or light production space

This retail / industrial space is located in Jilava, on Șoseaua Giurgiului, one of the main southern access routes into Bucharest.

The area ensures high traffic visibility, easy access for clients and delivery vehicles, and fast connection to the ring road and DN5.

The building has been recently renovated, featuring a modern blue façade, large windows, a metal industrial gate, and separate pedestrian access.

The total ground floor area of 275 sqm offers a bright open-space layout, easily adaptable to retail, office, or storage needs.

Key features:

- Total area: 275 sqm (ground floor)
- Fully renovated building with a modern look
- Dual access – pedestrian and industrial loading gate

- Suitable for showroom, office, warehouse, or small production
- Private restroom and individually metered utilities
- Fresh façade suitable for company signage
- On-site parking and delivery area

With its strategic location, modern façade, and functional configuration, this property is ideal for companies seeking a visible, accessible and versatile commercial or industrial space in the southern Bucharest area.

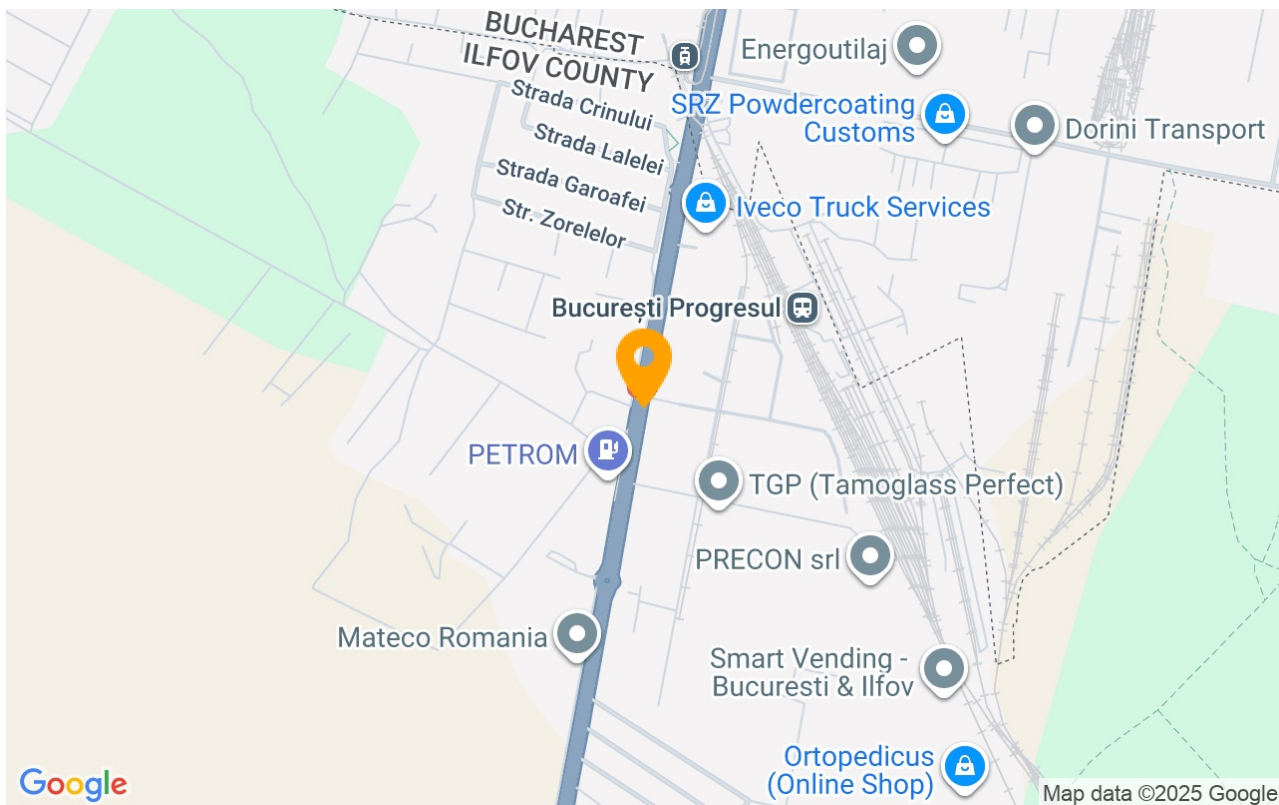
Property details

Constructed surface	275m²
Building type	Block
State	Finished

Amenities

-  Not furnished
-  Building heating

Location



Photos

